

INTRODUCTION

This electronic parts catalog provides serviceable parts information for the Daewoo Motor "**LEGANZA/NUBIRA/LANOS**".

All data and specifications contained in this publication are based on the latest product information available at the time of print. In order to make the best use of this electronic parts catalog, please be sure to read "**the GENERAL INFORMATION**" carefully.

GM Daewoo Auto & Technology
Parts Engineering Team

GENERAL INFORMATION

- I. GENERAL VIEW**
- II. MODEL & OPTION**
- III. TABLE OF COLOR CODE**
- IV. EXPLANATION OF CATALOG COMPOSITION**
- V. CONSTRUCTION OF VEHICLE IDENTIFICATION NUMBER**
- VI. ENGINE IDENTIFICATION NUMBER**
- VII. TRANSAXLE IDENTIFICATION NUMBER**
- VIII. TABLE OF OPTION CODE**
- IX. ABBREVIATIONS**

I. GENERAL VIEW



L E G A N Z A



N U B I R A



L A N O S
4 D O O R N O T C H B A C K



L A N O S
3 D O O R H A T C H B A C K

MODEL & OPTION

LEGANZA

1. MODEL

LEVEL	T/A	ENGINE	REMARKS
I	M / A	2.2 DOHC	
II	A		
III	A		

T/A (TRANSAXLE TYPE)

M	MANUAL TRANSAXLE
A	AUTOMATIC TRANSAXLE
.	COMMON

LEVEL (TRIM LEVEL)

I	SE
II	SX
III	CDX

NOTE : Please be sure to read "EXPLANATION OF CATALOG COMPOSITION" to find out the details on "LEVEL" column.

2. OPTION

CODE	DESCRIPTION	LEVEL			REMARK
		I	II	III	
ML4	4 SPEED AUTOMATIC T/A(AISIN)	O	B	B	
U12	BRAKE T/M SHIFT INTERLOCK	.	B	B	
C54	HEATING MAT-DIRVER	.	O	O	
C58	HEATING MAT-PASSENGER	.	O	O	
UIP	ULTRASONIC, W/CAR ALARM	.	O	O	
CF6	SUN ROOF-POWER	.	O	B	
CRS	ROOM LAMP-FRT, SUN ROOF	.	O	B	
UE1	EQUALIZER	.	O	O	
DSP	DIGITAL SIGNAL PROCESSOR	.	O	O	
UP1	CD CHANGER	.	O	O	

O : OPTION
 B : BASE
 . : NOT APPLIED

NUBIRA

1. MODEL

T/A	BODY	LEVEL
M / A / G / F	4N / 5W	I / II / II

T/A (TRANSAXLE)

CODE	DESCRIPTION
.	Common
M	Manual transaxle
A	Automatic transaxle(All)
G	Automatic transaxle(GMPT)
F	Automatic transaxle(ZF16)

BODY (BODY TYPE)

CODE	DESCRIPTION	CODE	DESCRIPTION
4N	4 Door notchback	.	Not Applied
5W	5 Door station wagon	B	Applied

LEVEL (TRIM LEVEL)

CODE	DESCRIPTION	CODE	DESCRIPTION
I	SE	.	Not Applied
II	SX	S	Standard Equipment
III	CDX	O	Optional Equipment

NOTE : Please be sure to read "EXPLANATION OF CATALOG COMPOSITION" to find out the details on "LEVEL" column.

2. OPTION

CODE	DESCRIPTION	TRIM LEVEL		
		SE	SX	CDX
MM9	4 SPEED AUTOMATIC T/A(ZF16)	O	O	O
ML4	4 SPEED AUTOMATIC T/A(GMPT)	O	O	O
PG4	ALLOY WHEEL,5.5Jx14	O	O	B
JL9	ANTILOCK BRAKE SYSTEM	O	O	B
C60	AIR CONDITIONER	O	B	B
C59	UNCOMPLETED A/CONDITIONER	O	O	.
C15	AIR CONDITIONING-FULL ATC	.	.	O
W6R	SEAT COVERING-LEATHER	O	O	O
K30	CRUISE CONTROL	.	O	B
CF6	SUN ROOF, POWER	O	O	O
UN6	R/CASSETTE(LOGIC),25Wx4CH	O	O	O
UP1	CD CHANGER	.	.	O
W8V	CD PLAYER	O	O	O
CAL	CAR ALARM SYSTEM	O	B	B

O : OPTION

B : BASE

. : NOT APPLIED

LANOS

1. MODEL

T/A	BODY	LEVEL
M / A	4N / 3H	I / II / III

T/A (TRANSAXLE TYPE)

M	MANUAL
A	AUTOMATIC
.	COMMON

BODY (BODY TYPE)

4N	4DOOR NOTCHBACK
3H	3DOOR HATCHBACK

LEVEL (TRIM LEVEL)

I	S
II	SE
III	SX

NOTE : Please be sure to read "EXPLANATION OF CATALOG COMPOSITION" to find out the details on "LEVEL" column.

2. OPTION

CODE	DESCRIPTION	BODY		LEVEL			REMARKS
		4N	3H	I	II	III	
ML4	4 SPEED AUTOMATIC T/A	B	B	O	O	O	
C60	AIR CONDITIONER	B	B	O	O	B	
CF6	SUN ROOF,POWER	B	B	.	.	O	
W8V	CD PLAYER	B	B	.	O	B	

O : OPTION
 B : BASE
 . : NOT APPLIED

¥2. TABLE OF COLOR CODE

LEGANZA

When ordering the color parts, the color code should be quoted.

EXTERIOR COLOR		INTERIOR COLOR
CODE	DESCRIPTION	
11U	GALAXY WHITE(S)	GREY
42U	DEEP BLUISH GREEN(M1)	BEIGE
62U	KHAKI BEIGE(M2)	BEIGE
74U	SPINEL RED(M1)	BEIGE
83L	GRANADA BLACK(M1)	GREY
93U	OLIVE SILVER(M2)	BEIGE

NUBIRA

When ordering the color parts, the color code should be quoted.

EXTERIOR COLOR		INTERIOR COLOR	REMARKS
CODE	DESCRIPTION		
11U	GALAXY WHITE	BEIGE	
20U	PACIFIC BLUE	GREY	
24U	REGATTA BLUE	GREY	
40U	SHERWOOD GREEN	BEIGE	
42U	DEEP BLUISH GREEN	GREY	
60U	BRIGHTON GOLD	BEIGE	
61U	MONSTONE BEIGE	GREY	
70U	RED ROCK	BEIGE	
73L	SUPER RED	GREY	
92U	POLY SILVER	GREY	

LANOS

When ordering the color parts, the color code should be quoted.

EXTERIOR COLOR		INTERIOR COLOR	REMARKS
CODE	DESCRIPTION		
11U	GALAXY WHITE	GREY	
21U	AZURITE BLUE	GREY	
42U	DEEP BLUISH GREEN	GREY	
74U	SPINEL RED	GREY	
92U	POLY SILVER	GREY	

IV. EXPLANATION OF CATALOG COMPOSITION

1111 ENGINE UNIT(SOHC)

I T C	KEY NO.		PART NAME											O P T I O N	R E M A R K S		
	P A R T N O.	C H G	MODEL					L / R	Q T Y	P N C	P / C O D E	EFFECTIVE POINT					
			B O D Y		L E V E L							V I N 1				V I N 2	
			4 N	3 H								F R O M	T O			F R O M	T O
	1	ENGINE A															
<input type="checkbox"/>	96184185	M.	B	B	S	O	.		1	100001	BJ						-XCA
<input type="checkbox"/>	96352330	M.	B	B	A	A	.		1	100001	B6						&XCA
	96350294	M.	B	B	O	S	S		1	100001	HJ						-XCA
<input type="checkbox"/>	96352335	M.	B	B	A	A	A		1	100001	H6						&XCA
	96350292	A.	B	B	O	O	O		1	100001	HL						-XCA
	96352336	A.	B	B	A	A	A		1	100001	H7						&XCA
	2	SHACKLE-ENG TRANSPORT															
<input type="checkbox"/>	90076951	..	B	B	S	S	S		1	11C021							
	3	BOLT															
<input type="checkbox"/>	02865535	..	B	B	S	S	S		1	11C021							M8X22

** EXPLANATION OF CATALOG COMPOSITION

GROUP NO.

GROUP NAME

PART NAME

KEY NUMBER(FIG.NO)

PART NUMBER

ITC (Interchangeability CODE)

MODEL

OPTION

L/R

QT'Y (Quantity)

EFFECTIVE POINT

REMARKS

PART IDENTIFICATON CODE

CHANGE CODE

PNC (Part Number Control Code)

1. GROUP NO.

The 1st one digit indicates " MAIN GROUP NO." and next three digits indicate " SUB GROUP NO."

2. SUB GROUP NAME

This indicates the name of sub group within the main group.

3. PART NAME

Part names are shown in multi-language (example)
(E).....English

4. KEY NUMBER

Key number corresponds with the reference number on the illustration. Key number is not always sequenced.

5. PART NUMBER

The number is assigned to each part.

6. ITC(INTERCHANGEABILITY CODE)

When any part number has been changed due to design modification, this indicates the interchangeability between two part numbers.

*Interchangeability symbols

Y : The old and new parts are interchangeable.

N : The old and new parts are not mutually interchangeable.

O : The new part can be used for the old part but the reverse is not possible.

7. MODEL

This column indicates Engine Type, Transaxle Type,Body Type, Trim Level.

T/A (TRANSAXLE)

CODE	DESCRIPTION
.	Common
M	Manual transaxle
A	Automatic transaxle(All)
G	Automatic transaxle(GMPT)
F	Automatic transaxle(ZF16)

ENG (ENGINE)

CODE	DESCRIPTION
.	Common
Y	1.5 SOHC
6	1.6 DOHC

BODY (BODY TYPE)

CODE	DESCRIPTION	CODE	DESCRIPTION
4N	4 Door notchback	.	Not Applied
3H	3 Door hatchback	B	Applied
5W	5 Door station wagon		

LEVEL (TRIM LEVEL)

VEHICLE NAME	DESCRIPTION	
LANOS	I / II / III	S / SE / SX
NUBIRA	I / II / III	SE / SX / CDX
LEGANZA	I / II / III	SE / SX / CDX

"LEVEL" column indicates the expression of applicable trim level.

S : Standard equipment.

O : Option equipment.

A : Available equipment for the special package according to the area regulation.

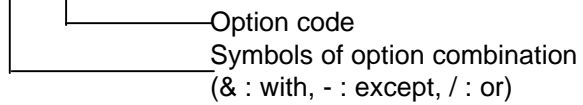
. : Not applied

8. OPTION

This column indicates option code.

Refer to "VI. TABLE OF OPTION CODE "

ex) ○ ○ ○ ○



9. L/R

This column indicates mounting position of part.

L : Left hand side

R : Right hand side

10. Q'TY

This column indicates the quantity required per sub-group.

The quantity is normally shown by numeric or by symbol as bellow.

A : As required quantity.

11. EFFECTIVE POINT

This column indicates the " VIN " in production.

12. REMARKS

Supplementary or reference information is given in this column.

Specification, Use, Type, Applicable Country, etc.

13. PART IDENTIFICATION CODE

This column indicates part identification code that is marked with two characters. Part identification code will help you in discrimination the parts easily. But, all parts will not always carry the part identification code

14. CHG (CHANGE)

This column indicates code of the changed parts.

CR : Correction

AD : Addition

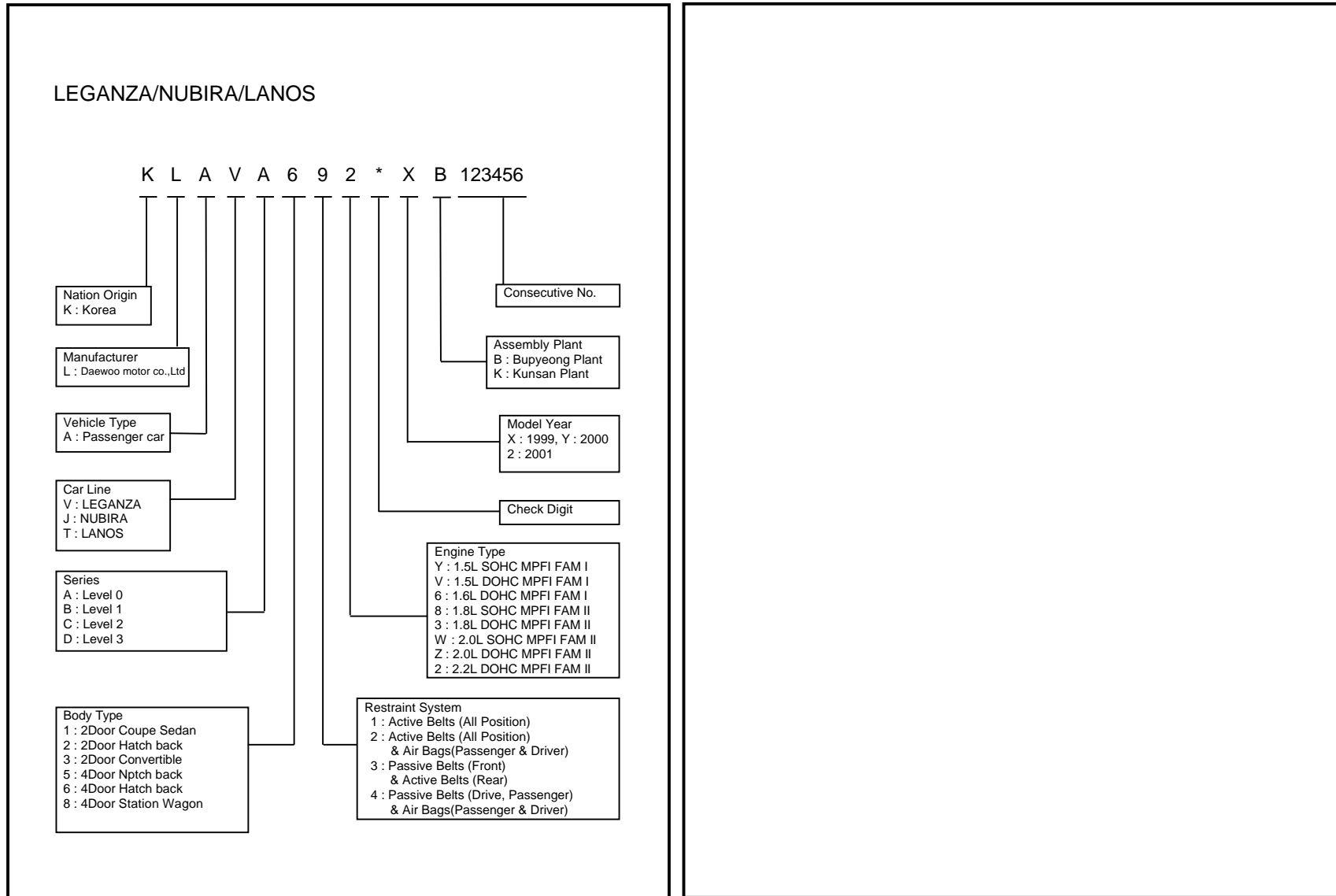
DL : Deletion

MD : Modification

15. PNC (Parts Number Control Code)

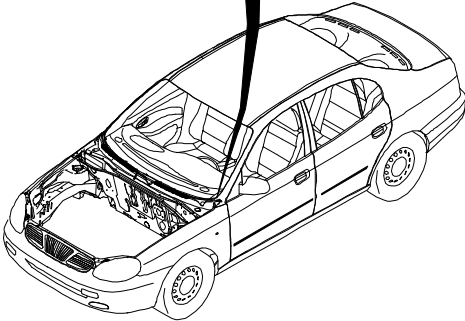
This column indicates the code of parts number control.

₩. CONSTRUCTION OF VEHICLE IDENTIFICATION NUMBER

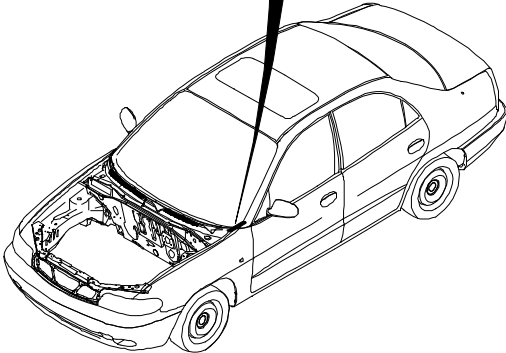
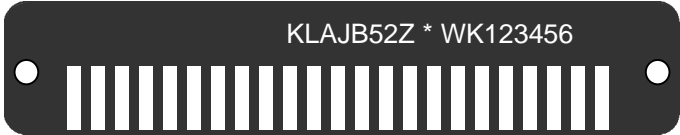


LOCATION OF VEHICLE IDENTIFICATION NUMBER

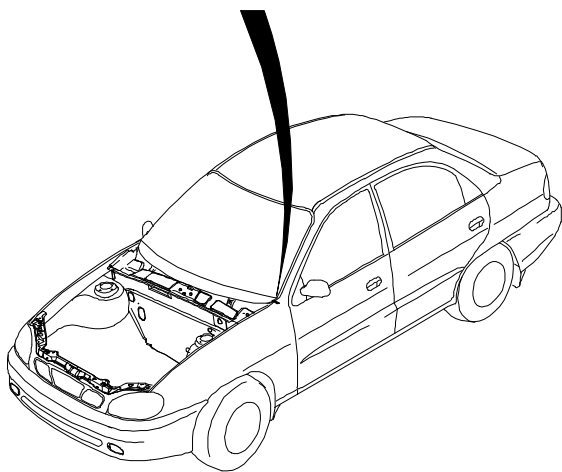
LEGANZA



NUBIRA



LANOS



VI. ENGINE IDENTIFICATION NUMBER

FAMILY [I] TYPE

A 15 D M N 123456 B

Example)

- 1.3 SOHC
 - A13SMS 123456B
- 1.5 SOHC
 - A15SMS 123456B
- 1.5 DOHC
 - A15DMS 123456B
- 1.6 DOHC
 - A16DMS 123456B

Engine License

A : IN LINE
V : V TYPE

Engine

Displacement

13 : 1.3L

15 : 1.5L

16 : 1.6L

Cam Mechanism

D : DOHC

S : SOHC

Injection Type

E : MPI

L : LPG

Compress Ratio

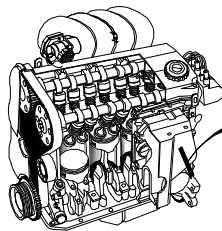
N : 9.0<N<9.5

S : 9.5<S<10.0

Serial No.

Plant Location

B : BUPYONG



A16DMN 123456B

FAMILY [II] TYPE

C 20 S E D 123456

Example)

- 1.8
 - 2.0 LPG
 - C20NL 123456
 - 2.0 DOHC
 - C20SED 123456

Exhaust Emission

Limit

C : Domestic,
Others

X : Europe

T : North America

Engine

Displacement

18 : 1.8L

20 : 2.0L

22 : 2.2L

Cam Mechanism

N : SOHC

S : DOHC

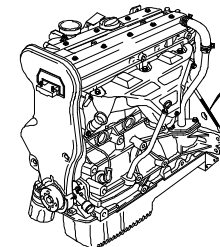
Injection Type

E : MPI

L : LPG

Plant Location

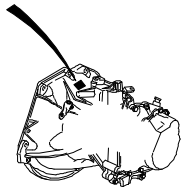
D : Daewoo Motor
co., LTD



C20SED 123456

VII. TRANSAXLE IDENTIFICATION NUMBER

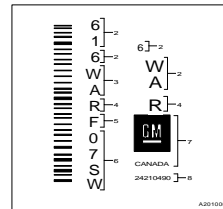
MANUAL TRANSAXLE



Serial No.

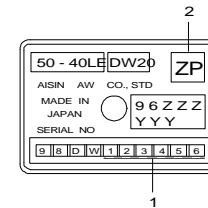
PART IDENTIFICATION CODE

AUTOMATIC TRANSAXLE TYPE [GMPT]



- 1 Assembly plant (Windsor, Canada)
- 2 Model Year (1996)
- 3 Broadcast Code
- 4 Model Name (4T40E)
- 5 Update Level
- 6 Sequential Number
- 7 Manufacturer
- 8 Part Number

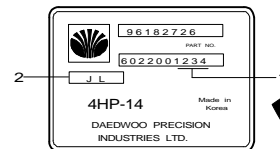
AUTOMATIC TRANSAXLE TYPE [AISIN]



Serial No.

PART IDENTIFICATION CODE

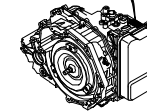
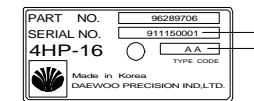
AUTOMATIC TRANSAXLE TYPE [ZF14]



Serial No.

PART IDENTIFICATION CODE

AUTOMATIC TRANSAXLE TYPE [ZF16]



Serial No.

PART IDENTIFICATION CODE

VI. TABLE OF OPTION CODE

CODE	DESCRIPTION	CODE	DESCRIPTION	CODE	DESCRIPTION	CODE	DESCRIPTION
&	TOGETHER WITH	C15	AIR CONDITIONER(ATC)	FQ4	AXLE RATIO-3.72	T97	FOG LAMP-INTEGRATED IN BUMPER
-	EXCEPT	C20	VARIABLE SPEED WIPER	FW5	FLUSH WHEEL COVER,14"	TA0	CHILD SEAT TETHER ANCHORAGE
/	OR	C25	WASHER & WIPER-BACK WINDOW	G39	AXLE RATIO-3.944	TCP	TRAILER PACKAGE(DEALER OPTION)
11U	GALAXY WHITE - SOLID	C34	AIR FILTER	G41	AXLE RATIO-4.176	TD2	TRIM-DOOR,DLX
20U	PACIFIC BLUE- MICA	C46	HEATER	GS4	AXLE RATIO-3.545	TDL	TRIM-DOOR,LEATHER
24U	REGATTA BLUE- MICA	C50	REAR WINDOW DEFFOGER-W/TIMER	GS7	AXLE RATIO-3.979	TLD	TRUNK LID HANDLE-CHROME COATING
40U	SHERWOOD GREEN-MICA	C54	HEATING MAT, DRIVER	JB6	BRAKE DISC	TN6	BATTERY-55AH
42U	DEEP BLUISH GREEN-MICA	C55	REAR WINDOW	JL9	ANTI- LOCK BREAK SYSTEM	TNH	BATTERY-55AH,HIGH
60I	BEIGE-INTERIOR	C58	HEATING MAT, PASSENGER	JTC	TRACTION CONTROL SYSTEM	U14	DIGITAL CLOCK
60U	BRIGHTON GOLD-METALLIC	C60	AIR CONDITIONER	K30	CRUISE CONTROL	U47	NEUTRAL STARTER-CLUTCH
61I	BEIGE-INTERIOR	C95	LAMP-ROOM,CENTER	L84	1.8 DOHC ENGINE(M.P.I)	U67	DAY TIME RUNNING LIGHT
61U	MOONSTONE BEIGE-METALLIC	C99	LAMP-ROOM,FRONT	L88	2.0 DOHC ENGINE(M.P.I)	U77	ANTENNA-BLACK MAST
70U	RED ROCK- MICA	CAL	CAR ALARM & ANTI-THEFT	L90	2.2 DOHC ENGINE(M.P.I)	U85	DIGITAL CLOCK W/OUTSIDE
73L	SUPER RED- SOLID	CF6	SUN ROOF,POWER	M89	TRANSAXLE-M/T 5 SPEED(CLOSE	U93	SPEAKER-6EA
80I	INTERIOR COLOR BLACK	CN5	CANISTER-1.85	ML9	TRANSAXLE-AUTO 4 SPEED(ZF T/A)	UB0	AUDIBLE WARNING CHIME
82I	INTERIOR COLOR GRAY	CRS	LAMP-ROOM,FRONT(SUNROOF)	N33	TILTABLE STEERING COLUMN	UC0	SPEEDOMETER(KILOMETER/H)
85I	GREY-INTERIOR	D33	MIRROR-REMOTE CONTROL,DRIVER	NET	NET-LUGGAGE	UC1	SPEEDOMETER(MILE/H)
92U	POLY SILVER-METALLIC	D39	MIRROR-REMOTE	NM1	ON BOARD REFUELING VAPOR RECO	UE1	EQUALIZER
A30	NON POWER-WINDOW	D40	MIRROR-HEATING FUNCTION	NN8	EMISSION-TLEV	UIP	ULTRASONIC INTERIOR PROTECTION
A31	POWER OPERATING WINDOW(FR+RR)	DD4	MIRROR-ELECTRIC,PASSENGER SIDE	NNC	EMISSION-LEV	UNB	RADIO BLANK (with W/HARNESS)
A32	POWER OPERATING WINDOW(FR)	DHC	CHROME COATING INSIDE DOOR	NP5	STEERING WHEEL-LEATHER COVER	UP1	CD CHANGER
A66	WINDOW-POWER(FRT&RR), 1TOUCH	DM0	MIRROR-MANUAL FOLDING,	P11	FLUSH WHEEL COVER-14"	US5	SPEAKER,TWEETER
AG1	POWER SEAT, DRIVER SIDE-LEATHER	DM6	MIRROR-MANUAL FOLDING, MANUAL	P21	FLUSH WHEEL COVER,14"	UT4	ANTENNA-MANUAL(REAR)
AG4	SEAT-LH,HEIGHT ADJUST,MANUAL	DM7	MIRROR-MANUAL FOLDING,	PG1	WHEEL 6. 0JX15(STEEL)	UT5	ANTENNA-POWER(REAR)
AGD	HEIGHT ADJUSTABLE, MANUAL DUAL	DM8	MIRROR-MOLDED COLOR	PG4	WHEEL 5.1/2JX14(ALLOY)	UT8	ANTENNA-ROOF
AJ7	AIR BAG SYSTEM-PASSENGER	DM9	MIRROR-BODY COLOR	PG9	WHEEL 6. 0JX15(ALLOY)	UXA	SPEED SENSITIVE POWER STEERING
AP1	ASSIST GRIP-3EA	DP0	MIRROR-MANUAL FOLDING,	PX8	WHEEL 5.1/2JX14(STEEL)	UZ9	KEY INTERLOCK SYSTEM
AP5	SEAT-REAR,ARM REST W/O DEPOSIT	DSL	SUNSHADE-W/MIRROR ILLUMINATION	QAF	TIRE-185/65 R 14	VT8	TWO TONE COLOR
APP	BELT-SEAT,PRETENSIONER,FRT	DSP	EQUALIZER-DIGITAL SIGNAL	QQT	TIRE-SPARE,TEMPORARY	W3S	LETTERING - SX
AQ3	FRONT SEAT-RECLINING(DIAL) &	FAC	AUTO TEMPERATURE DISPLAY("C)	QRF	TIRE 205/60 R15	W3T	LETTERING - CDX
AS7	BELT-FRT,3 POINT ELR,HYBRID	FAF	AUTO TEMPERATURE DISPLAY("F)	QRX	TIRE 195/70 R14	W4V	LETTERING - SE
ATP	ANTI-THEFT WIRING PROVISION	FAW	WARNING TRIANGLE(DEALER OPTION)	QTL	TIRE-195/55 R 15	W6C	TRIM-CLOTH,DLX
AU3	ELECTRIC DOOR LOCKING	FC0	FUEL CUT OFF SWITCH	RC2	REMOTE CONTROL S/W-STRG	W6E	TRIM-CLOTH,DLX
AYT	HEADREST-UP/DOWN & TILT	FE2	ELECTRONIC CONTROL SUSPENSION	RW1	RADIO WAVE-1st TYPE	W6Q	TRIM-LEATHER
B11	SEAT BACK POCKET	FL1	HEAD LAMP-ECE TYPE,LHD	SKL	LEATHER T/M KNOB(A/T)	W6R	SPORTY-FABRIC
B15	ROCKER MOLDING	FL2	HEAD LAMP-SAE,LHD	T01	LAMP-LICENSE PLATE,ECE	W6S	SPORTY-LEATHER
B58	FLOOR CARPET-DELUXE	FL3	HEAD LAMP-ECE TYPE,RHD	T11	LICENSE PLATE,SAE	W6W	TRIM-CLOTH,STD
B59	FLOOR MAT HOOK	FL5	SIDE INDICATOR LAMP,FRT,RR	T26	LAMP-TURN SIGNAL,ECE	W8K	CASSETTE(25WX4CH) & COMPACT DISC
BS2	BODY SIDE MOLDING	FL7	LAMP-REAR COMB,SAE	T45	REAR SPOILER(BLACK)	W8V	CD PLAYER
BY9	HEADLINING-FORMED CLOTH	FL8	LAMP-REAR COMB,ECE	T96	LAMP-FRONT FOG	W9M	WHEEL-BLACK

CODE	DESCRIPTION	CODE	DESCRIPTION	CODE	DESCRIPTION	CODE	DESCRIPTION
WGM	METALLIC GRAIN						
WGR	WOOD GRAIN TRIM						
WGS	METALLIC GRAIN						
XA1	SOUTH AFRICA-MANDATORY						
XAF	AFRICA-MANDATORY						
XAL	ALGERIA-MANDATORY						
XCE	CHILE-MANDATORY						
XCH	CHINA-MANDATORY						
XFE	U.S.A-MANDATORY						
XFR	FRANCE-MANDATORY						
XJR	JORDAN-MANDATORY						
XLP	STEERING WHEEL COVER-LEATHER						
XM2	LUMBAR SUPPORT-DRIVER SEAT						
XM3	LUMBAR SUPPORT-PASSENGER SEAT						
XST	SPORTY PACKAGE						
XTK	TURKEY-MANDATORY						
XTW	TAIWAN-MANDATORY						
XUK	UK-MANDATORY						
XYM	YEMEN-MANDATORY						

¶. ABBREVIATIONS

CODE	DESCRIPTION	CODE	DESCRIPTION	CODE	DESCRIPTION
1ST	FIRST	EXPN	EXPANSION	RAD	RADIATOR
2ND	SECOND	EXTN	EXTENSION	RECL	RECLINER,-ING
3RD	THIRD	F/PNL	FLOOR PANEL	REF	REFRIGERANT
A	ASSEMBLY	FDG	FEEDING	REINF	REINFORCEMENT
A/C	AIR CONDITIONER,-ING	FLR	FLOOR	REV	REVERSE
A/T	AUTO TRANSMISSION	FRT	FRONT	RKE	REMOTE KEY(ENTRY SYSTEM)
ABS	ANTI LOCK BRAKE SYSTEM	FWD	FORWARD	RR	REAR
ACCEL	ACCELERATOR	G/S	GEAR SHIFT	RTN	RETURN
AL	ALUMINIUM	HARN	HARNESS	S/ABS	SHOCK ABSORBER
ATAS	ANTI THEFT ALARM SYSTEM	HYD	HYDRAULIC	S/BACK	SEAT BACK
ATC	AUTO TEMPERATURE CONTROL	I/MANIF	INTAKE MANIFOLD	S/BELT	SEAT BELT
AUX	AUXILIARY	I/P	INSTRUMENT PANEL	S/COL	STEERING COLUMN
BTSI	BRAKE TRANSMISSION SHIFT INTERLOCK	I/S	INSIDE	S/W	SWITCH
C/G	CROSS GROOVE	IACV	IDLE AIR CONTROL VALVE	SDM	SENSING & DIAGNOSTIC MODULE
C/MBR	CROSS MEMBER	IGN	IGNITION	SECD	SECONDARY
C/V	CONSTANT VELOCITY	INCL	INCLUDING	SHF	SHAFT
CATAL CONV	CATALYTIC CONVERTER	INL	INLET	SIR	SUPPLEMENTAL INFLATE RESTRAINT
CD	COMPACT DISC	INR	INNER	SOL	SOLENOID
CLU	CLUTCH	INST	INSTRUMENT	STD	STANDARD
CM/SHF	CAM SHAFT	INT	INTAKE	STRG	STEERING
CMPR	COMPRESSOR,-SION	INTER	INTERMEDIATE	SUCT	SUCTION
CNSL	CONSOLE	L/COMPT	LOAD COMPARTMENT	SUPT	SUPPORT,-ING
COMB	COMBINATION	L/PLATE	LICENSE PLATE	SYN	SYNCHRONIZER
COMPL	COMPLETE	LONGI	LONGITUDINAL	T/A	TRANSAXLE
COMPT	COMPARTMENT	LWR	LOWER	T/BODY	THROTTLE BODY
CONN	CONNECTING,-TOR,-NECT	M/T	MANUAL TRANSMISSION	T/GATE	TAIL GATE
CONT	CONTROL	MANIF	MANIFOLD	T/LID	TRUNK LID
CONV	CONVERTER	MAP	MANIFOLD AIR PRESSURE	T/M	TRANSMISSION
CPS	CRANK POSITION SENSOR	MAT	MANIFOLD AIR TEMPERATURE	T/P	TRI POT
CR/SHF	CRANK SHAFT	MBR	MEMBER	T/SIG	TURN SIGNAL
CTR	CENTER,-RAL	MOD	MODULE	TCC	TORQUE CONVERTER CLUTCH
CUSH	CUSHION	MT	MOUNTED,-ING	TCM	TRANSMISSION CONTROL MODULE
CYL	CYLINDER	NEU	NEUTRAL	TEMP	TEMPERATURE
DIFF	DIFFERENTIAL	NSBU	NEUTRAL START BRAKE UNIT	THER	THERMAL
DIR	DIRECT,-TION	O/S	OUTSIDE,OVERSIZE	TILT	TILTABLE
DIS	DIRECT IGNITION SYSTEM	OBD	ON BOARD DIAGNOSTIC	TRK	TRUNK
DISTR	DISTRIBUTOR,-TION	OPG	OPENING	TXV	THERMAL EXPANSION VALVE
DLX	DELUXE	OTLT	OUTLET	U/S	UNDER SIZE
DMP	DAMPING,-PER	OTR	OUTER	UPR	UPPER
DR	DOOR	P/BRAKE	PARKING BRAKE	VENT	VENTILATED,TION,-TOR
DRL	DAY TIME RUNNIN LIGHT	P/STRG	POWER STEERING	VGIS	VARIABLE GAS INDUCTION SYSTEM
E/MANIF	EXHAUST MANIFOLD	P/WDO	POWER WINDOW	W/	WITH
ECM	ELECTRONIC CONTROL MODULE	PARK	PARKING	W/H	WHEEL HOUSE
ECU	ELECTRONIC CONTROL UNIT	PASS	PASSENGER	W/HARNES	WIRING HARNESS
EGR	EXHAUST GAS RECIRCULATION	PCB	PRINTED CIRCUIT BOARD	W/SHIELD	WINDSHIELD
ELEC	ELECTRIC,-CAL	PNL	PANEL	W/STRIP	WEATHER STRIP
ENG	ENGINE	PRIM	PRIMARY	WDO	WINDOW
ENGY	ENERGY	PROTV	PROTECTIVE	W/O	WITHOUT
EXH	EXHAUST	PWR	POWER		