

## INTRODUCTION

This electronic parts catalog provides serviceable parts information for the Daewoo Motor "**LEGANZA/NUBIRA/LANOS**".

All data and specifications contained in this publication are based on the latest product information available at the time of print. In order to make the best use of this electronic parts catalog, please be sure to read "**the GENERAL INFORMATION**" carefully.

**GM Daewoo Auto & Technology**  
Parts Engineering Team

## **GENERAL INFORMATION**

- I. GENERAL VIEW**
- II. MODEL & OPTION**
- III. TABLE OF COLOR CODE**
- IV. EXPLANATION OF CATALOG COMPOSITION**
- V. CONSTRUCTION OF VEHICLE IDENTIFICATION NUMBER**
- VI. ENGINE IDENTIFICATION NUMBER**
- VII. TRANSAXLE IDENTIFICATION NUMBER**
- VIII. TABLE OF OPTION CODE**
- IX. ABBREVIATIONS**

## I. GENERAL VIEW



L E G A N Z A



N U B I R A



L A N O S  
4 D O O R N O T C H B A C K



L A N O S  
3 D O O R H A T C H B A C K

## II. MODEL & OPTION

### LEGANZA

#### 1. MODEL

COUNTRY		LEVEL	T / A	ENGINE
<b>O T H E R</b>	PUERTO RICO ,GUME ,SAMOA	SE	M/T or AISIN A/T	2.0/2.2 DOHC
		SX		
		CDX	AISIN A/T	
<b>C A N</b>	CANADA	SE	M/T or AISIN A/T	
		SX		
		CDX	AISIN A/T	

T/A(TRANSAXLE)TYPE

- M : MANUAL T/A
- A : AUTOMATIC T/A(4-SPD)
- . : COMMON

NOTE : Please be sure to read "the EXPLANATION OF CATALOG COMPOSITION"  
to find out the details on "the LEVEL COLUMN"

#### 2. OPTION

CODE	DESCRIPTION	MODEL(LEVEL)						REMARK
		OTR			CAN			
		SE	SX	CDX	SE	SX	CDX	
ML4	AUTOMATIC T/M-4 SPD(AISIN A/T)	O	O	B	O	O	B	
U12	BRAKE T/M SHIFT INTERLOCK	O	B	B	O	B	B	
C54	HEATING MAT-DRIVER	.	O	O	.	O	B	
C58	HEATING MAT-PASSENGER	.	O	O	.	O	B	
JL9	ABS	O	O	B	.	O	B	
JTC	ABS+TCS	.	.	O	.	.	O	
AG1	POWER SEAT,DRIVER	.	O	B	.	O	B	
K30	CRUISE CONTROL	.	O	B	B	B	B	
UIP	ULTRASONIC WITH CAR ALARM	.	O	O	O	O	O	
CF6	SUN ROOF-POWER	.	O	O	O	O	O	
CRS	ROOM LAMP-FRT,SUN ROOF	.	O	O	O	O	O	
W8K	COMPACT DISK	.	O	B	O	O	O	
UE1	EQUALIZER	.	O	O	.	.	.	
DSP	DIGITAL SIGNAL PROCESSOR	.	O	O	O	O	O	
UP1	CD CHANGER	.	O	B	O	O	O	
PG9	ALLOY WHEEL	O	O	B	O	O	B	

- O : OPTION
- B : BASE
- . : NOT APPLIED

# NUBIRA

## 1. MODEL

T/A	BODY	LEVEL
M / A / G / F	4N / 5W	I / II / II

### T/A (TRANSAXLE)

CODE	DESCRIPTION
.	Common
M	Manual transaxle
A	Automatic transaxle(All)
G	Automatic transaxle(GMPT)
F	Automatic transaxle(ZF16)

### BODY (BODY TYPE)

CODE	DESCRIPTION	CODE	DESCRIPTION
4N	4 Door notchback	.	Not Applied
5W	5 Door station wagon	B	Applied

### LEVEL (TRIM LEVEL)

CODE	DESCRIPTION	CODE	DESCRIPTION
I	SE	.	Not Applied
II	SX	S	Standard Equipment
III	CDX	O	Optional Equipment

NOTE : Please be sure to read "EXPLANATION OF CATALOG COMPOSITION" to find out the details on "LEVEL" column.

## 2. OPTION

CODE	DESCRIPTION	TRIM LEVEL		
		SE	SX	CDX
MM9	4 SPEED AUTOMATIC T/A(ZF16)	O	O	O
ML4	4 SPEED AUTOMATIC T/A(GMPT)	O	O	O
PG4	ALLOY WHEEL,5.5Jx14	O	O	B
JL9	ANTILOCK BRAKE SYSTEM	O	O	B
C60	AIR CONDITIONER	O	B	B
C59	UNCOMPLETED A/CONDITIONER	O	O	.
C15	AIR CONDITIONING-FULL ATC	.	.	O
W6R	SEAT COVERING-LEATHER	O	O	O
K30	CRUISE CONTROL	.	O	B
CF6	SUN ROOF, POWER	O	O	O
UN6	R/CASSETTE(LOGIC),25Wx4CH	O	O	O
UP1	CD CHANGER	.	.	O
W8V	CD PLAYER	O	O	O
CAL	CAR ALARM SYSTEM	O	B	B

O : OPTION

B : BASE

. : NOT APPLIED

# LANOS

## 1. MODEL

ENGINE	T/A	BODY	LEVEL
Y / 6	M / A	4N / 3H	I / II / III

### ENG (ENGINE TYPE)

Y	1.5 SOHC
6	1.6 DOHC
.	COMMON

### T/A (TRANSAXLE TYPE)

M	MANUAL
A	AUTOMATIC
.	COMMON

### BODY (BODY TYPE)

4N	4DOOR NOTCHBACK
3H	3DOOR HATCHBACK

### LEVEL (TRIM LEVEL)

I	S
II	SE
III	SX
.	NOT APPLIED

NOTE : Please be sure to read "EXPLANATION OF CATALOG COMPOSITION" to find out the details on "LEVEL" column.

## 2. OPTION

CODE	DESCRIPTION	BODY		LEVEL			REMARKS
		4N	3H	I	II	III	
ML4	4 SPEED AUTOMATIC T/A	B	B	O	O	O	
JL9	ANTILOCK BRAKE SYSTEM	B	B	O	O	O	@1
		B	B	.	O	O	@2
N40	POWER STEERING	.	B	O	B	B	@4
C60	AIR CONDITIONER	.	B	O	B	B	@3
A32	WINDOW-POWER,FRONT	.	B	.	B	O	@2
A31	WINDOW-POWER,FRONT&REAR	B	.	.	.	O	@2
CF6	SUN ROOF,POWER	B	B	O	O	O	@4
		B	B	.	O	O	@2
W8V	CD PLAYER	B	B	.	O	B	@3
		B	B	.	O	O	@5
U83	SPEAKER-COAXIAL 2 WAY	B	B	O	O	B	

@1 : FOR GUAM  
 @2 : FOR CANADA  
 @3 : FOR PUERTO RICO  
 @4 : FOR PUERTO RICO, GUAM  
 @5 : FOR GUAM, CANADA

O : OPTION  
 B : BASE  
 . : NOT APPLIED

## 2. TABLE OF COLOR CODE & AVAILABLE CODE

### LEGANZA

When ordering the color parts, the color code should be quoted.

EXTERIOR COLOR		INTERIOR COLOR
CODE	DESCRIPTION	
11U	GALAXY WHITE(S)	GREY
23U	CARIBBEAN BLUE(P)	GREY
42U	DEEP BLUISH GREEN(M1)	BEIGE
62U	KHAKI BEIGE(M2)	BEIGE
74U	SPINEL RED(M1)	BEIGE
83L	GRANADA BLACK(M1)	GREY
92U	POLY SILVER(M2)	GREY
93U	OLIVE SILVER(M2)	BEIGE

# NUBIRA

When ordering the color parts, the color code should be quoted.

EXTERIOR COLOR		INTERIOR COLOR (CODE)
CODE	DESCRIPTION	
11U	GALAXY WHITE	BEIGE
20U	PACIFIC BLUE	GREY
24U	REGATTA BLUE	GREY
40U	SHERWOOD GREEN	BEIGE
42U	DEEP BLUISH GREEN	GREY
60U	BRIGHTON GOLD	BEIGE
61U	MONSTONE BEIGE	GREY
70U	RED ROCK	BEIGE
73L	SUPER RED	GREY
92U	POLY SILVER	GREY



**LANOS**

- COLOR CODE TABLE

When ordering the color parts, the color code should be quoted.

EXTERIOR COLOR		INTERIOR COLOR	REMARKS
CODE	DESCRIPTION		
11U	GALAXY WHITE	GREY	
21U	AZURITE BLUE	GREY	
42U	DEEP BLUISH GREEN	GREY	
74U	SPINEL RED	GREY	
92U	POLY SILVER	GREY	

- AVAILABLE CODE TABLE

The following table shows the available countries for each code.

CODE	DESCRIPTION	BODY		LEVEL			REMARKS
		4 N	3 H	I	II	III	
XCA	COLD AREA	B	B	A	A	A	@1
PX8	WHEEL(5.5JX14),STEEL	B	B	A	A	.	@1
W9M	WHEEL COVER-BLACK	B	B	A	A	.	@1
P11	WHEEL COVER, 14inch	B	B	A	A	.	@1
JB4	BRAKE DISC-VENT,14 inch	B	B	A	A	.	@1
C59	UNCOMPLETED, AIR CON	.	B	A	.	.	@2
C35	REAR HEATING DUCT	B	B	A	A	A	@1
XK0	CHILD SEAT BELT	B	B	A	A	A	@1
DB0	SUNSHADE-LH,W/O MIRROR	B	B	A	.	.	@1
UC0	SPEEDOMETER, KILOMETER	B	B	A	A	A	@1
DTR	DAYTIME RUNNING LIGHT	B	B	A	A	A	@1
DD4	CO-DRIVE MIRROR,POWER	B	B	.	A	B	@1
VH4	MUD GUARD	B	B	A	A	B	@1
XPR	PUERTO RICO-MANDATORY	B	B	A	A	A	@2
XGU	GUAM-MANDATORY	B	B	A	A	A	@3

@1 : FOR CANADA  
 @2 : FOR PUERTO RICO  
 @3 : GUAM

A : AVAILABLE  
 B : BASE  
 . : NOT APPLIED.

## IV. EXPLANATION OF CATALOG COMPOSITION

1111 ENGINE UNIT(SOHC)

I T C	KEY NO.		PART NAME											OPTION	REMARKS			
	PART NO.	C H G	MODEL					L / R	Q T Y	P / C O D E	EFFECTIVE POINT							
			BODY		LEVEL						VIN1		VIN2					
			4N	3H							FROM	TO	FROM			TO		
	1	ENGINE A																
<input type="checkbox"/>	96184185	M.	B	B	S	O	.		1	100001	BJ						-XCA	
<input type="checkbox"/>	96352330	M.	B	B	A	A	.		1	100001	B6						&XCA	
	96350294	M.	B	B	O	S	S		1	100001	HJ						-XCA	
<input type="checkbox"/>	96352335	M.	B	B	A	A	A		1	100001	H6						&XCA	
	96350292	A.	B	B	O	O	O		1	100001	HL						-XCA	
	96352336	A.	B	B	A	A	A		1	100001	H7						&XCA	
	2	SHACKLE-ENG TRANSPORT																
<input type="checkbox"/>	90076951	..	B	B	S	S	S		1	11C021								
	3	BOLT																
<input type="checkbox"/>	02865535	..	B	B	S	S	S		1	11C021								M8X22

### \*\* EXPLANATION OF CATALOG COMPOSITION

GROUP NO.

GROUP NAME

PART NAME

KEY NUMBER(FIG.NO)

PART NUMBER

ITC (Interchangeability CODE)

MODEL

OPTION

L/R

QT'Y (Quantity)

EFFECTIVE POINT

REMARKS

PART IDENTIFICATON CODE

CHANGE CODE

PNC (Part Number Control Code)

**1. GROUP NO.**

The 1st one digit indicates " MAIN GROUP NO." and next three digits indicate " SUB GROUP NO."

**2. SUB GROUP NAME**

This indicates the name of sub group within the main group.

**3. PART NAME**

Part names are shown in multi-language (example)

(E).....English (F).....French

**4. KEY NUMBER**

Key number corresponds with the reference number on the illustration. Key number is not always sequenced.

**5. PART NUMBER**

The number is assigned to each part.

**6. ITC(INTERCHANGEABILITY CODE)**

When any part number has been changed due to design modification, this indicates the interchangeability between two part numbers.

\*Interchangeability symbols

Y : The old and new parts are interchangeable.

N : The old and new parts are not mutually interchangeable.

O : The new part can be used for the old part but the reverse is not possible.

**7. MODEL**

This column indicates Engine Type, Transaxle Type,Body Type, Trim Level.

T/A (TRANSAXLE)

CODE	DESCRIPTION
.	Common
M	Manual transaxle
A	Automatic transaxle(All)
G	Automatic transaxle(GMPT)
F	Automatic transaxle(ZF16)

ENG (ENGINE)

CODE	DESCRIPTION
.	Common
Y	1.5 SOHC
6	1.6 DOHC

BODY (BODY TYPE)

CODE	DESCRIPTION	CODE	DESCRIPTION
4N	4 Door notchback	.	Not Applied
3H	3 Door hatchback	B	Applied
5W	5 Door station wagon		

LEVEL (TRIM LEVEL)

VEHICLE NAME	DESCRIPTION	
LANOS	I / II / III	S / SE / SX
NUBIRA	I / II / III	SE / SX / CDX
LEGANZA	I / II / III	SE / SX / CDX

"LEVEL" column indicates the expression of applicable trim level.

S : Standard equipment.

O : Option equipment.

A : Available equipment for the special package according to the area regulation.

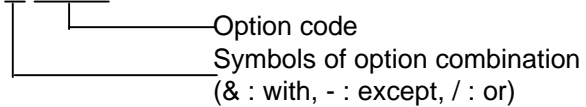
. : Not applied

### 8. OPTION

This column indicates option code.

Refer to "VI. TABLE OF OPTION CODE "

ex) ○ ○ ○ ○



### 9. L/R

This column indicates mounting position of part.

L : Left hand side

R : Right hand side

### 10. Q'TY

This column indicates the quantity required per sub-group.

The quantity is normally shown by numeric or by symbol as bellow.

A : As required quantity.

### 11. EFFECTIVE POINT

This column indicates the " VIN " in production.

### 12. REMARKS

Supplementary or reference information is given in this column.

Specification, Use, Type, Applicable Country, etc.

### 13. PART IDENTIFICATION CODE

This column indicates part identification code that is marked with two characters. Part identification code will help you in discrimination the parts easily. But, all parts will not always carry the part identification code

### 14. CHG (CHANGE)

This column indicates code of the changed parts.

CR : Correction

AD : Addition

DL : Deletion

MD : Modification

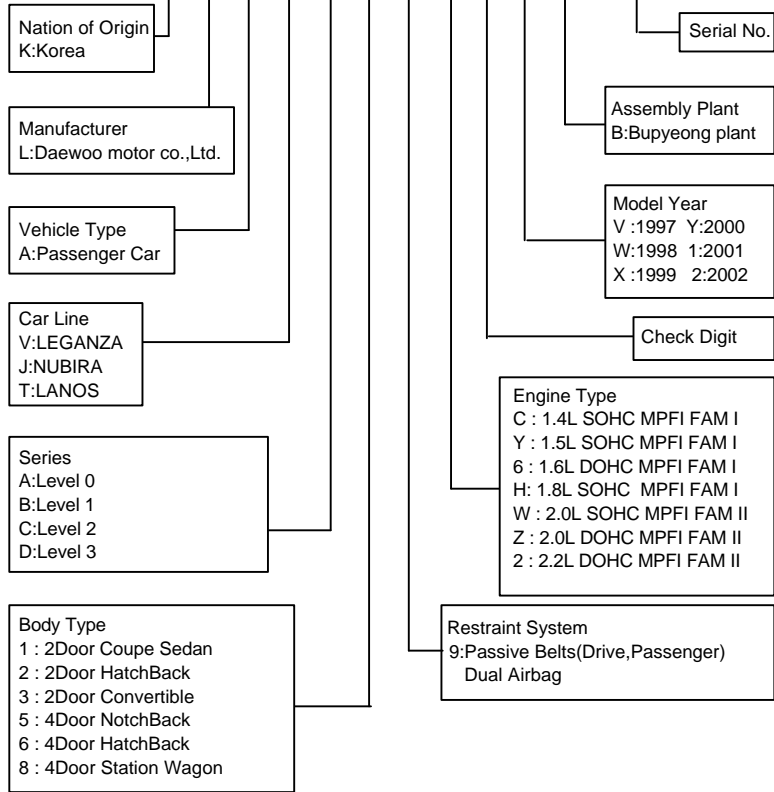
### 15. PNC (Parts Number Control Code)

This column indicates the code of parts number control.

# V. CONSTRUCTION OF VEHICLE IDENTIFICATION NUMBER

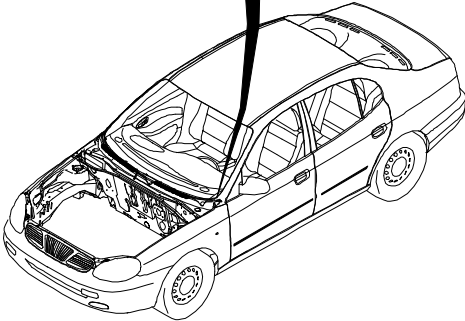
## LEGANZA / NUBIRA / LANOS

K L A V A 6 9 2 \* 2 B 123456

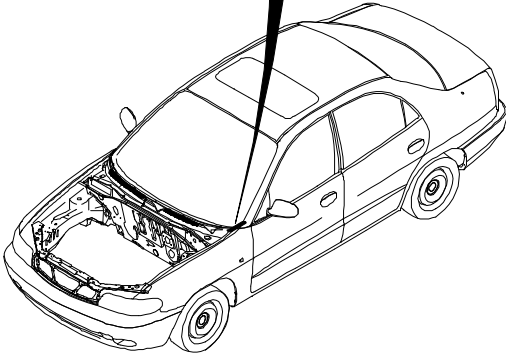
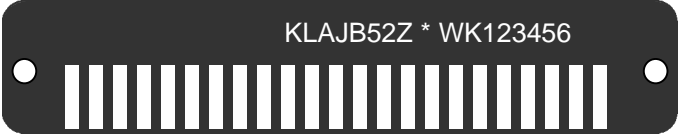


**LOCATION OF VEHICLE IDENTIFICATION NUMBER**

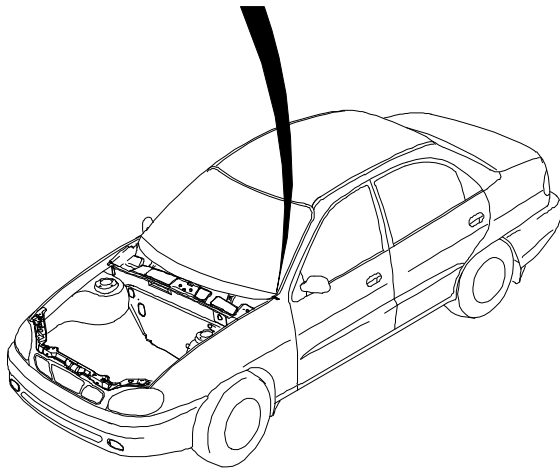
**LEGANZA**



**NUBIRA**



LANOS



# VI. ENGINE IDENTIFICATION NUMBER

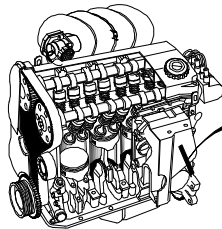
## FAMILY [I] TYPE

A 15 D M N 123456 B

Example)

- 1.3 SOHC
  - A13SMS 123456B
- 1.5 SOHC
  - A15SMS 123456B
- 1.5 DOHC
  - A15DMS 123456B
- 1.6 DOHC
  - A16DMS 123456B

Engine License  
 A : IN LINE  
 V : V TYPE  
 Engine  
 Displacement  
 13 : 1.3L  
 15 : 1.5L  
 16 : 1.6L  
 Cam Mechanism  
 D : DOHC  
 S : SOHC  
 Injection Type  
 E : MPI  
 L : LPG  
 Compress Ratio  
 N : 9.0<N<9.5  
 S : 9.5<S<10.0  
 Serial No.  
 Plant Location  
 B : BUPYONG



A16DMN 123456B

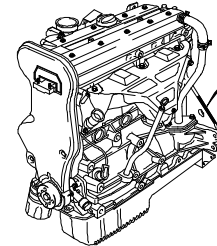
## FAMILY [II] TYPE

C 20 S E D 123456

Example)

- 1.8
  - 2.0 LPG
    - C20NL 123456
  - 2.0 DOHC
    - C20SED 123456

Exhaust Emission  
 Limit  
 C : Domestic,  
 Others  
 X : Europe  
 T : North America  
 Engine  
 Displacement  
 18 : 1.8L  
 20 : 2.0L  
 22 : 2.2L  
 Cam Mechanism  
 N : SOHC  
 S : DOHC  
 Injection Type  
 E : MPI  
 L : LPG  
 Plant Location  
 D : Daewoo Motor  
 co., LTD



C20SED 123456



# VII. TRANSAXLE IDENTIFICATION NUMBER

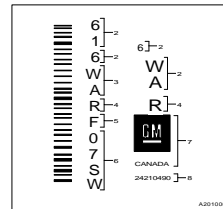
## MANUAL TRANSAXLE



Serial No.

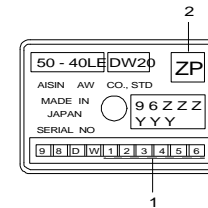
PART IDENTIFICATION CODE

## AUTOMATIC TRANSAXLE TYPE [GMPT]



- 1 Assembly plant (Windsor, Canada)
- 2 Model Year (1996)
- 3 Broadcast Code
- 4 Model Name (4T40E)
- 5 Update Level
- 6 Sequential Number
- 7 Manufacturer
- 8 Part Number

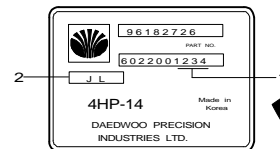
## AUTOMATIC TRANSAXLE TYPE [AISIN]



Serial No.

PART IDENTIFICATION CODE

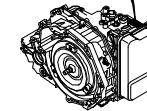
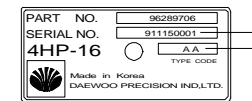
## AUTOMATIC TRANSAXLE TYPE [ZF14]



Serial No.

PART IDENTIFICATION CODE

## AUTOMATIC TRANSAXLE TYPE [ZF16]



Serial No.

PART IDENTIFICATION CODE

## VIII. TABLE OF OPTION CODE

CODE	DESCRIPTION	CODE	DESCRIPTION	CODE	DESCRIPTION	CODE	DESCRIPTION
&	TOGETHER WITH	BS2	BODY SIDE MOLDING	FL2	HEAD LAMP-SAE,LHD	QTJ	TIRE-175/70 R13
-	EXCEPT	BY9	HEADLINING-FORMED CLOTH	FL3	HEAD LAMP-ECE TYPE,RHD	QUS	TIRE-185/60 R14
/	OR	C15	AIR CONDITIONER(ATC)	FL5	SIDE INDICATOR LAMP,FRT,RR	RC2	REMOTE CONTROL S/W-STRG
11U	GALAXY WHITE - SOLID	C20	VARIABLE SPEED WIPER	FL7	LAMP-REAR COMB,SAE	RW1	RADIO WAVE-1st TYPE
20U	PACIFIC BLUE- MICA	C25	WASHER & WIPER-BACK WINDOW	FL8	LAMP-REAR COMB,ECE	SKL	LEATHER T/M KNOB(A/T)
24U	REGATTA BLUE- MICA	C34	AIR FILTER	FQ4	AXLE RATIO-3.72	T01	LAMP-LICENSE PLATE,ECE
2G5	CANADA-MANDATORY	C35	HEATER REAR LEG	FW5	FLUSH WHEEL COVER,14"	T11	LICENSE PLATE,SAE
40U	SHERWOOD GREEN-MICA	C46	HEATER	G39	AXLE RATIO-3.944	T26	LAMP-TURN SIGNAL,ECE
42U	DEEP BLUISH GREEN-MICA	C50	REAR WINDOW DEFFOGER-W/TIMER	G41	AXLE RATIO-4.176	T45	REAR SPOILER(BLACK)
60I	BEIGE-INTERIOR	C54	HEATING MAT, DRIVER	GS4	AXLE RATIO-3.545	T96	LAMP-FRONT FOG
60U	BRIGHTON GOLD-METALLIC	C55	REAR WINDOW	GS7	AXLE RATIO-3.979	T97	FOG LAMP-INTEGRATED IN BUMPER
61I	BEIGE-INTERIOR	C58	HEATING MAT, PASSENGER	JB3	BRAKE DISC-VENT TYPE,13 INCH	TA0	CHILD SEAT TETHER ANCHORAGE
61U	MOONSTONE BEIGE-METALLIC	C59	UNCOMPLETED AIR CONDITIONER	JB4	BRAKE DISC-VENT TYPE,14 INCH	TCP	TRAILER PACKAGE(DEALER OPTION)
70U	RED ROCK- MICA	C60	AIR CONDITIONER	JB6	BRAKE DISC	TLD	TRUNK LID HANDLE-CHROME COATING
73L	SUPER RED- SOLID	C95	LAMP-ROOM,CENTER	JL9	ANTI- LOCK BREAK SYSTEM	TN6	BATTERY-55AH
80I	INTERIOR COLOR BLACK	C99	LAMP-ROOM,FRONT	JTC	TRACTION CONTROL SYSTEM	TNH	BATTERY-55AH,HIGH
82I	INTERIOR COLOR GRAY	CAL	CAR ALARM & ANTI-THEFT	K30	CRUISE CONTROL	U14	DIGITAL CLOCK
85I	GREY-INTERIOR	CF6	SUN ROOF,POWER	L84	1.8 DOHC ENGINE(M.P.I)	U32	INSTRUMENT CLOCK-DIGITAL
92U	POLY SILVER-METALLIC	CN5	CANISTER-1.85	L88	2.0 DOHC ENGINE(M.P.I)	U47	NEUTRAL STARTER-CLUTCH
A30	NON POWER-WINDOW	CRS	LAMP-ROOM,FRONT(SUNROOF)	L90	2.2 DOHC ENGINE(M.P.I)	U67	DAY TIME RUNNING LIGHT
A31	POWER OPERATING WINDOW(FR+RR)	D33	MIRROR-REMOTE CONTROL,DRIVER	M89	TRANSAXLE-M/T 5 SPEED(CLOSE	U77	ANTENNA-BLACK MAST
A32	POWER OPERATING WINDOW(FR)	D39	MIRROR-REMOTE	ML9	TRANSAXLE-AUTO 4 SPEED(ZF T/A)	U85	DIGITAL CLOCK W/OUTSIDE
A66	WINDOW-POWER(FRT&RR), 1TOUCH	D40	MIRROR-HEATING FUNCTION	N33	TILTABLE STEERING COLUMN	U93	SPEAKER-6EA
ABF	DUAL AIR BAG SYSTEM	DD4	MIRROR-ELECTRIC,PASSENGER SIDE	N40	POWER STEERING	UB0	AUDIBLE WARNING CHIME
AG1	POWER SEAT, DRIVER SIDE-LEATHER	DHC	CHROME COATING INSIDE DOOR	N51	MANUAL STEERING	UC0	SPEEDOMETER(KILOMETER/H)
AGD	HEIGHT ADJUSTABLE, MANUAL DUAL	DM0	MIRROR-MANUAL FOLDING,	N76	WHEEL 5JX13(STEEL)	UC1	SPEEDOMETER(MILE/H)
AJ7	AIR BAG SYSTEM-PASSENGER	DM6	MIRROR-MANUAL FOLDING, MANUAL	NET	NET-LUGGAGE	UCO	SPEEDOMETER(KM/H)
AM9	REAR SEAT BACK-FOLD DOWN	DM7	MIRROR-MANUAL FOLDING,	NM1	ON BOARD REFUELING VAPOR RECO	UE1	EQUALIZER
AP1	ASSIST GRIP-3EA	DM8	MIRROR-MOLDED COLOR	NP5	STEERING WHEEL-LEATHER COVER	UIP	ULTRASONIC INTERIOR PROTECTION
AP5	SEAT-REAR,ARM REST W/O DEPOSIT	DM9	MIRROR-BODY COLOR	P11	FLUSH WHEEL COVER-14"	UNB	RADIO BLANK (with W/HARNESS)
APP	BELT-SEAT,PRETENSIONER,FRT	DP0	MIRROR-MANUAL FOLDING,	P13	FLUSH WHEEL COVER-13"	UP1	CD CHANGER
AQ3	FRONT SEAT-RECLINING(DIAL) &	DSL	SUNSHADE-W/MIRROR ILLUMINATION	P21	FLUSH WHEEL COVER,14"	US5	SPEAKER,TWEETER
AS7	BELT-FRT,3 POINT ELR,HYBRID	DSP	EQUALIZER-DIGITAL SIGNAL	PA5	CAP-HUB	UT4	ANTENNA-MANUAL(REAR)
ATP	ANTI-THEFT WIRING PROVISION	DTR	DAY TIME RUNNING LIGHT	PG1	WHEEL 6. 0JX15(STEEL)	UT5	ANTENNA-POWER(REAR)
AU3	ELECTRIC DOOR LOCKING	FAC	AUTO TEMPERATURE DISPLAY("C)	PG4	WHEEL 5.1/2JX14(ALLOY)	UT8	ANTENNA-ROOF
AYT	HEADREST-UP/DOWN & TILT	FAF	AUTO TEMPERATURE DISPLAY("F)	PG9	WHEEL 6. 0JX15(ALLOY)	UXA	SPEED SENSITIVE POWER STEERING
B11	SEAT BACK POCKET	FAW	WARNING TRIANGLE(DEALER OPTION)	PX8	WHEEL 5.1/2JX14(STEEL)	UZ9	KEY INTERLOCK SYSTEM
B15	ROCKER MOLDING	FC0	FUEL CUT OFF SWITCH	QQT	TIRE-SPARE,TEMPORARY	VH4	MUD GUARD
B58	FLOOR CARPET-DELUXE	FE2	ELECTRONIC CONTROL SUSPENSION	QRF	TIRE 205/60 R15	VT8	TWO TONE COLOR
B59	FLOOR MAT HOOK	FL1	HEAD LAMP-ECE TYPE,LHD	QRX	TIRE 195/70 R14	W3S	LETTERING - SX

CODE	DESCRIPTION	CODE	DESCRIPTION	CODE	DESCRIPTION	CODE	DESCRIPTION
W3T	LETTERING - CDX						
W4V	LETTERING - SE						
W6C	TRIM-CLOTH,DLX						
W6E	TRIM-CLOTH,DLX						
W6R	SPORTY-FABRIC						
W6S	SPORTY-LEATHER						
W6W	TRIM-CLOTH,STD						
W8K	CASSETTE(25WX4CH) & COMPACT DISC						
W8V	CD PLAYER						
W9M	WHEEL-BLACK						
W9U	WHEEL-SILVER						
WGM	METALLIC GRAIN						
WGR	WOOD GRAIN TRIM						
WGS	METALLIC GRAIN						
XA1	SOUTH AFRICA-MANDATORY						
XAF	AFRICA-MANDATORY						
XAL	ALGERIA-MANDATORY						
XCA	EQUIPMENT-COLD AREA						
XCE	CHILE-MANDATORY						
XCH	CHINA-MANDATORY						
XCP	SHEET METAL-COATED						
XFR	FRANCE-MANDATORY						
XGU	GUAM-MANDATORY						
XJR	JORDAN-MANDATORY						
XLP	STEERING WHEEL COVER-LEATHER						
XM2	LUMBAR SUPPORT-DRIVER SEAT						
XM3	LUMBAR SUPPORT-PASSENGER SEAT						
XPR	PUERTORICO-MANDATORY						
XST	SPORTY PACKAGE						
XTK	TURKEY-MANDATORY						
XTW	TAIWAN-MANDATORY						
XUK	UK-MANDATORY						
XYM	YEMEN-MANDATORY						

## IX. ABBREVIATIONS

CODE	DESCRIPTION	CODE	DESCRIPTION	CODE	DESCRIPTION
1ST	FIRST	EXPN	EXPANSION	RAD	RADIATOR
2ND	SECOND	EXTN	EXTENSION	RECL	RECLINER,-ING
3RD	THIRD	F/PNL	FLOOR PANEL	REF	REFRIGERANT
A	ASSEMBLY	FDG	FEEDING	REINF	REINFORCEMENT
A/C	AIR CONDITIONER,-ING	FLR	FLOOR	REV	REVERSE
A/T	AUTO TRANSMISSION	FRT	FRONT	RKE	REMOTE KEY(ENTRY SYSTEM)
ABS	ANTI LOCK BRAKE SYSTEM	FWD	FORWARD	RR	REAR
ACCEL	ACCELERATOR	G/S	GEAR SHIFT	RTN	RETURN
AL	ALUMINIUM	HARN	HARNES	S/ABS	SHOCK ABSORBER
ATAS	ANTI THEFT ALARM SYSTEM	HYD	HYDRAULIC	S/BACK	SEAT BACK
ATC	AUTO TEMPERATURE CONTROL	I/MANIF	INTAKE MANIFOLD	S/BELT	SEAT BELT
AUX	AUXILIARY	I/P	INSTRUMENT PANEL	S/COL	STEERING COLUMN
BTSI	BRAKE TRANSMISSION SHIFT INTERLOCK	I/S	INSIDE	S/W	SWITCH
C/G	CROSS GROOVE	IACV	IDLE AIR CONTROL VALVE	SDM	SENSING & DIAGNOSTIC MODULE
C/MBR	CROSS MEMBER	IGN	IGNITION	SECD	SECONDARY
C/V	CONSTANT VELOCITY	INCL	INCLUDING	SHF	SHAFT
CATAL CONV	CATALYTIC CONVERTER	INL	INLET	SIR	SUPPLEMENTAL INFLATE RESTRAINT
CD	COMPACT DISC	INR	INNER	SOL	SOLENOID
CLU	CLUTCH	INST	INSTRUMENT	STD	STANDARD
CM/SHF	CAM SHAFT	INT	INTAKE	STRG	STEERING
CMPR	COMPRESSOR,-SION	INTER	INTERMEDIATE	SUCT	SUCTION
CNSL	CONSOLE	L/COMPT	LOAD COMPARTMENT	SUPT	SUPPORT,-ING
COMB	COMBINATION	L/PLATE	LICENSE PLATE	SYN	SYNCHRONIZER
COMPL	COMPLETE	LONGI	LONGITUDINAL	T/A	TRANSAXLE
COMPT	COMPARTMENT	LWR	LOWER	T/BODY	THROTTLE BODY
CONN	CONNECTING,-TOR,-NECT	M/T	MANUAL TRANSMISSION	T/GATE	TAIL GATE
CONT	CONTROL	MANIF	MANIFOLD	T/LID	TRUNK LID
CONV	CONVERTER	MAP	MANIFOLD AIR PRESSURE	T/M	TRANSMISSION
CPS	CRANK POSITION SENSOR	MAT	MANIFOLD AIR TEMPERATURE	T/P	TRI POT
CR/SHF	CRANK SHAFT	MBR	MEMBER	T/SIG	TURN SIGNAL
CTR	CENTER,-RAL	MOD	MODULE	TCC	TORQUE CONVERTER CLUTCH
CUSH	CUSHION	MT	MOUNTED,-ING	TCM	TRANSMISSION CONTROL MODULE
CYL	CYLINDER	NEU	NEUTRAL	TEMP	TEMPERATURE
DIFF	DIFFERENTIAL	NSBU	NEUTRAL START BRAKE UNIT	THER	THERMAL
DIR	DIRECT,-TION	O/S	OUTSIDE,OVERSIZE	TILT	TILTABLE
DIS	DIRECT IGNITION SYSTEM	OBD	ON BOARD DIAGNOSTIC	TRK	TRUNK
DISTR	DISTRIBUTOR,-TION	OPG	OPENING	TXV	THERMAL EXPANSION VALVE
DLX	DELUXE	OTLT	OUTLET	U/S	UNDER SIZE
DMP	DAMPING,-PER	OTR	OUTER	UPR	UPPER
DR	DOOR	P/BRAKE	PARKING BRAKE	VENT	VENTILATED,TION,-TOR
DRL	DAY TIME RUNNIN LIGHT	P/STRG	POWER STEERING	VGIS	VARIABLE GAS INDUCTION SYSTEM
E/MANIF	EXHAUST MANIFOLD	P/WDO	POWER WINDOW	W/	WITH
ECM	ELECTRONIC CONTROL MODULE	PARK	PARKING	W/H	WHEEL HOUSE
ECU	ELECTRONIC CONTROL UNIT	PASS	PASSENGER	W/HARNES	WIRING HARNESS
EGR	EXHAUST GAS RECIRCULATION	PCB	PRINTED CIRCUIT BOARD	W/SHIELD	WINDSHIELD
ELEC	ELECTRIC,-CAL	PNL	PANEL	W/STRIP	WEATHER STRIP
ENG	ENGINE	PRIM	PRIMARY	WDO	WINDOW
ENGY	ENERGY	PROTV	PROTECTIVE	W/O	WITHOUT
EXH	EXHAUST	PWR	POWER		