

- I.
- II.
- III. /
- IV.
- V. (V.I.N)
- VI.
- VII.
- VIII.

I. 차량 외관도



매그너스



레간자



레조



라세티



누비라 II



칼로스



라노스 II
4도어



라노스 II
로미오



라노스 II
줄리엣



마티즈

II.

1 - 1.

CLASSIC	20S0		2.0 SOHC	(5) (ZF16)	가			
		STD	2.0 SOHC (LPG)	(AISIN)	LPG			
		DLX						
	LPG	STD	2.0 SOHC (LPG)	(5) (AISIN)	TAXI STANDARD			
		DLX			TAXI DELUXE			
		SDLX			TAXI S/DELUXE			
		20DS			STANDARD			
	EAGLE	20DD		2.0 DOHC	(5) (ZF16)	DELUXE		
		20DR				ROYALE		
						2.0 SOHC (LPG)	(AISIN)	EAGLE
		20DS		2.0 DOHC	(5) (ZF16)	STANDARD		
		20DD				DELUXE / SUPER		

)
 CLASSIC : 1999.12.01 ~
 EAGLE : 2000.09.25 ~
 LPG : 2001.03.15 ~
 LPG TAXI : 2001.03.15 ~
 EAGLE SUPER : 2001.06.13 ~

1 - 2.

		CLASSIC						EAGLE	
		2		L	2	2	2	2	2
		0		P	0	0	0	0	0
		S		G	D	D	D	D	D
		0			S	D	R	S	D
가	(ZF16)	0	.	.	0	0	0	.	0
	(AISIN)	.	S	0	.	.	.	S	.
	14"	0	0	0
	16"	0	0	.	.
	16" SPORTY	0	0
		0	0	0	0	0	S	0	0
		0	0	.	0	0	0	0	0
		0	0	.	0	0	0	0	0
		0	0	.	0	0	S	0	0
		0	0	.	0	0	S	S	S
		0	0	.	0	0	S	S	S
	가	0	0	.	0	0	S	S	S
	.	0	0	0	.	0	0	0	
	0	S	.	0	0	0	S	0	
	0	0	0	0	0	0	0	0	
	0	0	0	0	S	S	S	S	
CD	0	0	.	.	0	0	0	0	
CD	0	0	.	.	0	0	0	0	
	0	0	.	0	
	0	0	.	0	
	0	0	.	.	0	0	0	0	
	S	0	
가	0	0	.	.	0	0	0	0	

*
 S : 0 : . :

1 - 1.

	18 SO	STD	1.8 SOHC	(ZF14)	SPORT
		DLX			
	18 DO		1.8 DOHC		
	20 SO		2.0 SOHC	(ZF14)	'2000.01.02
LPG	STD		2.0 SOHC	(AISIN)	
	DLX	가			
			2.0 SOHC	(AISIN)	
20 DO	STD		2.0 DOHC	(ZF14)	'2000.01.02
	UTR				
	22 DO		2.2 DOHC	(AISIN)	

)
 2.0 SOHC 가 () : 1997.02 ~ 1998.03
 2.0 SOHC LPG() : 1998.03 ~
 1.8 DOHC/2.0 SOHC/2.0 DOHC/2.2DOHC 가 : 1997.02 ~ 2000.01
 1.8 SOHC (BLACK & WHITE) : 2000.01 ~ 2000.09
 1.8 SOHC (FAM I ENGINE) : 2001.01 ~

1 - 2.

		18 SO		18 DO	20 SO	LPG		20 DO		22DO		
		STD	DLX			STD	DLX	STD	UTR			
ABS ABS+TCS	ML9	0	0	0	0	.	.	0	0	.	ZF	
	ML4	0	0	.	.	S	AISIN	
	N58	0	0	0	S	0	0	S	S	S	&AJ3	
	JL9	0	0	0	0	.	0	.	.	.	&JB6	
	JTC	0	0	0	0	.	.	0	0	0	&JB6	
	JB6	0	0	0	0	.	0	S	S	S		
	()	AJ3	0	0	0	S	0	.	S	S	S	&N58
	()	AJ7	0	0	0	0	.	.	S	S	S	
		APP	.	.	.	0	.	.	0	0	0	
		UP1	0	0	0	0	.	.	0	0	S	
가	14"	PG4	0	0	0	0	0	.	.	.		
	15"	PG9	S	S	S		
		CF6	0	0	0	0	.	0	0	0	&CRS	
		W6R	.	.	0	0	.	0	S	S		
		FE2	0	0	0	
가		C17	0	0	0	0	.	0	S	S		
		UBE	0	0	0	S	.	S	S	S		
		T43	.	.	0	0	.	0	0	0		
		GSA	S	S	SPORT	

*
 S : 0 : . :

1 - 1.

		2001	2002			
I	SL	LS	2000 LS	2.0 SOHC (LPG)	(AISIN)	
II	-	LD	2000 LD			
III	VL	LP	2000 LP			
IV	-	SPECIAL	-			
V	VG	VG	VG	2.0 DOHC (가)	(ZF/4HP16)	

)
 '01 (U100) : 1999.12.24 ~ 2001.04.15
 '02 (U145) : 2001.04.16 ~ 2002.05.31
 '03 (U146) : 2002.06.01 ~

1 - 2.

1) '01 (1999.12.24 ~ 2001.04.15)

		I	III	V		
ABS 가 () () CD CD TV 5 ()	14"	ML4	0	0	-	AISIN ZF(4HP16) 195/60R 15 TIRE &C34&C35 &N58&VT3 &N58&VT3 &TVM/GPS &TVM &ABF/AJ3 &ABF/AJ3 &C15 &W6R
	15"	MM9	-	-	0	
		PG4	0	S	-	
		PG9	-	0	S	
		C15	0	0	0	
		CF6	-	0	0	
		JL9	0	S	S	
		W6R	-	0	0	
		AJ3	0	0	0	
		ABF	0	0	0	
		W8V	0	S	S	
		WCC	-	0	0	
		TVM	-	0	0	
		U72	-	0	0	
	GPS	-	0	0		
	N58	0	0	0		
	VT3	0	0	0		
	C34	0	0	0		
	C54/C58	-	0	0		
	CAL	0	0	0		

*
 S : 0 : - :

1 - 2.

2) '02 (2001.04.16 ~ 2002.05.31)

		I	II	III	IV	V	
ABS 가 () CD CD CD TV	ML4	0	0	0	0	-	AISIN
	MM9	-	-	-	-	0	ZF(4HP16)
	PY4	-	S	S	-	-	
	PG9	-	-	-	S	S	195/60R 15 TIRE
	C15	0	0	0	0	0	&C34&C35
	CF6	-	0	0	0	0	
	JL9	0	0	S	S	S	
	W6R	-	-	-	S	-	
	ABF	0	0	0	0	0	&N58&VT3
	W8V	0	0	S	S	S	
	W8M	-	-	0	0	0	W/MP3
	WCC	-	-	0	0	0	
	TVM	-	-	0	0	0	
	U72	-	-	0	0	0	&TVM/GPS
	GPS	-	-	0	0	0	&TVM
	C54/C58	-	-	-	S	-	&C15
CAL	-	S	S	S	S	&W6R	

*
S : 0 : - :

3) '03 (2002.06.01 ~)

		I	II	III	IV	V	
ABS 가 () CD CD CD AV	ML4	0	0	0	-	-	AISIN
	MM9	-	-	-	-	0	ZF16
	PY4	-	S	S	-	-	
	PG9	-	0	0	-	S	195/60R 15 TIRE
	C15	0	0	0	-	0	&AQS
	CF6	-	0	0	-	0	
	JL9	0	0	S	-	S	
	W6R	-	-	0	-	0	
	ABF	-	0	0	-	0	
	W8V	0	0	S	-	S	
	W8M	-	-	0	-	0	W/MP3
	WCC	-	-	0	-	0	
	UAV	-	-	0	-	0	
	U72	-	-	0	-	0	&UAV/GPS
	GPS	-	-	0	-	0	
	GPT	-	0	0	-	-	
UAX	0	0	0	-	0		
A57	-	-	0	-	0		

*
S : 0 : . :

II

1 - 1.

	'00 ~ '01	'02			
II	I		L S	1.5 DOHC	(5) (ZF16)
	II		L X		
	III		SPECIAL		
	IV		-	2.0 SOHC	(5) (ZF14)

)
 '00 (J150) : 1999.02.01 ~ 2000.08.08
 '01 (J190) : 2000.08.09 ~ 2001.04.11
 '02 (J195) : 2001.04.12 ~

)
 5 DOOR WAGON (/)

1 - 2.

1) '00 ~ '01 (1999.02.01 ~ 2001.04.11)

(/) () (CDP)	(ZF16) MM9	0	0	0	-	III, IV 15"
	(ZF14) ML9	-	-	-	0	
	14" PG4	0	0	-	-	
	ABF	0	0	0	0	
	AJ3	0	0	0	0	
	CF6	0	0	0	0	
	W8V	0	0	-	-	
	UP1	-	-	0	0	
	C60	0	0	-	-	
	C15	-	0	0	0	
	ABS JL9	0	0	0	0	
	WLR SEAT BELT AWL	0	0	0	0	
	C35	-	0	0	0	
	DISC JB6	0	0	0	0	
가 SEAT W6R	-	-	0	0		
() RC2	-	-	0	0		

*
 S : 0 : . :

II

1 - 2.

2) '02 (2001.04.12 ~)

(ZF16)	MM9	0	0	0	ZF16
14"	PG4	0	0	S	185/65R14 TIRE
15"	PG9	-	-	0	195/55R15 TIRE
	ABF	0	0	0	
(/)					
()	AJ3	0	0	S	
	N58	0	0	S	&AJ3/ABF
()					
	CF6	0	0	0	
CD	W8V	-	0	-	
CD	W8M	-	-	0	W/MP3
	C60	0	-	-	
	C15	-	0	0	
ABS	JL9	0	0	0	
WLR SEAT BELT	AWL	0	0	S	&C15
	C35	-	0	0	
가 SEAT	W6R	-	-	0	
	KLP	-	0	0	&MM9
	JB6	0	0	0	
(DISC)					

*

S : 0 : . :

1 - 1.

2002

	4	I ()	1.5 SOHC	
		II ()	1.5 DOHC	
	5	I ()	1.5 SOHC	
		II ()	1.5 DOHC	

1 - 2.

2002

		4 N	5 H	I	II	
		ABF	B	B	0	0
()	()	AJ8	B	B	.	0
		C60	B	B	0	0
		CF6	B	B	0	0
		GPS	B	B	0	0
		GPT	B	B	.	0
ABS		JL9	B	B	0	0
		KLP	B	B	.	0
		ML4	B	B	0	0
		N40	B	B	0	0
	.14"	PZ4	B	B	0	0
		T96	B	B	0	S
AV		UAV	B	B	.	0
		UAX	B	B	0	0
CD		UP1	B	B	0	0

*

- B :
- . :

*

- S :
- 0 :
- . :

/ II

1 - 1.

97

	4		1.5 SOHC() 1.5 DOHC
	3		1.5 DOHC 1.6 DOHC
	5		1.5 SOHC 1.5 SOHC

) 1.5SOHC (/)

) 97 5 1.5SOHC 98 5 1.5SOHC

97 5 1.5SOHC 98 5 1.5SOHC

98

	4	13S 15S 15SPR 15D	1.3 SOHC() 1.5 SOHC() 1.5 SOHC 1.5 DOHC
	3	15D 16D	1.5 DOHC() 1.6 DOHC()
	5	13S 15S 15SPR	1.3 SOHC 1.5 SOHC 1.5 SOHC

) 1.3SOHC (/)
1.5SOHC (/)
1.5SOHC (/)

99 ~ 2000 (T150)

	4	13S 15S 15SPR 15D	1.3 SOHC() 1.5 SOHC() 1.5 SOHC 1.5 DOHC
	3	15D 16D	1.5 DOHC () 1.6 DOHC()
	5	13S 15S 15SPR	1.3 SOHC 1.5 SOHC 1.5 SOHC

) 1.3SOHC (/)
1.5SOHC (/)

/ II

1 - 2.

97

								()
ABS () (CD PLAYER) .14"	ML4	0	0	0	.	0	0	
	N40	0	0	0	0	0	0	
	JL9	0	0	0	0	0	0	
	C60	0	0	0	0	0	0	
	AJ3	0	0	0	0	0	0	
	ABF	0	0	0	0	0	0	
	W8V	0	0	0	0	0	0	
	T97	0	0	S	S	.	0	
	PG4	0	0	0	0	0	0	
	CF6	0	0	0	0	0	0	

*
- S :
- 0 :
- . :

98

		4			3			5			()
		1	1	1	1	1	1	1	1	1	
ABS () (CD PLAYER) .14"		3	5	5	5	5	6	3	5	5	
		S	S	S	S	D	D	D	S	S	
				P						R	
				R							
	ML4	.	0	0	0	0	.	0	0	0	
	N40	0	0	S	S	S	0	0	0	S	
	JL9	0	0	0	0	0	0	0	0	0	
	C60	0	0	0	0	0	0	0	0	0	
	AJ3	0	0	0	0	0	0	0	0	0	
	ABF	0	0	0	0	0	0	0	0	0	
	W8V	0	0	0	0	0	0	0	0	0	
	N33	0	0	S	S	S	0	0	0	S	
	AU3	0	0	S	S	S	0	0	0	S	
	U32	0	S	S	S	S	0	S	S	S	
	PG4	0	0	0	0	0	0	0	0	0	
CF6	0	0	0	0	0	0	0	0	0		

*
- S :
- 0 :
- . :

/ II

1 - 2.

99 (T150)

		4			3			5			()
		1 3 S	1 5 S	1 5 S P R	1 5 D	1 5 D	1 6 D	1 3 S	1 5 S	1 5 S P R	
ABS	ML4	.	0	0	0	0	.	0	0		
()	N40	0	S	S	S	S	.	S	S	S	
	JL9	0	0	0	0	0	0	0	0	0	
	C60	0	0	0	0	0	.	0	0	0	
	AJ3	0	0	0	0	0	.	0	0	0	
(CD PLAYER)	ABF	0	0	0	0	0	.	0	0	0	,
.14"	W8V	0	0	0	0	0	.	0	0	0	,
	N33	0	0	S	S	S	0	0	0	S	
	AG4	.	0	S	S	S	.	0	0	S	
	PG4	.	0	S	S	0	.	0	0	S	
가	CF6	0	0	0	0	0	.	0	0	0	
	W6R	.	0	0	0	0	.	0	0	0	
	W6S	0	0	S	
	T97	.	.	S	S	S	.	0	0	S	
가	FL6	S	.	0	0	S	
	XLP	.	0	0	0	S	.	0	0	S	
	VT8	S	S	0	0	S	
	XST	S	.	0	0	S	

2000 (T150)

		4			3			5			()
		1 3 S	1 5 S	1 5 S P R	1 5 D	1 5 D	1 6 D	1 3 S	1 5 S	1 5 S P R	
ABS	ML4	.	0	0	0	0	.	0	0		
()	N40	0	S	S	S	S	.	S	S	S	
	JL9	0	0	0	0	0	.	0	0	0	
	C60	0	0	0	0	0	.	0	0	0	
	AJ3	0	0	0	0	0	.	0	0	0	
(CD PLAYER)	ABF	0	0	0	0	0	.	0	0	0	,
.14"	W8V	0	0	0	0	0	.	0	0	0	,
	PG4	.	0	0	0	0	.	0	0	0	
	CF6	0	0	0	0	0	.	0	0	0	
가	W6R	.	0	0	0	0	.	0	0	0	
가	XLP	.	0	0	0	S	.	S	S	S	
가	GSA	.	0	0	0	0	.	0	0	0	
-	801	.	0	0	0	S	.	S	S	S	

*
- S :
- 0 :
- . :

/ II

1.

'2001 2 14

0.8 SOHC	5 3 4		5 5	ME(I) MS(II) MD(III)

* : ME(I)

'2001 2 15 (VIN No : 642347 ~)

0.8 SOHC	5	5 5		VAN(I) MD(II) MX(III)

III.

/

()

		가
11U	GALAXY WHITE(S)	601 (BEIGE)
13U	WHITE PEARL(M1)	
30U	MIDNIGHT BLUE(M1)	
42U	DEEP BLUSH GREEN(M1)	
65U	ELEGANT BEIGE(M1)	
64U	RED BROWN(M1)	
73U	DARK WINE PURPLE(M1)	
83L	GRANADA BLACK(M1)	
83U	SKY GREY(M2)	
92U	POLY SILVER(M2)	

S = SOLID
M1 = MICA
M2 = METALLIC

()

1997 MODEL(199702 ~ 199802)

		가
11U	GALAXY WHITE(S)	601 (BEIGE)
23U	CARIBBEAN BLUE(P)	
45U	MOSSWOOD GREEN(M1)	
52U	HIGHWAY YELLOW(S)	
62U	KHAKI BEIGE(M2)	
69U	AUTUMN BROWN(M1)	
74U	SPINEL RED(M1)	
81U	STREAM LINE GREY(M1)	
83L	GRANADA BLACK(M1)	
93U	OLIVE SILVER(M2)	

S = SOLID
M1 = MICA
M2 = METALLIC
P = PALIOCROM

1998/1999/2000/2001 MODEL(199802 ~)

		가	LPG
11U	GALAXY WHITE(S)	601/821 (BEIGE /GREY)	601/821 (BEIGE /GREY)
23U	CARIBBEAN BLUE(P)		
42U	DEEP BLUISH GREEN(M1)		
45U	MOSSWOOD GREEN(M1)		
52U	HIGHWAY YELLOW(S)		
62U	KHAKI BEIGE(M2)		
81U	STREAM LINE GREY(M1)		
83L	GRANADA BLACK(M1)		
92U	POLY SILVER(M2)		
93U	OLIVE SILVER(M2)		

S = SOLID
M1 = MICA
M2 = METALLIC
P = PALIOCROM

* 가 : 601 (BEIGE) ----- 1998 ~ 1999 MODEL YEAR
: 821 (GREY) ----- 2000 ~ 2001 MODEL YEAR
* LPG : 601 (BEIGE) ----- 2001 MODEL YEAR
(TAXI SUPER DLX OPTION)
: 821 (GREY) ----- 2000 ~ 2001 MODEL YEAR

()

11U	GALAXY WHITE(S)	841/851 (GREY/ ANTHRACITE)
20U	PACIFIC BLUE(M1)	
22U	AQUA BLUE(M1)	
24U	REGATTA BLUE(M1)	
36U	GILT GREEN(M1)	
41U	GRASS GREEN(M1)	
60U	BRIGHTON BEIGE(M2)	
61U	MOONSTONE BEIGE(M2)	
70U	RED ROCK(M1)	
80U	LIGHT OPAL GREY(M2)	
87U	PEARL BLACK	
92U	POLY SILVER(M2)	

S = SOLID
M1 = MICA
M2 = METALLIC

)
841 : GREY-TWO TONE (1999.12.24 ~ 2001.04.15)
851 : ANTHRACITE-TWO TONE (2001.04.16 ~)

1 - 3. ()

11U	GALAXY WHITE (SOLID)	601 (BEIGE)
31U	DENIM BLUE (METAL)	
35U	MINT GREEN (METAL)	
44V	KHAKI GREEN (METAL)	
68U	MELANGE BEIGE (METAL)	
70U	RED ROCK (MICA)	
87U	PEARL BLACK (MICA)	
92U	POLY SILVER (METAL)	

II

()

		(611)
11U	GALAXY WHITE(S)	BEIGE INTEIR, TWO TONE
20U	PACIFIC BLUE(M1)	
24U	REGATTA BLUE(M1)	
40U	SHERWOOD GREEN(M1)	
60U	BRIGHTON GOLD(M2)	
61U	MOONSTON BEIGE(M2)	
70U	RED ROCK(M1)	
86U	STORM GREY(M2)	
92U	POLY SILVER(M2)	

S = SOLID

M1 = MICA

M2 = METALLIC

()

2002

11U	GALAXY WHITE	GREY (821)
32U	PASTEL BLUE	
33U	SPORTS BLUE	
34U	MODERN GREEN	
48U	BRILLIANT GREEN	
49U	YELLOW GREEN	
52U	HIGHWAY GREEN	
67U	GOLDISH BEIGE	
73L	SUPER RED	
77U	ACTIVE RED	
87U	PEARL BLACK	
95U	DOVE SILVER	

/ II

()

1997 ~ 1998

		(821)
11U	GALAXY WHITE(,S)	GREY()
21U	AZURITE BLUE(,M1)	
27U	VIOLET BLUE()	
42U	DEEP BLUSH GREEN()	
43U	LIGHT EVERGREEN(,M2)	
52U	HIGHWAY YELLOW()	
73L	SUPER RED()	
74U	SPINEL RED(,M1)	
81U	STREAMLINE GREY(,M1)	
83L	GRANADA BLACK()	
92U	POLY SILVER()	

(S) = SOLID
(M1) = MICA
(M2) = METALLIC

1999 (T150)

		(821)	(801)
11U	GALAXY WHITE(,S)	GREY ()	BLACK ()
21U	AZURITE BLUE(,M1)		
42U	DEEP BLUSH GREEN(,M1)		
43U	LIGHT EVERGREEN(,M2)		
52U	HIGHWAY YELLOW()		
56U	LEMON YELLOW(,S)		
73L	SUPER RED(,S)		
74U	SPINEL RED(,M1)		
81U	STREAMLINE GREY(,M1)		
83L	GRANADA BLACK(,M1)		
92U	POLY SILVER(,M2)		

(S) = SOLID
(M1) = MICA
(M2) = METALLIC

-) 1. (801) :
2. 56U

/ II

()

2000 (T150)

		(821)	(801)
11U	GALAXY WHITE(,S)	GREY ()	BLACK ()
21U	AZURITE BLUE(,M1)		
42U	DEEP BLUSH GREEN(,M1)		
43U	LIGHT EVERGREEN(,M2)		
52U	HIGHWAY YELLOW()		
56U	LEMON YELLOW(,S)		
73L	SUPER RED(,S)		
81U	STREAMLINE GREY(,M1)		
83L	GRANADA BLACK(,M1)		
92U	POLY SILVER(,M2)		
60U	BRIGHTON GOLD(,M2)		
70U	RED ROCK(,M1)		

(S) = SOLID

(M1) = MICA

(M2) = METALLIC

) 60U,70U 가

/ II

()

10L	CASABLANKA WHITE()	221 :
25U	COBALT BLUE()	-PURPLE
29U	SKY BLUE()	421 :
46U	LEAF GREEN()	-BROWN
51U	GOLDEN YELLOW()	201 :
73L	SUPER RED()	-BLUE
75U	ORANGE COPPER()	231 :
85U	DARK SAPPHIRE()	-DARK PURPLE
92L	POLY SILVER()	
38U	CYBER GREEN()	
39U	GREEN-GREY,METAL()	
57U	ORANGE()	
63U	STAIN BEIGE()	
92U	POLY SILVER-METAL()	

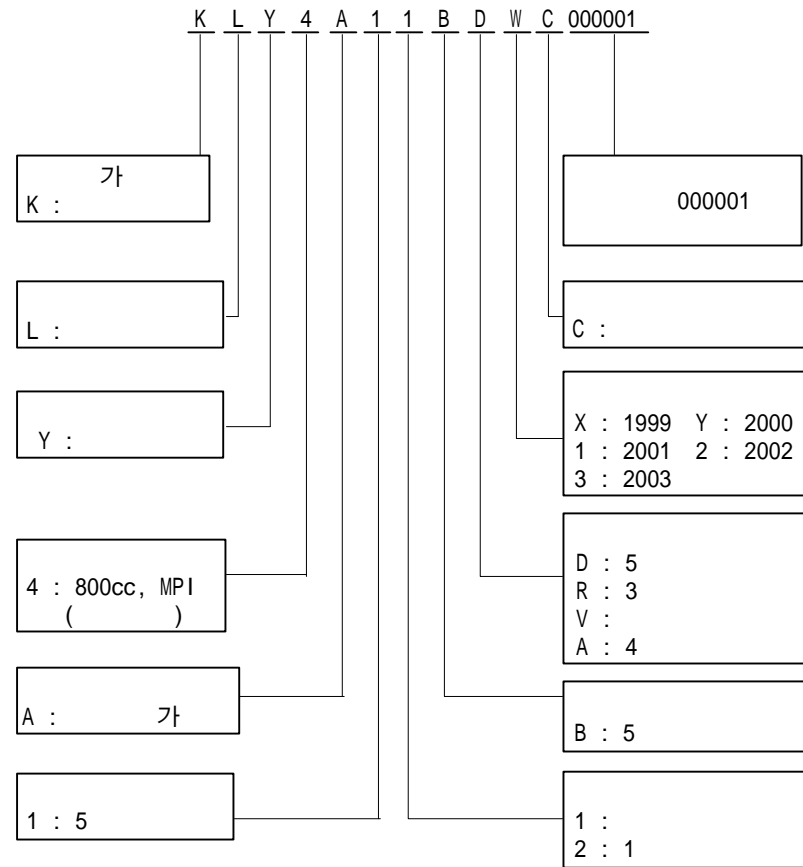
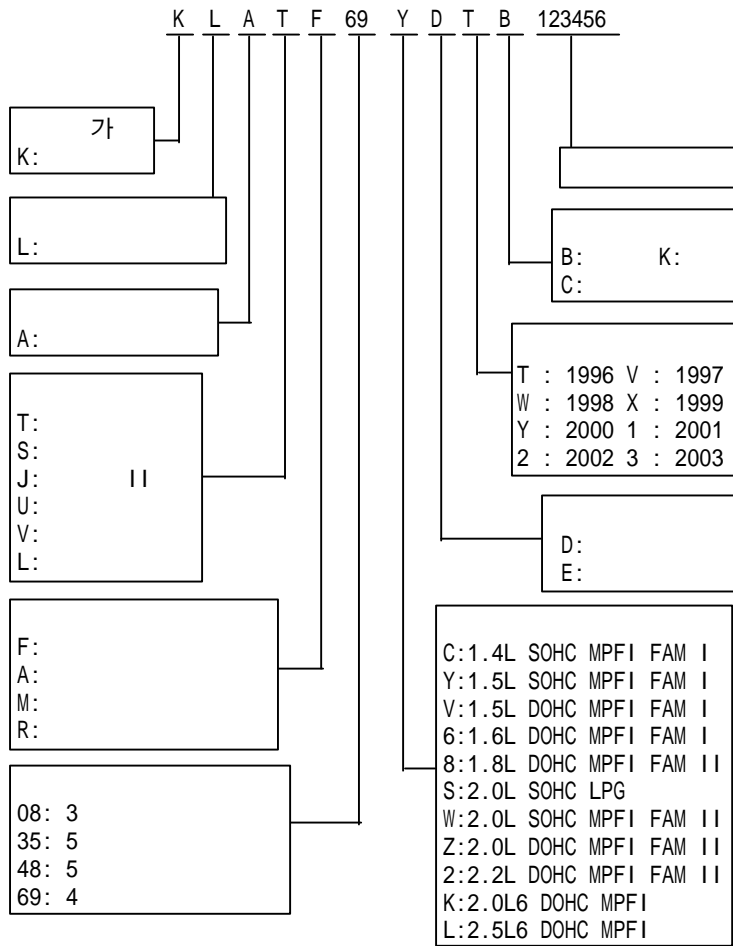
M		M	
A		A	

) * :
 * & ABS ABS가
 * / ABS ABS
 / : 가
 LH :
 RH :
 :
 :
 ,
 ,

) 1. : 'B'
 ~ B012345() : B012345
 B012346 ~ () : B012346
 2. : 'E'
 ~ E012345() : E012345
 E012346 ~ () : E012346
 3. : 'T'
 ~ T012345() : T012345
 T012346 ~ () : T012346
 4. : 'D'
 ~ D19981231() : 1998 12 31
 D19990101 ~ () : 1999 01 01
 :
 :
 :
 PNC () :
 A/S

V. (V.I.N)

/ / / / II/ /



DAEWOO MOTOR CO.,LTD

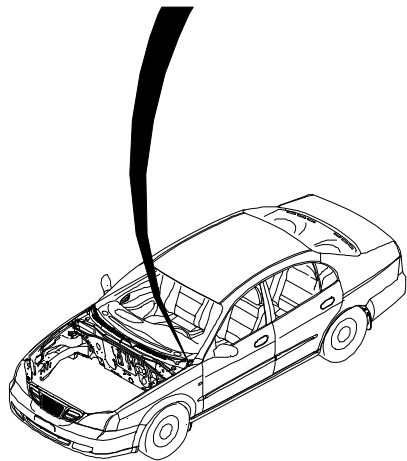
○ TYPE APP. NO. ○

VEH. ID NO.

MODEL

ENGINE TYPE

BODY COLOR



DAEWOO
DAEWOO MOTOR CO.,LTD

ENGINE TYPE

○ TA NO ○

MODEL

VIN

KLDUA67EWK116387

COLOR



DAEWOO

DAEWOO MOTOR CO.,LTD.

VEHICLE IDENTIFICATION NO.

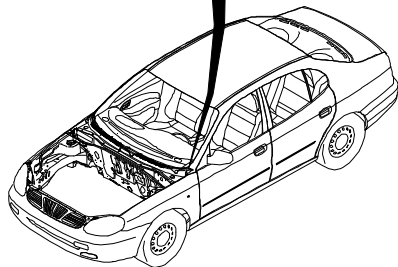
K L A V F 69 Z D 1 B 123456

TYPE APPROVAL NO.

MODEL

ENGINE TYPE

BODY COLOR



||

DAEWOO

DAEWOO MOTOR CO.,LTD.

VEHICLE IDENTIFICATION NO.

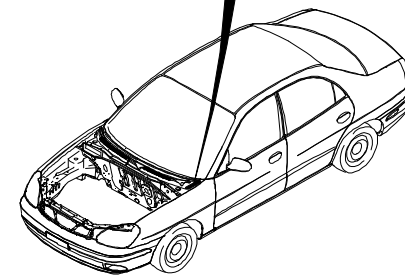
K L A J F 69 V D X K 123456

TYPE APPROVAL NO.

MODEL

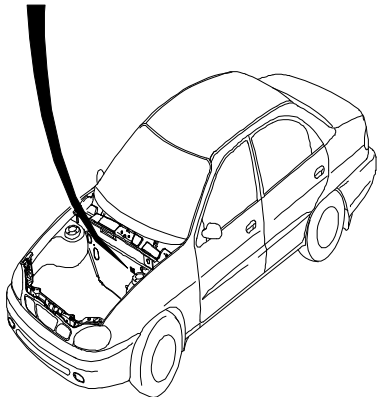
ENGINE TYPE

BODY COLOR



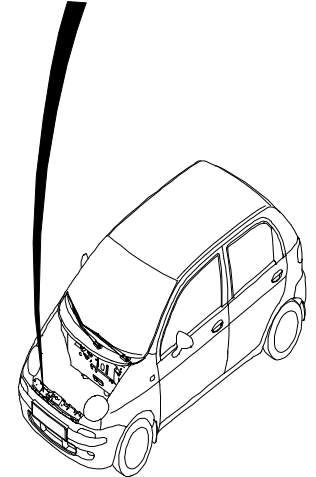
/ II

DAEWOO DAEWOO MOTOR CO.,LTD.	
VEHICLE IDENTIFICATION NO.	
K L A T F 69 Y D T B 123456	
TYPE APPROVAL NO.	
MODEL	
ENGINE TYPE	
BODY COLOR	

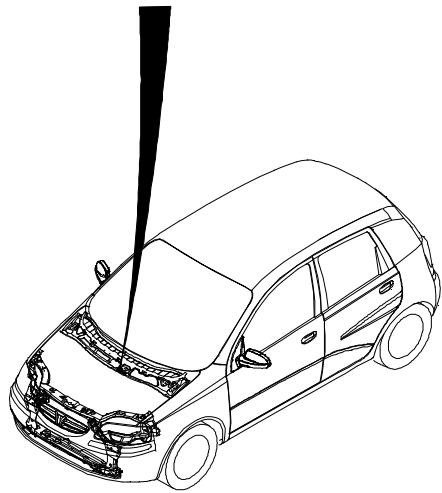


/ II

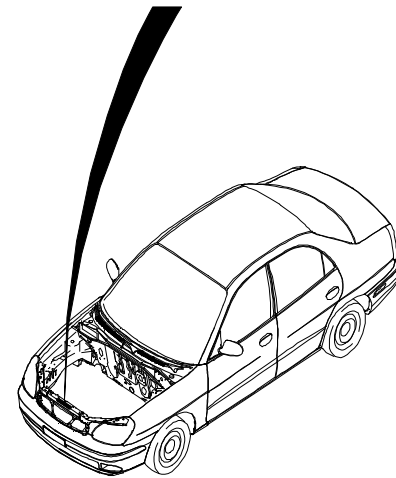
DAEWOO DAEWOO MOTOR CO., LTD.	
(MODEL)	Y4A11
(TYPE APPROVAL NO.)	1-XXXX-XXX
(VEHICLE IDENTIFICATION NO.)	K L Y 4 A 1 1 B D W C 0 0 0 0 0 1
(ENGINE TYPE)	F8CV
(BODY COLOR)	80L



K L A S F 69 Y D 2 B 123456



K L A N F 19 V D 2 K 123456



VI.

FAMILY [I] 1

A 15 D M N 123456 B

-)
 1.3 SOHC
 -- A13SMS 123456B
 1.5 SOHC
 -- A15SMS 123456B
 1.5 DOHC
 -- A15DMS 123456B
 1.6 DOHC
 -- A16DMS 123456B

TYPE
 A : IN LINE
 V : V TYPE

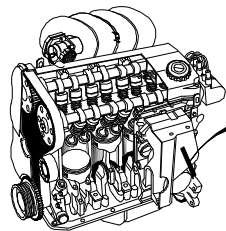
 13 : 1.3L
 15 : 1.5L
 16 : 1.6L

 D : DOHC
 S : SOHC

 E : MPI
 L : LPG

 N : 9.0<N<9.5
 S : 9.5<S<10.0

B :



A16DMN 123456B

FAMILY [I] 2

F 18 S 2 123456 K

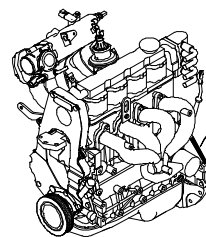
TYPE
 F : FAM I

 18 : 1.8L

 D : DOHC
 S : SOHC

 2 : MPI

 K :



F18D2 123456K

FAMILY [II]

C 20 S E D 123456

-)
 1.8
 2.0 LPG
 -- C20NL 123456
 2.0 DOHC
 -- C20SED 123456

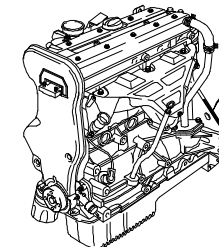
C :
 X :
 T :

 18 : 1.8L
 20 : 2.0L
 22 : 2.2L

 N : SOHC
 S : DOHC

 E : MPI
 L : LPG

 D :



C20SED 123456

XK

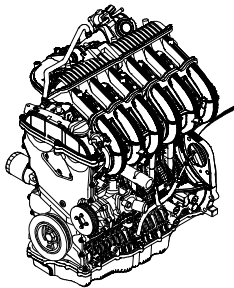
X 20 D 1 123456 K
| | | | | | | |

TYPE
X : XK-6 2.0/2.5

20 : 2.0L
25 : 2.5L

D : DOHC
S : SOHC

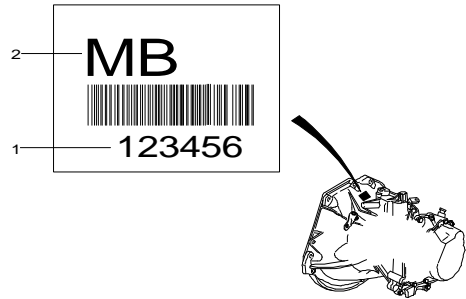
K : KOREA



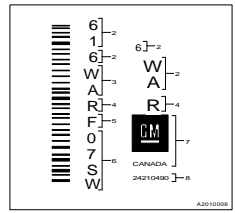
X20D1 123456K

VII.

[Empty box]

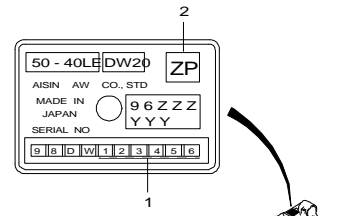


(1) [GMPT]

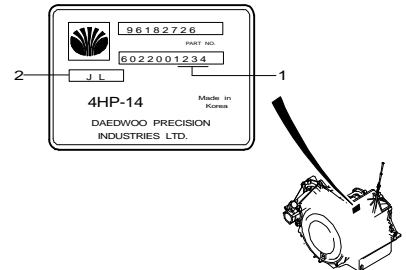


- 1 Assembly plant (Windsor, Canada)
- 2 Model Year (1996)
- 3 Broadcast Code
- 4 Model Name (4T40E)
- 5 Update Level
- 6 Sequential Number
- 7 Manufacturer
- 8 Part Number

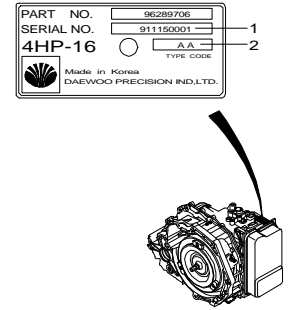
(2) [AISIN]



(3) [ZF14]



(4) [ZF16]



IX. OPTION CODE

CODE	DESCRIPTION	CODE	DESCRIPTION	CODE	DESCRIPTION	CODE	DESCRIPTION
&	TOGETHER WITH	ATE	SEAT COVERING-FULL CLOTH,1	C99	LAMP-ROOM,FRONT	FLG	HEAD LAMP-PROJECTION TYPE
-	EXCEPT	ATM	SEAT COVERING-COMFORT DLX	CAL	CAR ALARM & ANTI-THEFT	FLH	HEAD LAMP-MFR TYPE
/	OR	ATP	ANTI-THEFT WIRING PROVISION	CF6	SUN ROOF,POWER	FQ4	AXLE RATIO-3.72
60I	BEIGE-INTERIOR	AU3	ELECTRIC DOOR LOCKING	CLA	CLUTCH-AUTO	FTP	FUEL TANK-PLASTIC
61I	BEIGE-INTERIOR	AU7	TAILGATE OPENING-C/REMOTE	CN3	CANISTER-0.85	FTQ	FUEL TANK-PLASTIC,TURBIN
85I	GREY-INTERIOR	AWL	BELT-FRT,L/R,WLR	CN4	CANISTER-1.5	FW5	FLUSH WHEEL COVER,14"
A01	WINDSHIELD GLASS-TINTED	AYT	HEADREST-UP/DOWN & TILT	CN5	CANISTER-1.85	G39	AXLE RATIO-3.944
A02	WINDSHIELD-2 PIECE,UPR TINTED	B0	COOLING FAN-W/O AIR-CON	CRS	LAMP-ROOM,FRONT(SUNROOF)	G41	AXLE RATIO-4.176
A03	WINDSHIELD-2 PIECE,CLEAR	B06	PILLAR TRIM-A,B LOWER	D18	ARM REST-STD	GM7	AXLE RATIO-3.910
A22	WINDSHIELD GLASS-CLEAR	B07	PILLAR TRIM-A/B/C,B LOWER	D31	MIRROR-INSIDE,TILT,RR VIEW	GS4	AXLE RATIO-3.545
A30	NON POWER-WINDOW	B10	SIDE TRIM-LUG ROOM,PLASTIC	D33	MIRROR-REMOTE CONTROL,DRIVER	GS7	AXLE RATIO-3.979
A31	POWER OPERATING WINDOW(FR+RR)	B11	SEAT BACK POCKET	D35	MIRROR-INSIDE,CONVENTIONAL	GSA	GAS SHOCK ABSORBER
A32	POWER OPERATING WINDOW(FR)	B23	COVER-PARK BRAKE LEVER,RR	D39	MIRROR-REMOTE	I34	MIRROR-OUTSIDE,MAN STD
A34	WINDOW-MANUAL OPERATED,FRT	B3	AIR-CON	D40	MIRROR-HEATING FUNCTION	JB3	BRAKE DISC-VENT TYPE,13 INCH
A66	WINDOW-POWER(FRT&RR), 1TOUCH	B30	FLOOR COVERING-CARPET STD	D69	PARCEL SHELF-REAR,W/STRING	JB4	BRAKE DISC-VENT TYPE,14 INCH
A81	TRUNK LID OPENING-REMOTE CABLE	B39	FLOOR COVER-CARPET	D80	LOAD COMPARTMENT-SIDE	JB5	BRAKE DRUM
A82	TAILGATE OPENING-KEY TURN	B41	FLOOR COVER-VINYL	DD4	MIRROR-ELECTRIC,PASSENGER SIDE	JB6	BRAKE DISC
AAC	W/HEIGHT ADJUST-SEAT BELT	B46	FLOOR COVER-HEEL PAD	DHC	CHROME COATING INSIDE DOOR	JB9	BRAKE DISC-VENT II
ABF	DUAL AIR BAG SYSTEM	B58	FLOOR CARPET-DELUXE	DM0	MIRROR-MANUAL FOLDING,	JL9	ANTI- LOCK BREAK SYSTEM
AG1	POWER SEAT, DRIVER SIDE-LEATHER	B59	FLOOR MAT HOOK	DM6	MIRROR-MANUAL FOLDING, MANUAL	JTC	TRACTION CONTROL SYSTEM
AG4	SEAT-LH,HEIGHT ADJUST,MANUAL	B62	MOLDING-MOLDED COLOR	DM7	MIRROR-MANUAL FOLDING,	K30	CRUISE CONTROL
AGD	HEIGHT ADJUSTABLE, MANUAL DUAL	B64	MOLDING-ACCENT	DM8	MIRROR-MOLDED COLOR	K91	ALTERNATOR-65A
AJ3	AIR BAG SYSTEM-DRIVER SIDE	BB3	DOOR POCKET-DRIVER	DM9	MIRROR-BODY COLOR	L84	1.8 DOHC ENGINE(M.P.I)
AJ7	AIR BAG SYSTEM-PASSENGER	BH3	HANDLE-DOOR,BLACK	DP0	MIRROR-MANUAL FOLDING,	L88	2.0 DOHC ENGINE(M.P.I)
AKW	BELT-FRONT PASSENGER SIDE,WLR	BH4	HANDLE-DOOR,BODY COLOR	DS1	MIRROR-O/S DR MAN REMOTE	L90	2.2 DOHC ENGINE(M.P.I)
AMC	SEAT-RR,FOLDING W/HEADREST	BY9	HEADLINING-FORMED CLOTH	DSL	SUNSHADE-W/MIRROR ILLUMINATION	LQ2	ENG-3 CYL 2V 0.8 SOHC,MPI
AP1	ASSIST GRIP-3EA	C15	AIR CONDITIONER(ATC)	DSP	EQUALIZER-DIGITAL SIGNAL	M40	TRANSMISSION-AUTO,3 SPEED
AP3	ASSIST GRIP-REAR	C20	VALIABLE SPEED WIPER	DTR	DAY TIME RUNNING LIGHT	M79	TRANSAXLE-M/T 5 SPD(WIDE/RATIO)
AP5	SEAT-REAR,ARM REST W/O DEPOSIT	C22	WIPER-W/O INTERMITTENT	EGR	EXHAUST GAS RECIRCULATION	M85	TRANSAXLE-M/T 5 SPD(MEDIUM/RATIO)
APC	BELT-FRONT,CO-DRV	C25	WASHER & WIPER-BACK WINDOW	EMB	ENGINE IMMOBILIZER	M89	TRANSAXLE-M/T 5 SPEED(CLOSE
APD	BELT-FRONT,DRV SIDE(PRETENSIONER)	C34	AIR FILTER	EY2	ROOF RACK	MG4	TRANSAXLE-M/T 5 SPD(CLOSE RATIO)
APP	BELT-SEAT,PRETENSIONER,FRT	C35	HEATER REAR LEG	FAC	AUTO TEMPERATURE DISPLAY("C)	ML9	TRANSAXLE-AUTO 4 SPEED(ZF T/A)
APW	BELT-FRONT DRIVER SIDE,WLR	C46	HEATER	FAF	AUTO TEMPERATURE DISPLAY("F)	N33	TILTABLE STEERING COLUMN
AQ3	FRONT SEAT-RECLINING(DIAL) &	C50	REAR WINDOW DEFFOGER-W/TIMER	FAW	WARNING TRIANGLE(DEALER OPTION)	N40	POWER STEERING
AS7	BELT-FRT,3 POINT ELR,HYBRID	C54	HEATING MAT, DRIVER	FC0	FUEL CUT OFF SWITCH	N51	MANUAL STEERING
ASB	SEAT BACK POCKET	C55	REAR WINDOW	FE2	ELECTRONIC CONTROL SUSPENSION	N55	STEERING WHEEL-WO/AIR BAG
ASC	SEAT BACK POCKET-CO DRIVER	C58	HEATING MAT, PASSENGER	FL1	HEAD LAMP-ECE TYPE,LHD	N58	STEERING WHEEL-W/AIR BAG
ASW	BELT-FRT,3 PNT DR/ELR, CO DR/WLR	C59	UNCOMPLETED AIR CONDITIONER	FL3	HEAD LAMP-ECE TYPE,RHD	N76	WHEEL 5JX13(STEEL)
ATC	SEAT COVERING-SUPER DELUXE	C60	AIR CONDITIONER	FL7	LAMP-REAR COMB,SAE	NC2	TRIM RING-MUFFLER
ATD	SEAT COVERING-FULL CLOTH	C95	LAMP-ROOM,CENTER	FL8	LAMP-REAR COMB,ECE	NET	NET-LUGGAGE

CODE	DESCRIPTION	CODE	DESCRIPTION	CODE	DESCRIPTION	CODE	DESCRIPTION
NM1	ON BOARD REFUELING VAPOR RECO	TD4	TRIM-DOOR ,SUPER DLX	UT5	ANTENNA-POWER(REAR)	XM3	LUMBAR SUPPORT-PASSENGER SEAT
NP5	STEERING WHEEL-LEATHER COVER	TD5	DOOR TRIM-SIDE IMPACT PAD	UT8	ANTENNA-ROOF	XRM	RUMANIA-MANDATORY
P11	FLUSH WHEEL COVER-14"	TD6	TRIM-DOOR ,ULTRA DLX	UXA	SPEED SENSITIVE POWER STEERING	XTK	TURKEY-MANDATORY
P13	FLUSH WHEEL COVER-13"	TD7	DOOR TRIM-PART FABRIC	V85	FIRE EXTINGUISHER-BRACKET	XTW	TAIWAN-MANDATORY
P21	FLUSH WHEEL COVER,14"	TLC	TIRE BRAND-LOCAL	VA5	RADIATOR-STD	XUK	UK-MANDATORY
PA5	CAP-HUB	TLD	TRUNK LID HANDLE-CHROME COATING	VA6	RADIATOR-HEAVY DUTY	XVN	VAN PACKAGE
PG1	WHEEL 6. 0JX15(STEEL)	TN6	BATTERY-55AH	VB2	BUMPER-BODY COLOR	XYM	YEMEN-MANDATORY
PG4	WHEEL 5.1/2JX14(ALLOY)	TNA	BATTERY-35AH	VC3	EMBLEM-HOOD		
PG9	WHEEL 6. 0JX15(ALLOY)	TNH	BATTERY-55AH,HIGH	VC7	EMBLEM-TAILGATE,NORMAL		
PM1	WHEEL 13 X 4.5J,STEEL	TR3	LAMP-REAR COMB,KOREA	VH4	MUD GUARD		
PQ2	WHEEL 13 X 5J,ALLOY	TRA	LAMP-REAR,ECE W/FOG LAMP	VN1	VIN-COMMON		
PQ3	WHEEL 13 X 4.5J,ALLOY	U04	HORN-SINGLE	VN2	VIN-NTA/WVTA		
PX8	WHEEL 5.1/2JX14(STEEL)	U14	DIGITAL CLOCK	VT1	BUMPER-5 MPH		
QRF	TIRE 205/60 R15	U32	INSTRUMENT CLOCK-DIGITAL	VT2	BUMPER-2.5 MPH		
QRX	TIRE 195/70 R14	U37	CIGAR LIGHTER	VT3	BUMPER-FRT 5MPH,RR 2.5MPH		
QTF	TIRE-155 SR13	U58	RADIO-AM/FM STEREO	W3S	LETTERING - SX		
QTJ	TIRE-175/70 R13	U61	INDICATOR-DOOR OPEN	W3T	LETTERING - CDX		
QUS	TIRE-185/60 R14	U67	DAY TIME RUNNING LIGHT	W4L	LETTERING-CD		
R83	OCTANE NO.83	U73	ANTENNA-MANUAL	W4M	LETTERING-D' ART		
R87	OCTANE NO.87	U75	ANTENNA-POWER	W4V	LETTERING - SE		
R91	OCTANE NO.91	U83	SPEAKER-REAR,DLX	W6C	TRIM-CLOTH,DLX		
R95	OCTANE NO.95	U85	DIGITAL CLOCK W/OUTSIDE	W6E	TRIM-CLOTH,DLX		
RC2	REMOTE CONTROL S/W-STRG	U93	SPEAKER-6EA	W6G	TRIM-CLOTH,SUPER DLX		
RDS	RADIO DATA SYSTEM-CASSETTE	UA9	HORN-80,NON E-MARK	W6H	TRIM-CLOTH,ULTRA DLX		
SKL	LEATHER T/M KNOB(A/T)	UB4	WARNING BUZZER-HEADLAMP	W6W	TRIM-CLOTH,STD		
SU3	SUSPENSION,STD	UC0	SPEEDOMETER(KILOMETER/H)	W8K	CASSETTE(25WX4CH) & COMPACT DISC		
SU4	SUSPENSION,HEAVY	UC1	SPEEDOMETER(MILE/H)	W9M	WHEEL-BLACK		
SU7	SUSPENSION-ANTI CORROSION	UE1	EQUALIZER	W9U	WHEEL-SILVER		
T01	LAMP-LICENSE PLATE,ECE	UIP	ULTRASONIC INTERIOR PROTECTION	WGM	METALLIC GRAIN		
T11	LICENSE PLATE,SAE	UN1	CASSETTE-AM/FM ETR,STD	WGR	WOOD GRAIN TRIM		
T26	LAMP-TURN SIGNAL,ECE	UN6	CASSETTE-AM/FM ETR,H/D	XA1	SOUTH AFRICA-MANDATORY		
T40	LAMP-REAR,ECE W/O FOG LAMP	UNB	RADIO BLANK (with W/HARNES)	XAF	AFRICA-MANDATORY		
T45	REAR SPOILER(BLACK)	UNG	COVER-AUDIO INSTAL & FRAME	XAL	ALGERIA-MANDATORY		
T93	HIGH LEVEL STOP LAMP	UP1	CD CHANGER	XCA	EQUIPMENT-COLD AREA		
T96	LAMP-FRONT FOG	UR5	ASHTRAY-FRONT	XCE	CHILE-MANDATORY		
T97	FOG LAMP-INTEGRATED IN BUMPER	UR8	ASHTRAY-W/LAMP	XCH	CHINA-MANDATORY		
T98	LAMP-REAR FOG	US6	SPEAKER,FRT-STD	XEE	EQUIPMENT-EAST EUROPE		
TA0	CHILD SEAT TETHER ANCHORAGE	US8	SPEAKER-REAR,STD	XFR	FRANCE-MANDATORY		
TCP	TRAILER PACKAGE(DEALER OPTION)	UT3	ANTENNA-BACK GLASS	XJR	JORDAN-MANDATORY		
TD2	TRIM-DOOR,DLX	UT4	ANTENNA-MANUAL(REAR)	XM2	LUMBAR SUPPORT-DRIVER SEAT		

VII. ¾¾Ç

¾¾	¾¾	¾¾	¾¾	¾¾	¾¾
1ST	FIRST	EXPN	EXPANSION	RAD	RADIATOR
2ND	SECOND	EXTN	EXTENSION	RECL	RECLINER,-ING
3RD	THIRD	F/PNL	FLOOR PANEL	REF	REFRIGERANT
A	ASSEMBLY	FDG	FEEDING	REINF	REINFORCEMENT
A/C	AIR CONDITIONER, -ING	FLR	FLOOR	REV	REVERSE
A/T	AUTO TRANSMISSION	FRT	FRONT	RKE	REMOTE KEY(ENTRY SYSTEM)
ABS	ANTI LOCK BRAKE SYSTEM	FWD	FORWARD	RR	REAR
ACCEL	ACCELERATOR	G/S	GEAR SHIFT	RTN	RETURN
AL	ALUMINIUM	HARN	HARNES	S/ABS	SHOCK ABSORBER
ATAS	ANTI THEFT ALARM SYSTEM	HYD	HYDRAULIC	S/BACK	SEAT BACK
ATC	AUTO TEMPERATURE CONTROL	I/MANIF	INTAKE MANIFOLD	S/BELT	SEAT BELT
AUX	AUXILIARY	I/P	INSTRUMENT PANEL	S/COL	STEERING COLUMN
BTSI	BRAKE TRANSMISSION SHIFT INTERLOCK	I/S	INSIDE	S/W	SWITCH
C/G	CROSS GROOVE	IACV	IDLE AIR CONTROL VALVE	SDM	SENSING & DIAGNOSTIC MODULE
C/MBR	CROSS MEMBER	IGN	IGNITION	SEC2	SECONDARY
C/V	CONSTANT VELOCITY	INCL	INCLUDING	SHF	SHAFT
CATAL CONV	CATALYTIC CONVERTER	INL	INLET	SIR	SUPPLEMENTAL INFLATE RESTRAINT
CD	COMPACT DISC	INR	INNER	SOL	SOLENOID
CLU	CLUTCH	INST	INSTRUMENT	STD	STANDARD
CM/SHF	CAM SHAFT	INT	INTAKE	STRG	STEERING
CMPR	COMPRESSOR,-SION	INTER	INTERMEDIATE	SUCT	SUCTION
CNSL	CONSOLE	L/COMPT	LOAD COMPARTMENT	SUPT	SUPPORT,-ING
COMB	COMBINATION	L/PLATE	LICENSE PLATE	SYN	SYNCHRONIZER
COMPL	COMPLETE	LONGI	LONGITUDINAL	T/A	TRANSAXLE
COMPT	COMPARTMENT	LWR	LOWER	T/BODY	THROTTLE BODY
CONN	CONNECTING,-TOR,-NECT	M/T	MANUAL TRANSMISSION	T/GATE	TAIL GATE
CONT	CONTROL	MANIF	MANIFOLD	T/LID	TRUNK LID
CONV	CONVERTER	MAP	MANIFOLD AIR PRESSURE	T/M	TRANSMISSION
CPS	CRANK POSITION SENSOR	MAT	MANIFOLD AIR TEMPERATURE	T/P	TRI POT
CR/SHF	CRANK SHAFT	MBR	MEMBER	T/SIG	TURN SIGNAL
CTR	CENTER, -RAL	MOD	MODULE	TCC	TORQUE CONVERTER CLUTCH
CUSH	CUSHION	MT	MOUNTED,-ING	TCM	TRANSMISSION CONTROL MODULE
CYL	CYLINDER	NEU	NEUTRAL	TEMP	TEMPERATURE
DIFF	DIFFERENTIAL	NSBU	NEUTRAL START BRAKE UNIT	THER	THERMAL
DIR	DIRECT,-TION	O/S	OUTSIDE,OVERSIZE	TILT	TILTABLE
DIS	DIRECT IGNITION SYSTEM	OBD	ON BOARD DIAGNOSTIC	TRK	TRUNK
DISTR	DISTRIBUTOR,-TION	OPG	OPENING	TXV	THERMAL EXPANSION VALVE
DLX	DELUXE	OTLT	OUTLET	U/S	UNDER SIZE
DMP	DAMPING,-PER	OTR	OUTER	UPR	UPPER
DR	DOOR	P/BRAKE	PARKING BRAKE	VENT	VENTILATED,TION,-TOR
DRL	DAY TIME RUNNIN LIGHT	P/STRG	POWER STEERING	VGIS	VARIABLE GAS INDUCTION SYSTEM
E/MANIF	EXHAUST MANIFOLD	P/WDO	POWER WINDOW	W/	WITH
ECM	ELECTRONIC CONTROL MODULE	PARK	PARKING	W/H	WHEEL HOUSE
ECU	ELECTRONIC CONTROL UNIT	PASS	PASSENGER	W/HARNES	WIRING HARNESS
EGR	EXHAUST GAS RECIRCULATION	PCB	PRINTED CIRCUIT BOARD	W/SHIELD	WINDSHIELD
ELEC	ELECTRIC,-CAL	PNL	PANEL	W/STRIP	WEATHER STRIP
ENG	ENGINE	PRIM	PRIMARY	WDO	WINDOW
ENGY	ENERGY	PROTV	PROTECTIVE	W/O	WITHOUT
EXH	EXHAUST	PWR	POWER		