

## INTRODUCTION

This electronic parts catalog provides serviceable parts information for the Daewoo Motor "**LEGANZA/TACUMA/NUBIRA/LANOS/LACETTI/KALOS/MATIZ**".

All data and specifications contained in this publication are based on the latest product information available at the time of print.

In order to make the best use of this electronic parts catalog, please be sure to read "**the GENERAL INFORMATION**" carefully.

**GM Daewoo Auto & Technology**  
Parts Engineering Team

## **GENERAL INFORMATION**

- I. GENERAL VIEW**
- II. MODEL & OPTION**
- III. TABLE OF COLOR CODE**
- IV. EXPLANATION OF CATALOG COMPOSITION**
- V. CONSTRUCTION OF VEHICLE IDENTIFICATION NUMBER**
- VI. ENGINE IDENTIFICATION NUMBER**
- VII. TRANSAXLE IDENTIFICATION NUMBER**
- VIII. TABLE OF OPTION CODE**
- IX. ABBREVIATIONS**

# I. GENERAL VIEW



LEGANZA



TACUMA



LACETTI



NUBIRA



KALOS



MATIZ



LANOS  
4 DOOR NOTCHBACK



LANOS  
3 DOOR HATCHBACK



LANOS  
5 DOOR HATCHBACK

## MODEL & OPTION

### LEGANZA

#### 1. MODEL

T/A	LEVEL
M or A	I / II

##### T/A (TRANSAXLE TYPE)

M	MANUAL TRANSAXLE
A	AUTOMATIC TRANSAXLE
.	COMMON

##### LEVEL (TRIM LEVEL)

I	SX	2.0 SOHC(2.0/2.2 DOHC)
II	CDX	2.0 DOHC(2.2 DOHC)
.	.	NOT APPLIED

NOTE : Please be sure to read "EXPLANATION OF CATALOG COMPOSITION" to find out the details on "LEVEL" column.

#### 2. OPTION

CODE	DESCRIPTION	LEVEL	
		I	II
L90	2.2DOHC ENGINE(M.P.I)	O	O
ML9	4 SPEED AUTOMATIC T/A(ZF)	O	O
ML4	4 SPEED AUTOMATIC T/A(AISIN)	O	O
PG9	ALLOY WHEEL	O	B
JL9	ANTI LOCK BRAKE SYSTEM	O	O
JTC	TRACTION CONTROL SYSTEM	.	O
NP5	LEATHER STEERING WHEEL	O	O
C19	UNCOMPLETED AIR CONDITIONER, AUTO	O	O
C60	AIR CONDITIONER	O	O
C15	FULL AUTO AIR CONDITIONER	O	O
C54	HEATING MAT-DIRVER	O	O
C58	HEATING MAT-PASSENGER	O	O
AJ3	AIR BAG-DRIVER	O	B
AJ7	AIR BAG- PASSENGER	O	O
CAL	CAR ALARM	O	O
UIP	ULTRASONIC, W/CAR ALARM	O	O
K30	CRUISE CONTROL	O	O
CF6	SUN ROOF-POWER	O	O
W6K	RADIO/CASSETTE W/CDP	O	O
UP1	CD CHANGER	O	O

O : OPTION  
 B : BASE  
 . : NOT APPLIED

# TACUMA

## 1. MODEL

BODY	LEVEL		ENGINE	TRANSAXLE
	I	S E		
5DOOR M P V	II	S X	1.6 DOHC / 1.8 SOHC	MANUAL : 5 SPEED
	III	CDX	2.0 DOHC	AUTOMATIC : 4 SPEED

\* MPV : Multi Purpose Vehicle

## 2. OPTION

CODE	DESCRIPTION	TRIM LEVEL		
		SE	SX	CDX
MM9	4-SPEED AUTOMATIC T/A(ZF16)	O	O	O
PG9	ALLOY WHEEL,6Jx15	.	O	O
ARD	REMOTE CONTROL S/W,ON S/WHEEL	.	O	O
JL9	ANTILOCK BRAKE SYSTEM	O	O	O
C60	AIR CONDITIONER	O	O	O
C59	UNCOMPLETED A/CONDITIONER	O	O	O
C15	AIR CONDITIONING-FULL ATC	.	O	O
U63	OUT SIDE TEMPERATURE DISPLAY	.	O	O
C34	AIR FILTER	O	O	O
PG4	ALLOY WHEEL,5.5Jx14	O	O	.
AJ3	AIR BAG SYSTEM(DRIVER SIDE)	O	O	O
ABF	AIR BAG SYSTEM(DUAL)	O	O	O
A88	2nd ROW SEAT(3 SEPARATE TYPE)	.	O	O
CAL	REMOTE KEYLESS ENTRY SYSTEM	.	O	O
UIP	ULTRASONIC INTERIOR PROTECTION	.	O	O
FAK	FIRST AID KIT PROVISION	O	O	O
FAW	WARNING TRIANGLE PROVISION	O	O	O
UZ4	WARNING DEVICE(KEY REMINDER)	O	O	O
TCP	TRAILER CONNECTION PROVISION	O	O	O
WCC	CD CHANGER (FOR AUDIO)	O	O	O

O : OPTION  
 B : BASE  
 . : NOT APPLIED

# LACETTI

## 1. MODEL

BODY	LEVEL			ENGINE	TRANSAXLE
	I	SE	BS		
4 Door Notchback	II	SX	LS	1.6 DOHC	5 SPEED M/T
	III	CDX	LT	1.6 DOHC 1.8 DOHC	4 SPEED A/T, (AISIN)
				1.8 DOHC	4 SPEED A/T, (ZF)

NOTE : Please be sure to read "the EXPLANATION OF CATALOG COMPOSITION" to find out the details on "the LEVEL COLUMN"

## 2. OPTION

CODE	DESCRIPTION	TRIM LEVEL		
		I	II	III
L44	1.6 DOHC 4 CYL MPI (F16D)	B	B	.
L84	1.8 DOHC 4 CYL MPI (H18D)	.	O	B
XSM	SIEMENS	B	B	.
XDP	DELPHI	.	O	B
ML4	81-40LE 4SPEED A/T, ELEC. (AISIN)	O	O	.
MM9	4HP16E 4SPEED A/T, ELEC. (ZF)	.	O	O
JB5	REAR - DRUM	O	O	O
JL9	ABS	O	O	O
JTC	TCS + ABS	.	O	O
BS7	BOOSTER - 7" + 8" TANDEM	O	O	.
N33	TILTABLE - CONTINUOUS & LOWER TILT'G	O	B	.
N37	TILTABLE & TELESCOPIC	.	O	B
N58	STEERING - WHEEL(4-SPK), W/ SIR	O	O	O
C60	MANUAL AIR CONDITIONING	O	O	O
C15	A/C FULL ATC (W/ O/SIDE TEMP. DISPLAY)	.	O	O
C34	AIR FILTER	O	O	O
C35	REAR HEATING DUCT	O	O	O
CND	CARD HOLDER, INSTRUMENT PANEL	O	O	O
XLP	LEATHER PACKAGE	.	O	O
WGR	WOOD GRAIN	.	O	O
RTS	TRIM PANEL INNER - TRUNK LID	O	O	O
AAC	HEIGHT ADJUST - FRONT	O	B	B
AU3	LOCK - DOORS, ELECTRIC	O	B	B
UL1	CONSOLE	O	B	B
U93	SPEAKER (6EA)	.	O	B
UX5	SPEAKER (8EA - STD)	.	O	O
VT3	BUMPER : FRONT - 5MPH, REAR - 2.5MPH	O	O	O
CF6	SUN OOF - SLIDE & TILT POWER (1-TOUCH)	O	O	O
BS2	BODY SIDE MOLDING - BODY COLOR	O	B	B
BH4	MUD GUARD - FRONT & REAR	O	O	O

# NUBIRA

## 1. MODEL

ENG	T/A	BODY	LEVEL
V / 6 / 8 / W / Z	M / A / G / Z	4N / 5H / 5W	ⅲ° / ⅲ± / ⅲ²

### ENG (ENGINE TYPE)

ENG	DESCRIPTION	T/A	LEVEL
V	1.5 DOHC	W	2.0SOHC
6	1.6 DOHC	Z	2.0DOHC
8	1.8 DOHC	.	COMMON

### T/A (TRANSAXLE TYPE)

T/A	DESCRIPTION	ENG	LEVEL
M	MANUAL	G	AUTOMATIC(GMPT)
A	AUTOMATIC(ALL)	Z	AUTOMATIC(ZF)
.	.	.	COMMON

### BODY (BODY TYPE)

BODY	DESCRIPTION	T/A	LEVEL
4N	4DOOR NOTCHBACK	B	APPLIED
5H	5DOOR HATCHBACK	.	NOT APPLIED
5W	5DOOR STATION WAGON	.	NOT APPLIED

### LEVEL (TRIM LEVEL)

LEVEL	DESCRIPTION	T/A	LEVEL
I	S	S	STANDARD EQUIPMENT
II	SX	O	OPTINAL EQUIPMENT
III	CDX	A	AVAILABLE EQUIPMENT FOR SPECIFIC COUNTRY
.	.	.	NOT APPLIED

NOTE : Please be sure to read "EXPLANATION OF CATALOG COMPOSITION" to find out the details on "LEVEL" column.

## 2. OPTION

CODE	DESCRIPTION	LEVEL		
		ⅲ°	ⅲ±	ⅲ²
ML9	4 SPEED AUTOMATIC T/A(ZF14)	.	O	O
ML4	A SPEED AUTOMATIC T/A(GMPT)	.	O	O
PG4	ALLOY WHEEL,5.5Jx14	.	O	.
PG9	ALLOY WHEEL,6.0Jx15	.	.	O
JL9	ANTILOCK BRAKE SYSTEM	O	O	B
C60	AIR CONDITIONER	O	O	O
C59	UNCOMPLETED A/CONDITIONER	O	O	O
C15	AIR CONDITIONING-FULL ATC	.	.	O
C34	AIR FILTER	O	O	O
W6R	SEAT COVERING-LEATHER	.	O	O
K30	CRUISE CONTROL	.	O	O
CF6	SUN ROOF, POWER	O	O	O
UN1	R/CASSETTE(MECH),25Wx2CH	O	O	O
UN6	R/CASSETTE(LOGIC),25Wx4CH	O	O	O
UP1	CD CHANGER	.	O	O
CAL	CAR ALARM SYSTEM	O	O	O
AJ3	AIR BAG SYSTEM(LHD DRIVE ONLY)	O	O	O

O : OPTION  
 B : BASE  
 . : NOT APPLIED

# NUBIRA

## 1. MODEL

ENG	T/A	BODY	LEVEL
V / 6 / 8 / W / Z	M / A / G / Z	4N / 5H / 5W	ⅴ° / ⅴ± / ⅴ²

### ENG (ENGINE TYPE)

V	1.5 DOHC
6	1.6 DOHC
8	1.8 DOHC
W	2.0SOHC
Z	2.0DOHC
.	COMMON

### T/A (TRANSAXLE TYPE)

M	MANUAL
A	AUTOMATIC(ALL)
G	AUTOMATIC(GMPT)
Z	AUTOMATIC(ZF)
.	COMMON

### BODY (BODY TYPE)

4N	4DOOR NOTCHBACK	B	APPLIED
5H	5DOOR HATCHBACK	.	NOT APPLIED
5W	5DOOR STATION WAGON	.	NOT APPLIED

### LEVEL (TRIM LEVEL)

I	S	S	STANDARD EQUIPMENT
II	SX	O	OPTINAL EQUIPMENT
III	CDX	A	AVAILABLE EQUIPMENT
		.	FOR SPECIFIC COUNTRY
		.	NOT APPLIED

NOTE : Please be sure to read "EXPLANATION OF CATALOG COMPOSITION" to find out the details on "LEVEL" column.

## 2. OPTION

CODE	DESCRIPTION	LEVEL		
		ⅴ°	ⅴ±	ⅴ²
ML9	4 SPEED AUTOMATIC T/A(ZF14)	O	O	O
PG4	ALLOY WHEEL,5.5Jx14	.	O	O
JL9	ANTILOCK BRAKE SYSTEM	O	O	O
C60	AIR CONDITIONER	O	O	O
C59	UNCOMPLETED A/CONDITIONER	O	O	O
C15	AIR CONDITIONING-FULL ATC	.	.	O
C34	AIR FILTER	O	O	O
W6R	SEAT COVERING-LEATHER	.	O	O
CF6	SUN ROOF, POWER	O	O	O
UN1	R/CASSETTE(MECH),25Wx2CH	O	O	O
UN6	R/CASSETTE(LOGIC),25Wx4CH	O	O	O
UP1	CD CHANGER*	O	O	O
CAL	CAR ALARM SYSTEM	O	O	O
ABF	AIR BAG SYSTEM-DUAL	O	O	O
AJ3	AIR BAG SYSTEM-DRIVE SIDE	O	O	O

\* : EXCEPT HATCHBACK

O : OPTION  
 B : BASE  
 . : NOT APPLIED



# KALOS

## 1. MODEL

DRIVE	BODY	LEVEL		
		I	S	B(BASE)
L / R	4N / 4H	II	SE	LS
		III	SX	LT

### ■ DRIVE TYPE

- L : Left hand drive
- R : Right hand drive

### ■ BODY TYPE

- 4N : 4 Door Notchback
- 4H : 4 Door Hatchback

NOTE : Please be sure to read "the EXPLANATION OF CATALOG COMPOSITION"  
to find out the details on "the LEVEL COLUMN"

## 2. OPTION

CODE	DESCRIPTION	BODY		LEVEL		
		4 N	4 H	I	II	III
A31	Window-power,front&rear	B	B	.	O	B
ABF	Air bag-driver,co-driver	B	B	O	O	O
AJ8	Air bag-driver,co-driver,side	B	B	O	O	O
AU3	Electric door locking	B	B	O	O	B
C59	Uncompleted air conditioner	B	B	O	O	O
C60	Air conditioner	B	B	O	O	O
CAL	Car alarm & anti-theft	B	B	.	O	O
CF6	Sun roof,power	B	B	O	O	O
DD4	Mirror electric,co-driver	B	B	.	O	O
JL9	Antilock brake system	B	B	O	O	O
LQ5	1.2L sohc engine	.	B	B	O	O
LX5	1.4L sohc engine	B	B	.	B	.
ML4	4 speed automatic T/A	B	B	.	.	O
N40	Power steering	B	B	O	B	O
PX8	Wheel 5.1/2JX14(steel)	B	B	.	O	B
PZ4	Wheel 5.1/2JX14(alloy)	B	B	.	O	O
T45	Rear spoiler	.	B	.	O	O
T96	Fog lamp,frt	B	B	.	O	B
W8N	CDC player	B	B	.	O	O
WGS	Metallic grain	B	B	.	.	O

# LANOS

## 1. MODEL

ENGINE	T/A	BODY	LEVEL
C / Y / 6	M / A	4N / 3H / 5H	I / II / III

### ENG (ENGINE TYPE)

C	1.4 SOHC
Y	1.5 SOHC
6	1.6DOHC
.	COMMON

### T/A (TRANSAXLE TYPE)

M	MANUAL
A	AUTOMATIC
.	COMMON

### BODY (BODY TYPE)

4N	4DOOR NOTCHBACK
3H	3DOOR HATCHBACK
5H	5DOOR HATCHBACK

### LEVEL (TRIM LEVEL)

I	S
II	SE
III	SX
.	NOT APPLIED

NOTE : Please be sure to read "EXPLANATION OF CATALOG COMPOSITION" to find out the details on "LEVEL" column.

## 2. OPTION

CODE	DESCRIPTION	BODY			LEVEL		
		4 N	3 H	5 H	I	II	III
A31	WINDOW-POWER,FRONT&REAR	B	.	B	.	O	O
A32	WINDOW-POWER,FRONT	B	B	B	O	O	B
ABF	AIR BAG-DUAL	B	B	B	O	O	O
AJ3	AIR BAG-DRIVER SIDE ONLY	B	B	B	O	O	O
AU3	CENTRAL DOOR LOCK	B	B	B	O	O	O
C59	UNCOMPLETED AIR CONDITIONER	B	B	B	O	O	O
C60	AIR CONDITIONER	B	B	B	O	O	O
CAL	CAR ALARM & ANTI-THEFT	B	B	B	O	O	O
CF6	SUN ROOF,POWER	B	B	B	O	O	O
JL9	ANTILOCK BRAKE SYSTEM	B	B	B	O	O	O
L13	1.4L SOHC ENGINE	B	B	B	O	O	.
ML4	4 SPEED AUTOMATIC T/A	B	B	B	O	O	O
N40	POWER STEERING	B	B	B	O	O	B
T45	REAR SPOILER	.	B	B	.	.	O
U83	SPEAKER-COAXIAL 2 WAY	B	B	B	.	O	O
US8	SPEAKER-STANDARD	B	B	B	O	O	B
UNA	CASSETTE(MECH),7WX2CH(AKF-4331)	B	B	B	O	O	O
UN1	CASSETTE(MECH),25WX2CH(AKF-4036)	B	B	B	O	O	O
UN6	CASSETTE(LOGIC),25WX4CH(AKF-0816)	B	B	B	.	O	O
W8V	CD PLAYER	B	B	B	.	O	O

O : OPTION  
 B : BASE  
 . : NOT APPLIED

## MATIZ

### 1. MODEL

CLT	LEVEL
M / A	I / II / III

#### CLT (CLUTCH TYPE)

M	MANUAL CLUTCH
A	AUTOMATIC CLUTCH
.	COMMON

#### LEVEL (TRIM LEVEL)

I	S	S	STANDARD EQUIPMENT
II	SE	O	OPTINAL EQUIPMENT
III	CD	A	AVAILABLE EQUIPMENT
		.	NOT APPLIED

NOTE : Please be sure to read "**EXPLANATION OF CATALOG COMPOSITION**" to find out the details on "**LEVEL**" column.

### III. TABLE OF COLOR CODE

#### LEGANZA

When ordering the color parts, the color code should be quoted.

EXTERIOR COLOR		INTERIOR COLOR
CODE	DESCRIPTION	
11U	GALAXY WHITE(S)	GREY
23U	CARIBBEAN BLUE(P)	GREY
42U	DEEP BLUISH GREEN(M1)	BEIGE
62U	KHAKI BEIGE(M2)	BEIGE
69U	AUTUMN BROWN(M1)	BEIGE
74U	SPINEL RED(M1)	BEIGE
81U	STREAMLINE GREY(M1)	BEIGE
83L	GRANADA BLACK(M1)	GREY
92U	POLY SILVER(M2)	GREY
93U	OLIVE SILVER(M2)	BEIGE

#### NUBIRA

When ordering the color parts, the color code should be quoted.

EXTERIOR COLOR		INTERIOR COLOR
CODE	DESCRIPTION	
11U	GALAXY WHITE	GREY
20U	PACIFIC BLUE	GREY
24U	REGATTA BLUE	GREY
40U	SHERWOOD GREEN	GREY
42U	DEEP BLUISH GREEN	GREY
60U	BRIGHTON GOLD	GREY
61U	MONSTONE BEIGE	GREY
70U	RED ROCK	GREY
73L	SUPER RED	GREY
92U	POLY SILVER	GREY

## TACUMA

When ordering the color parts, the color code should be quoted.

EXTERIOR COLOR		INTERIOR COLOR
CODE	DESCRIPTION	
11U	GALAXY WHITE(S)	85I (GRAY-TWO TONE)
20U	PACIFIC BLUE(M1)	
22U	AQUA BLUE(M1)	
24U	REGATTA BLUE(M1)	
36U	GILT GREEN(M1)	
41U	GRASS GREEN(M1)	
60U	BRIGHT GOLD(M2)	
70U	RED ROCK(M1)	
80U	LIGHT OPAL GRAY	
92U	POLY SILVER(M2)	

(S) = SOLID

(M1) = MICA

(M2) = METALLIC

## LANOS

When ordering the color parts, the color code should be quoted.

EXTERIOR COLOR		INTERIOR COLOR
CODE	DESCRIPTION	
11U	GALAXY WHITE	GREY
21U	AZURITE BLUE	GREY
27U	VIOLET BLUE	GREY
42U	DEEP BLUISH GREEN	GREY
43U	LIGHT EVERGREEN	GREY
73L	SUPER RED	GREY
74U	SPINEL RED	GREY
81U	STREAMLINE GREY	GREY
83L	GRANADA BLACK	GREY
92U	POLY SILVER	GREY

## MATIZ

When ordering the color parts, the color code should be quoted.

EXTERIOR COLOR		INTERIOR COLOR
CODE	DESCRIPTION	
10L	CASABLANK WHITE	22I : GENERAL
29U	SKY BLUE	-PURPLE
46U	LEAF GREEN	83I : OPTION
51U	GOLDEN YELLOW	- BEIGE GRAY
85U	DARK SAPPHIRE	42I : STYLE
92U	POLY SILVER	- BROWN
25U	COBALT BLUE	20I : SPORTY
73L	SUPER RED	- BLUE
75U	ORANGE COPPER	

## KALOS

When order the color parts, the color code should be quoted.

EXTERIOR COLOR		INTERIOR COLOR
CODE	DESCRIPTION	82I
11U	GALAXY WHITE	GREY
32U	PASTEL BLUE	
33U	SPORTS BLUE	
34U	MODERN GREEN	
48U	BRILLIANT GREEN	
49U	YELLOW GREEN	
67U	GOLDISH BEIGE	
73L	SUPER RED	
77U	ACTIVE RED	
87U	PEARL BLACK	
95U	DOVE SILVER	

## LACETTI

When order the color parts, the color code should be quoted.

EXTERIOR COLOR		INTERIOR COLOR
CODE	DESCRIPTION	82I
11U	GALAXY WHITE	GREY
31U	DENIM BLUE	
34U	MODERN GREEN	
35U	MINT GREEN	
68U	MELANGE BEIGE	
70U	RED ROCK	
87U	PEARL BLACK	
92U	POLY SILVER (METALLIC)	
26V	IMPERIAL BLUE	
44V	KHAKI GREEN	

## IV. EXPLANATION OF CATALOG COMPOSITION

① 1111 ENGINE UNIT(SOHC) ②																				
I T C	KEY NO.					PART NAME														
	PART NO.	C H G	D R V	E N G	T / A	MODEL ⑦					L / R	Q T Y	PNC	P / C O D E	EFFECTIVE POINT				OPTION	REMARKS
						BODY			LEVEL						VIN1		VIN2			
						4N	3H	5H	I	II					III	FROM	TO	FROM		
	④ 1	ENGINE A ③									⑨	⑩	⑮	⑬		⑪		⑧	⑫	
<input type="checkbox"/>	96184185	.	C..	M.	B	B	B	S	O	.	1	100001	BJ					-XCA		
<input type="checkbox"/>	96352330	⑭	.	C..	M.	B	B	B	A	A	1	100001	B6					&XCA		
	96350294	.	Y..	M.	B	B	B	O	S	S	1	100001	HJ					-XCA		
<input type="checkbox"/>	96352335	.	Y..	M.	B	B	B	A	A	A	1	100001	H6					&XCA		
	96350292	.	Y..	A.	B	B	B	O	O	O	1	100001	HL					-XCA		
	96352336	.	Y..	A.	B	B	B	A	A	A	1	100001	H7					&XCA		
	⑥ 2	SHACKLE-ENG TRANSPORT																		
<input type="checkbox"/>	⑤ 90076951		CY.	..	B	B	B	S	S	S	1	11C021								
	3	BOLT																		
<input type="checkbox"/>	02865535		CY.	..	B	B	B	S	S	S	1	11C021							M8X22	

### \*\* EXPLANATION OF CATALOG COMPOSITION

- |                           |                   |                                  |
|---------------------------|-------------------|----------------------------------|
| ① GROUP NO.               | ② GROUP NAME      | ③ PART NAME                      |
| ④ KEY NUMBER(FIG.NO)      | ⑤ PART NUMBER     | ⑥ ITC (Interchangeability CODE)  |
| ⑦ MODEL                   | ⑧ OPTION          | ⑨ L/R                            |
| ⑩ QT'Y (Quantity)         | ⑪ EFFECTIVE POINT | ⑫ REMARKS                        |
| ⑬ PART IDENTIFICATON CODE | ⑭ CHANGE CODE     | ⑮ PNC (Part Number Control Code) |



### 1. GROUP NO.

The 1st one digit indicates " MAIN GROUP NO." and next three digits indicate " SUB GROUP NO."

### 2. SUB GROUP NAME

This indicates the name of sub group within the main group.

### 3. PART NAME

Part names are shown in multi-language (example)

(E).....English (F).....French  
(D).....German (S).....Spanish

### 4. KEY NUMBER

Key number corresponds with the reference number on the illustration. Key number is not always sequenced.

### 5. PART NUMBER

The number is assigned to each part.

### 6. ITC(INTERCHANGEABILITY CODE)

When any part number has been changed due to design modification, this indicates the interchangeability between two part numbers.

\*Interchangeability symbols

Y : The old and new parts are interchangeable.

N : The old and new parts are not mutually interchangeable.

O : The new part can be used for the old part but the reverse is not possible.

### 7. MODEL

This column indicates Drive Type, Engine Type, Transaxle Type, Body Type, Clutch Type, Trim Level.

* Drive type	* Transaxle type
- L : Left hand drive	- M : Manual transaxle
- R : Right hand drive	- A : Automatic transaxle (All)
- . : Common	- G : Automatic transaxle (GMPT)
	- Z : Automatic transaxle (ZF)
	- . : Common

* Engine type	
- . : Common	
- 4 : 1.2L SOHC	- 6 : 1.6 DOHC
- A : 1.4L SOHC	- W : 2.0 SOHC
- 7 : 1.4L DOHC	- Z : 2.0 DOHC
- Y : 1.5 SOHC	- C : 1.4 SOHC
- V : 1.5 DOHC	

* Clutch type
- M : Manual clutch
- A : Automatic clutch
- . : Common

* Trim level.	* Body type
- EVANDA : SX/CDX	- 3 H : 3 Door Hatchback
- LEGANZA : SX/CDX	- 4 N : 4 Door Notchback
- TACUMA : SE/SX/CDX	- 5 H : 5 Door Hatchback
- NUBIRA : SE/SX/CDX	- 5W : 5 Door Station Wagon
- KALOS : S/SE/SX	- LACETTI : SE/SX/CDX
- LANOS : S/SE/SX	
- MATIZ : S/SE/CD	

"LEVEL" column indicates the expression of applicable trim level.

S : Standard equipment.

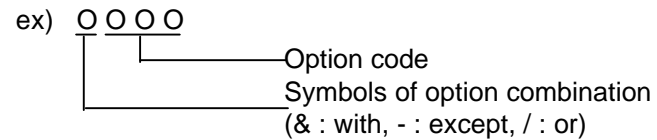
O : Option equipment.

A : Available equipment for the special package according to the area regulation.

. : Not applied

### 8. OPTION

This column indicates option code.  
Refer to "VI. TABLE OF OPTION CODE "



### 9. L/R

This column indicates mounting position of part.  
L : Left hand side  
R : Right hand side

### 10. Q'TY

This column indicates the quantity required per sub-group.  
The quantity is normally shown by numeric or by symbol as bellow.  
A : As required quantity.

### 11. EFFECTIVE POINT

This column indicates the " VIN " in production.

### 12. REMARKS

Supplementary or reference information is given in this column.  
Specification, Use, Type, Applicable Country, etc.

### 13. PART IDENTIFICATION CODE

This column indicates part identification code that is marked with two characters. Part identification code will help you in discrimination the parts easily. But, all parts will not always carry the part identification code

### 14. CHG (CHANGE)

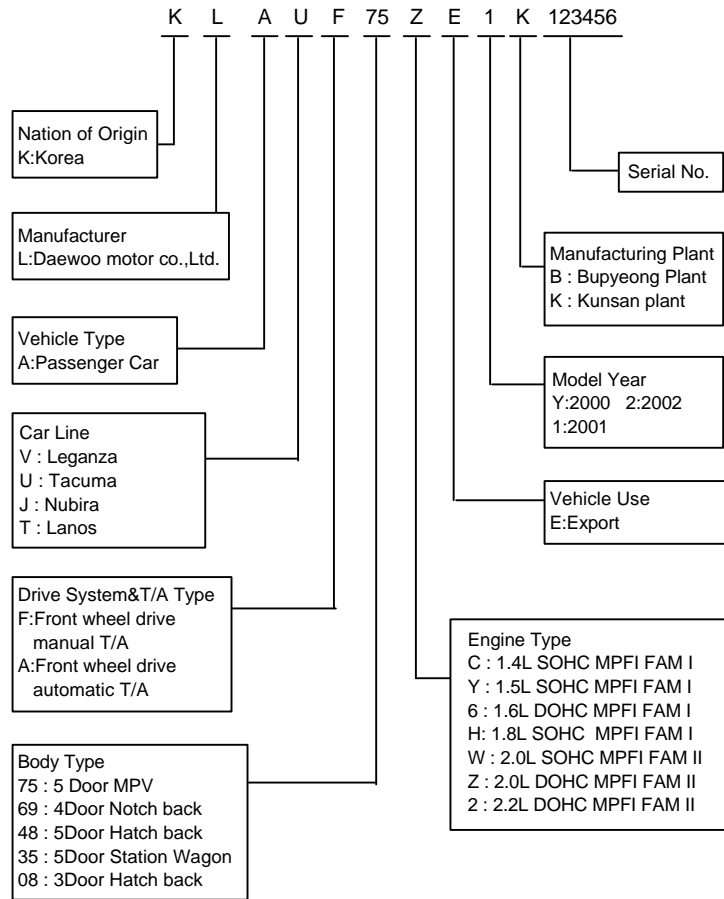
This column indicates code of the changed parts.  
CR : Correction  
AD : Addition  
DL : Deletion  
MD : Modification

### 15. PNC (Parts Number Control Code)

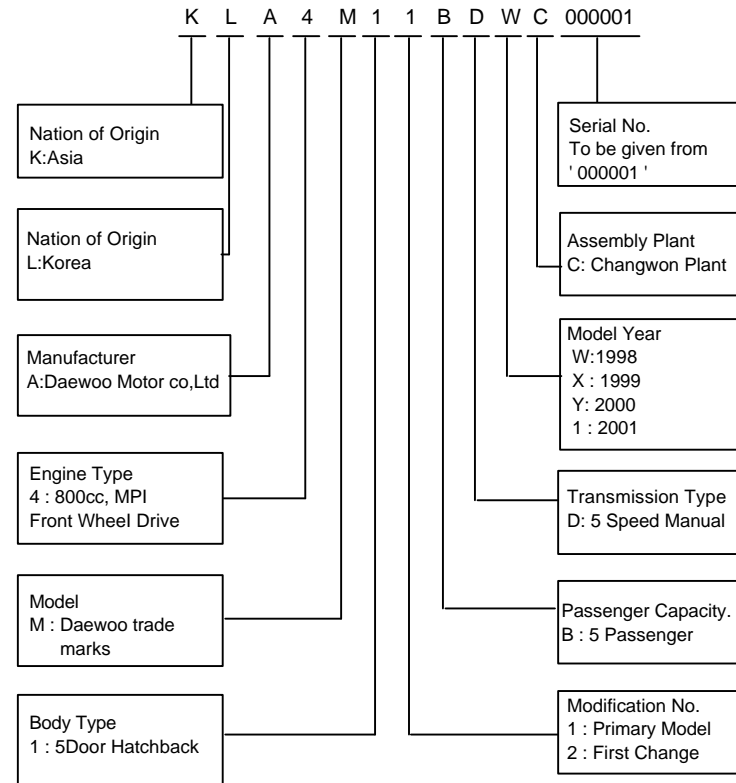
This column indicates the code of parts number control.

# V. CONSTRUCTION OF VEHICLE IDENTIFICATION NUMBER

## LEGANZA / TACUMA / LACETTI / NUBIRA / KALOS / LANOS



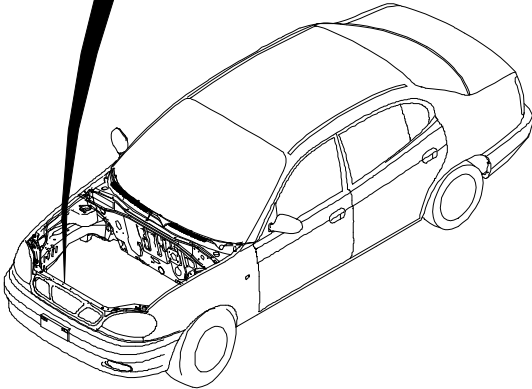
## MATIZ



**LOCATION OF VEHICLE IDENTIFICATION NUMBER**

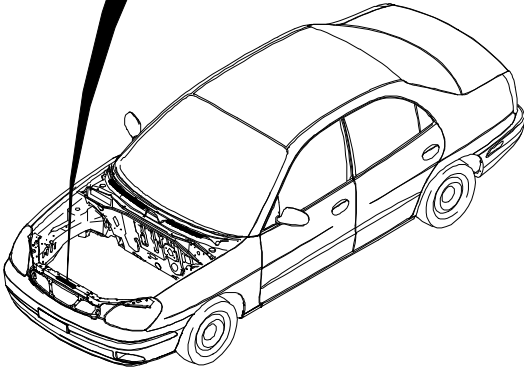
**LEGANZA**

<b>DEAWOO MOTOR CO.,LTD.</b>	
TYPE APPROVAL NO.	<input type="text"/>
VEHICLE IDENTIFICATION NO.	<b>KLAVF69ZEXB123456</b>
MODEL	<input type="text"/>
ENGINE TYPE	<input type="text"/>
BODY TYPE	<input type="text"/>



**NUBIRA**

<b>DEAWOO MOTOR CO.,LTD.</b>	
TYPE APPROVAL NO.	<input type="text"/>
VEHICLE IDENTIFICATION NO.	<b>KLAVF69ZEXB123456</b>
MODEL	<input type="text"/>
ENGINE TYPE	<input type="text"/>
BODY TYPE	<input type="text"/>



TACUMA

○	<b>DAEWOO</b> DAEWOO MOTOR CO.,LTD	1877KG	Body color
		3377KG	11U
	* KLAUF75ZE1K123456 *	1 - 1050KG	○
		2 - 985KG	

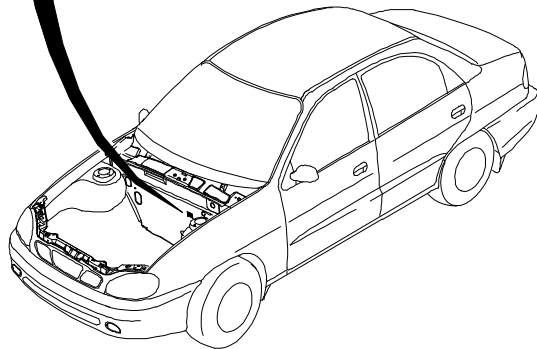


LANOS

**DAEWOO MOTOR CO.,LTD.**

KLATF69YEVB123456

1 - **KG**  
2 - **KG**



MATIZ

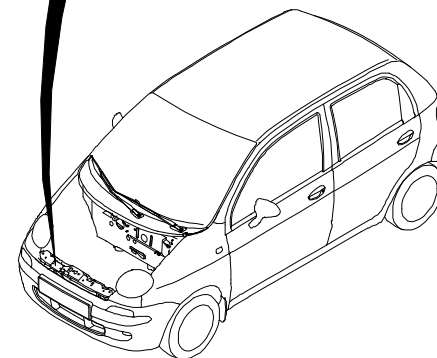
**DAEWOO**

DAEWOO MOTOR CO., LTD.

MDEL Y4A11  
TYPE APPROVAL NO. 1-XXXX-XXX

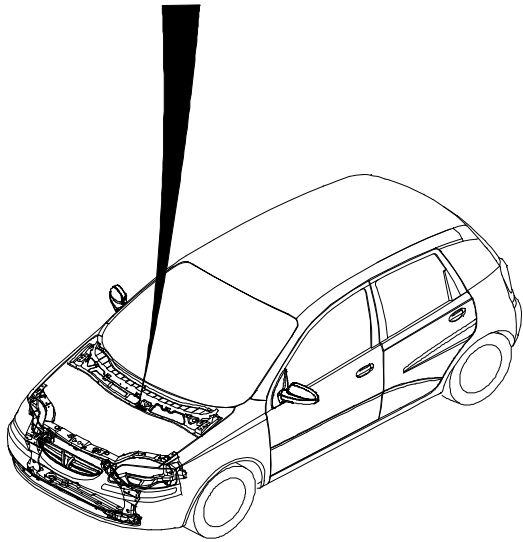
**VEHICLE IDENTIFICATION NO.**  
**KLY4A11BDWC000001**

ENGINE TYPE F8CV  
BODY COLOR 80L



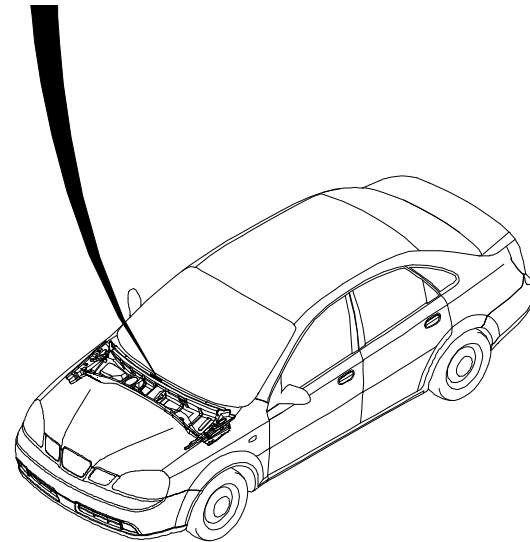
**KALOS**

**K L A S F 69 Y E 2 B 123456**



**LACETTI**

**K L A N F 19 6 E 3 K 123456**



# VI. ENGINE IDENTIFICATION NUMBER

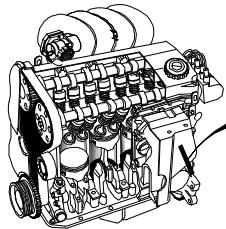
## FAMILY [I] TYPE 1

A 15 D M N 123456 B

Example)

- 1.3 SOHC
  - A13SMS 123456B
- 1.5 SOHC
  - A15SMS 123456B
- 1.5 DOHC
  - A15DMS 123456B
- 1.6 DOHC
  - A16DMS 123456B

Engine License  
 A : IN LINE  
 V : V TYPE  
 Engine  
 Displacement  
 13 : 1.3L  
 15 : 1.5L  
 16 : 1.6L  
 Cam Mechanism  
 D : DOHC  
 S : SOHC  
 Injection Type  
 E : MPI  
 L : LPG  
 Compress Ratio  
 N : 9.0<N<9.5  
 S : 9.5<S<10.0  
 Serial No.  
 Plant Location  
 B : BUPYONG

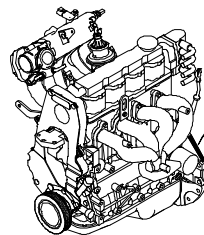


A16DMN 123456B

## FAMILY [I] TYPE 2

F 18 S 2 123456 K

Engine License  
 F : FAM I  
 Engine  
 Displacement  
 18 : 1.8L  
 Cam Mechanism  
 D : DOHC  
 S : SOHC  
 Injection Type  
 2 : MPI  
 Serial No.  
 Plant Location  
 K : KOREA



F18D2 123456K

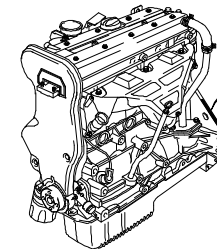
## FAMILY [II] TYPE

C 20 S E D 123456

Example)

- 1.8
  - 2.0 LPG
    - C20NL 123456
  - 2.0 DOHC
    - C20SED 123456

Exhaust Emission  
 Limit  
 C : Domestic,  
 Others  
 X : Europe  
 T : North America  
 Engine  
 Displacement  
 18 : 1.8L  
 20 : 2.0L  
 22 : 2.2L  
 Cam Mechanism  
 N : SOHC  
 S : DOHC  
 Injection Type  
 E : MPI  
 L : LPG  
 Plant Location  
 D : Daewoo Motor  
 co., LTD

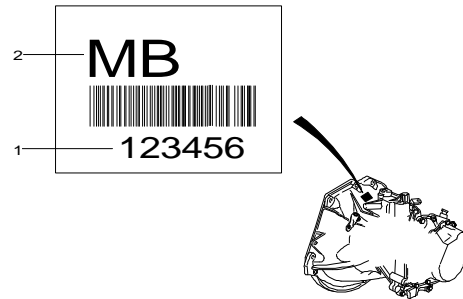


C20SED 123456



# VII. TRANSAXLE IDENTIFICATION NUMBER

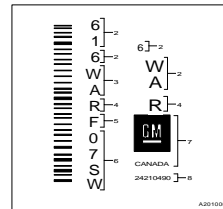
## MANUAL TRANSAXLE



Serial No.

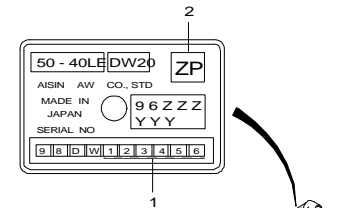
PART IDENTIFICATION CODE

## AUTOMATIC TRANSAXLE TYPE [GMPT]



- 1 Assembly plant (Windsor, Canada)
- 2 Model Year (1996)
- 3 Broadcast Code
- 4 Model Name (4T40E)
- 5 Update Level
- 6 Sequential Number
- 7 Manufacturer
- 8 Part Number

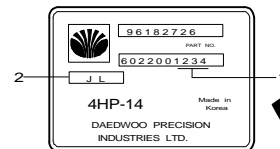
## AUTOMATIC TRANSAXLE TYPE [AISIN]



Serial No.

PART IDENTIFICATION CODE

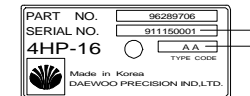
## AUTOMATIC TRANSAXLE TYPE [ZF14]



Serial No.

PART IDENTIFICATION CODE

## AUTOMATIC TRANSAXLE TYPE [ZF16]



Serial No.

PART IDENTIFICATION CODE

## VIII. TABLE OF OPTION CODE

CODE	DESCRIPTION	CODE	DESCRIPTION	CODE	DESCRIPTION	CODE	DESCRIPTION
10L	CASABLANCA WHITE	80I	BLACK-INTERIOR	ABL	KNEE BOLSTER,DRIVE SIDE	AQ3	SEAT-FRONT,ADJ BACK,VAR 3
11U	GALAXY WHITE-SOLID	80U	LIGHT OPAL GREY	ACR	SKISLEEVE-REAR SEAT	AQ6	SEAT-FRONT,ADJ BACK
13U	WHITE PEARL-MICA	81I	ANTHRACITE BLACK-INTERIOR	AG1	SEAT-L, 4WAY, POWER	AQ8	SEAT-FRONT,ADJ BACK,VAR 1
20U	PACIFIC BLUE	81U	STREAMLINE GREY-MICA	AG3	SEAT-DR,8 WAY,POWER	AQ9	SEAT-FRONT, ADJ BACK, VAR.2
22M	TEAL BLUE	82I	GREY-INTERIOR	AG4	SEAT-L,HEIGHT ADJUST,MAN	AQA	SEAT-FRONT,STANDARD
23I	DARK PURPLE-INTERIOR	83L	GRANADA BLACK-MICA	AGD	SEAT-DR,H/ADJ DUAL,MAN	ARD	AUDIO REMOCOON SWITCH
23U	CARIBBEAN BLUE-CROM	83U	SKY GREY-METALLIC	AGS	SEAT-DR,H/ADJ SINGLE,MAN	ARE	ARMREST-FOLDING TYPE
24U	REGATTA BLUE-MICA	84I	GREY-INTERIOR,TWO TONE	AJ3	SIR-FRONT,DRIVE SIDE	AS7	BELT-FRT,3 PNT ELR,HYBRID
25U	COBALT BLUE	85I	ANTHRACITE-INTR,TWO TONE	AJ7	SIR-FRONT,CO DRIVE	ASB	SEAT BACK POCKET
28U	ROYAL BLUE	85U	DARK SAPPHIRE	AJ8	AIR BAG-FRT SIDE,DR/CO-DR	ASC	SEAT BACK POCKET-CO DRIVER
29U	SKY BLUE	86U	STORM GREY	AJF	AIR BAG-FRT SIDE,DR	ASE	SEAT BACK POCKET-DRIVER
2G3	EASTERN EUROPE-REGULATION	89U	COLOR-SPECIAL ORDER SALES	AK1	BELT-FRT,DRIVE,3P ELR	ASF	SEAT SIDE POCKET-CO DRIVER
2G5	CANADA-MANDATORY	92L	CASHMERE BEIGE-METALLIC	AK9	BELT-RR,L R/ELR & CTR/2PT	ASG	BLIND COVER - ASSIST GRIP
30U	MIDNIGHT BLUE-MICA	92U	POLY SILVER-METALLIC	AKC	BELT-FRT,CO-DR,3P ELR	ASK	BELT FRT DR/ELR CO DR/CRS
37U	DANUBE GREEN	93U	OLIVE SILVER-METAL	AKE	BELT-RR,ELR & CTR/3 POINT	ASW	BELT-FRONT DOOR-ELR
38U	CYBER GREEN	A01	WINDSHIELD-W/SHADE BAND	AKM	BELT-RR,OTR 3P ELR,W/O CLR	AT3	SEAT TRIM-HALF
39L	GREEN-GREY,METAL 139	A02	WINDSHIELD-2 PIECE,UPR TIN	AKS	BELT-RR,CTR 2P MANUAL	ATA	SEAT COVERING-STANDARD
40U	SHERWOOD GREEN	A06	GLASS-SOLAR CTRL,W/SHIELD	AKT	BELT-RR,CRS & CTR/3 POINT	ATB	SEAT COVERING-DELUXE
40V	FROST GREEN-METALLIC	A07	WINDOW-CLEAR,W/S CLR BAND	AKV	BELT-FRT,DR,3P ELR,L/LIMIT	ATC	SEAT COVERING-SUPER DELUXE
41U	GRASS GREEN	A08	WINDOW-CLEAR,W/S TIN BAND	AKW	BELT-FRT,CO-DR,WLR	ATD	SEAT COVERING-FULL CLOTH
42U	DEEP BLUIISH GREEN-MICA	A09	GLASS-HYDROPHOBIC	AKY	BELT-FRT,CODR,3P ELR,L/LIM	ATF	SEAT COVERING-LEATHER
45U	MOSSWOOD GREEN-MICA	A10	GLASS-SOLAR CONTROL	ALA	BELT-RR,L/R 3 POINT ELR	ATL	SEAT COVERING-HI DELUXE
46U	LEAF GREEN	A22	WINDSHIELD-LAMINAR	AM4	SEAT-RR FIXED W/SEM	ATM	SEAT COVERING-COMFORT DLX
51U	GOLDEN YELLOW	A30	WINDOW-POWER,DELETE	AM5	SEAT-RR,FIXED	ATP	ANTI THEFT ALARM PROVISION
52U	HIGHWAY YELLOW-SOLID	A31	WINDOW-POWER OPER,FRT&RR DR	AM6	SEAT-RR,FIXED W/SEMI HI-BK	ATR	SEAT COVERING-ULTRA DELUXE
56U	LEMON YELLOW	A32	WINDOW-POWER OPERATED,FRT	AM7	SEAT-RR,FOLDING	ATW	SEAT COVER-CLOTH,TRICOT,1
57U	ORANGE	A33	WINDOW-PWR,F/R,W/DRS'1 TCH	AM8	SEAT-RR FIXED W/SEMI VAR1	ATX	SEAT COVER-CLOTH,TRICOT,2
5M1	LIBYA-MANDATORY	A34	WINDOW-MANUAL OPERATED,FRT	AM9	SEAT-RR,SPLIT COLLAPSIBLE	ATY	SEAT COVER-CLOTH,WOOVEN
60I	BEIGE-INTERIOR	A57	TURNING FUNCTION-FRT SEAT	AMB	SEAT-RR,S/FOLDING,HD REST	AU3	LOCK-DOORS,ELECTRIC
60U	BRIGHTON GOLD	A66	WINDOW-POWER,1 TOUCH,DOWN	AMC	SEAT-RR,FOLDING W/HEADREST	AU7	TAILGATE OPENING-C/REMOTE
60V	RICH GOLD-METALLIC	A67	ANTENNA-WINDSHIELD,RADIO	AMP	SEAT-RR,FIXED,W/HEADREST	AUL	VERRIDE DOOR LATCH
61I	BEIGE-INTERIOR,TWO TONE	A81	TRUNK LID OPENING-CABLE	AN3	TRAY-SEAT,UNDER	AWL	BELT-FRT,L/R,WLR
61U	MOONSTONE BEIGE	A82	TAILGATE OPENING-KEY TURN	AP1	ASSIST GRIP	AYK	HEADREST-FRT,W/O TILTABLE
62U	KHAKI BEIGE-MICA	A88	SEAT-REAR,DELUXE	AP3	ASSIST GRIP-REAR	AYT	HEADREST-FRT,TILT & HEIGHT
63U	SATIN BEIGE	A89	SEAT-REAR,STANDARD	AP4	COAT HOOK-REAR,W/O A/GRIP	B11	BACK POCKET-FRT SEAT,LH&RH
64U	RED BROWN-MICA	A95	GLOVE BOX-OPENING W/O KEY	AP5	SEAT-REAR,ARM REST	B15	MOLDING-ROCKER,BODY COLOR
65U	ELEGANT BEIGE	A99	LOCK-GLOVE BOX	AP8	CHILD SEAT FIX PROVISION	B17	MOLDING-ROCKER,SPORTY
69U	AUTUMN BROWN-MICA	AAC	W/HEIGHT ADJ-SEAT BELT	AP9	ARMREST-RR SEAT,W/DEPOSIT	B32	FLOOR COVERING-VINYL MAT
70U	RED ROCK	AAF	S/BELT HEIGHT ADJ-FRT	APC	BELT-FRT,CO-DR,PRETENSION	B39	LOAD FLOOR COVER-CARPET
73L	SUPER RED	ABF	SIR-FRT,DR & CO-DR SIDE	APD	BELT-FRT,DRIVE,PRETENSION	B41	LOAD FLOOR COVER-VNL MAT
73U	DARK WINE PURPLE-MICA	ABH	AIR BAG SYSTEM-ADVANCED	APF	BELT-SEAT PRET_ELE	B46	FLOOR COVER-HEEL PAD
74U	SPINEL RED-MICA	ABJ	AIR BAG SYSTEM-DUAL STAGE	APP	BELT-SEAT,PRETENSIONER,FRT	B58	FLOOR COVERING-CARPET DLX
75U	ORANGE COPPER	ABK	KNEE BOLSTER,LH/RH	APW	BELT-FRT,DRIVE,WLR	B61	MOLDING-BODY COLOR

## VIII. TABLE OF OPTION CODE

CODE	DESCRIPTION	CODE	DESCRIPTION	CODE	DESCRIPTION	CODE	DESCRIPTION
B63	MOLDING-BODY SIDE,DLX	C60	AIR CONDITIONING	DBF	SUNSHADE-PASS,MIR,W/O CVR	FL6	SIDE INDICATOR LAMP,FRT
B64	MOLDING-ACCENT	C99	LAMP-MAP, FRONT	DBH	SUNSHADE-DRIVE,W/MIRROR	FL7	LAMP-REAR COMB,SAE
B66	MOLDING-BODY SIDE,B/COLOR	CA1	CANISTER	DD1	SUNSHADE-VINYL	FL8	LAMP-REAR COMB,ECE
B70	MOLDING-METAL PAINT	CAF	FILTER-A/C,COMBINATION TY	DD2	SUNSHADE-CLOTH	FLF	HEAD LAMP-PROJ,SPORTY
B88	MOLDING-BODY SIDE,W/O Cr	CAL	CAR ALARM,ANTI-THEFT	DD4	MIRROR-CO DR/SI,ELEC OP	FLG	HEAD LAMP-PROJECTION TYPE
B91	MLDG-BODY SIDE,PLAS BLACK	CB1	SUNROOF-COVERING	DFP	SUNSHADE-FLAP FUNCTION	FLH	HEAD LAMP-MFR TYPE
B92	MOLDING-B/SIDE WIDE TYPE	CF6	SUNROOF-SLIDE & TILT POWER	DHC	DOOR I/S HANDLE-Cr TYPE	FM1	HEAD LAMP-KOREA,LHD
B96	PILLAR TRIM-A	CLA	CLUTCH-AUTO	DM0	MIRROR-M/FOLDING,MANU,RHD	FQ4	AXLE RATIO-3.72
BC1	INSTRUMENT PAD-STD	CLC	CLUTCH-CABLE	DM4	MIRROR-ELEC.FOLDING,POWER	FTP	FUEL TANK-PLASTIC
BC2	INSTRUMENT PAD-DLX	CLH	CLUTCH-CRC,HYDRAULIC	DM6	MIRROR-MANUAL FOLDING,MANU	FTQ	FUEL TANK-PLASTIC,TURBIN
BCP	INSTR PANEL-ACCENT COLOR	CLM	CLUTCH-CSC,HYDRAULIC	DM7	MIRROR-MANUAL FOLDING,POWE	FTS	FUEL TANK-STEEL
BD2	HANDLE-REAR END,BLACK	CN3	CANISTER-0.85	DM8	MIRROR-MOLDED COLOR	FW5	FLUSH WHEEL COVER-15
BD7	HANDLE-REAR END,BODY COLOR	CN4	CANISTER-1.5	DM9	MIRROR-BODY COLOR	G35	AXLE RATIO-3.550
BF9	FLOOR MAT-FRT&RR AUX	CN5	CANISTER-1.85	DMA	MIRROR-2 WAY GLASS	G38	AXLE RATIO-3.945
BH3	HANDLE-DOOR,BLACK	CND	CARD HOLDER-I/P	DMB	MIRROR-BLUE GLASS	G39	AXLE RATIO-3.944
BH4	HANDLE-DOOR,BODY COLOR	CNJ	HOLDER-SUNGLASS	DP0	MIRROR-M/FOLDING,POWER,RHD	G41	AXLE RATIO-4.176
BH5	HANDLE-DOOR,BRIGHT	CNT	TICKET HOLDER	DP3	AUTO DOWN MIRROR-REVERSE	G42	AXLE RATIO-4.124
BS2	BODY SIDE MOLDING-BODY COL	CRS	FRT R/LAMP-W/SUN ROOF S/W	DRF	PAD-SIDE IMPACT,DOOR TRIM	GEH	GUN EYE-HOOD
BS7	BOOSTER-TANDEM 7"+ 8"	CW1	SWITCH-DOOR LOCK,ELEC	DS1	MIRROR-O/S DR MAN REMOTE	GH1	GARNISH-TRUNK,BODY COLOR
BS9	BOOSTER-SINGLE 9"	CW8	COVER-SWITCH,KEY COLOR	DS5	MIRROR-O/S DR MAN FOLD,ELE	GH2	GARNISH-TRUNK,BRIGHT
BSE	REINF-STRUCTURE,BODY	D01	CONSOLE-STANDARD	DSL	SUNVISOR-W/LIGHTING FUNC	GH3	MANDATORY-SAUDIARBIA
C09	HEATER-ENGINE BLOCK	D02	CONSOLE-DELUXE	DSP	DIGITAL SIGNAL PROCESSOR	GM5	AXLE RATIO-3.75
C11	DEFROSTER-INTERLOCKING	D13	ARMREST-FOLDING,CO DR	DTR	DAY TIME RUNNING LIGHT	GM7	AXLE RATIO-3.91
C15	AIR CON-FULL ATC	D23	ARMREST-FOLDING	DZ3	MALTA-MANDATORY	GN9	AXLE RATIO-4.11
C17	AIR PURIFIER	D31	MIRROR-INSIDE,TILT,RR VIEW	EC1	ECM-HIGH ALTITUDE	GPS	NAVIGATION SYSTEM
C18	AIR QUALITY CONTROL SYSTEM	D33	MIRROR-DR/SI,R/CONTROL	EC2	ECM-LOW VOLATILITY FUEL	GPT	DREAM NET
C19	AIR CON-UNCOMPLETED FATC	D35	MIRROR-INSIDE,CONVENTIONAL	EGR	EXHAUST GAS RECIRCULATION	GS4	AXLE RATIO-3.55
C1X	INST PANEL-METALIC PAINT	D38	AUTO DAY & NIGHT MIRROR	EMB	ENGINE IMMOBILIZER	GS5	AXLE RATIO-4.405
C20	VARIABLE SPEED WIPER,FRT	D39	MIRROR-CO DR/SI,R/CONT	EY2	ROOF RACK	GS6	AXLE RATIO-4.225
C22	WIPER-W/O INTERMITTENT	D40	MIRROR-HEATING FUNCTION	F39	SPRING-FRONT & REAR,STD	GS7	AXLE RATIO-3.979
C23	WIPER-W/INTERMITTENT	D49	MIRROR-INSIDE,TILT,LARGE	F40	SPRING-FRT&RR,HEAVY DUTY	GSA	GAS SHOCK ABSORBER
C24	WIPER-RAIN SENSING	D69	PARCEL SHELF-REAR,W/STRING	FAC	AUTO TEMP DISPLAY-CELS	GY2	AXLE RATIO-3.847
C25	WASHER&WIPER-BACK WINDOW	D6Q	CLUSTER-COLOR,WOOD GRAIN	FAF	AUTO TEMP DISPLAY-FAHR	HD3	INSULATION-HOOD
C2A	WIPER-AUTO CONTROL,REAR	D75	TABLE-SEAT BACK,DRIVE	FAK	FIRST AID KIT	HGW	WINDSHIELD HEATED SWITCH
C34	AIR FILTER-I/P INLET DUCT	D76	TABLE-SEAT BACK,PASSENGER	FAN	FLOOR-RR DECK,LONG	HL4	HEAD LAMP LEVELING DEVICE
C35	HEATER-REAR,LEG ROOM	D80	LOAD COMPARTMENT-SIDE	FC0	FUEL CUT OFF SWITCH	I34	MIRROR-OUTSIDE,MAN STD
C46	HEATER	DB0	SUNSHADE-LH,W/O VANITY MIR	FE2	ELEC CONTROL SUSPENSION	I68	PEDAL PAD-STAINLESS TYPE
C49	REAR WINDOW-DEFOGGER	DB5	SUNSHADE-RH,W/O VANITY MIR	FFZ	REINFORCE-REAR SEAT,FLOOR	JB3	BRAKE DISC-VENT
C50	REAR WINDOW-DEFOGGER W/TIM	DB8	SUNSHADE-LH,VANITY MIRROR	FL1	HEAD LAMP-ECE,LHD	JB4	BRAKE DISC-VENT,14 INCH
C54	HEATING MAT-FRT SEAT,DRIVE	DB9	SUNSHADE-RH,VANITY MIRROR	FL2	HEAD LAMP-SAE,LHD	JB5	RR BRAKE-DRUM
C55	REAR WDO-DEFOGGER,WO/TIMER	DBC	SUNSHADE-PASS,W/MIR,CVR	FL3	HEAD LAMP-ECE,RHD	JB6	RR BRAKE-DISC
C58	HEATING MAT-FRT SEAT,CO-DR	DBD	SUNSHADE-DRIVE,W/O MIR	FL4	HEAD LAMP-ECE,LHD,PROJ	JB9	BRAKE DISC-VENT II
C59	AIR CON-UNCOMPLETED MANUAL	DBE	SUNSHADE-DRIVE,W/MIR,CVR	FL5	SIDE REFLECTOR,FRT & RR	JL9	BRAKE-ANTI LOCK SYS,W/O ASR

## VIII. TABLE OF OPTION CODE

CODE	DESCRIPTION	CODE	DESCRIPTION	CODE	DESCRIPTION	CODE	DESCRIPTION
JN1	BRAKE-H TYPE	MG4	TRANS-MAN,5SPD,CR	PA5	HUBCAPS-WHEEL	RDS	RADIO DATA SYSTEM-CASSETTE
JN2	BRAKE-X TYPE	MG5	TRANS-MAN,5SPD,MODIFY CR	PC6	WHEEL 6JX16 ALU,DELUXE	REF	NEW REFRIGERANT(R-134a)
JTC	TRACTION CONTROL W/ABS	ML4	TRANSMISSION-AUTO,4 SPEED	PC7	WHEEL 6.5JX16 ALU	RMR	ROOF RACK-BLACK
K30	CRUISE CONTROL	ML9	TRANSMISSION-AUTO,4SPD,ZF	PG0	WHEEL 6JX16 ALU,SPORTY	RTL	TRIM-TRUNK LID
K70	ALTERNATOR-70A	MM9	TRANS-AUTO,4SPD,4HP16	PG1	WHEEL 6JX15 STEEL	RTS	TRIM-TRUNK,STD
K82	ALTERNATOR-85A	N19	FUEL LID OPENING-CABLE	PG2	WHEEL 6JX16 ALU	RW1	RADIO WAVE-1st TYPE
K90	ALTERNATOR-95A	N31	COVER-STRG COLUMN,RHD TYPE	PG4	WHEEL 5.5JX14 ALU,SPORT	RW2	RADIO WAVE-2nd TYPE
KL7	LP GAS OPERATION	N33	STEERING COLUMN-TILTABLE	PG8	WHEEL 6JX15 ALU,SPORTY	RW3	RADIO WAVE-3rd TYPE
KL9	ALCOHOL OPERATION	N37	STEERING-TILT & TELESCOPIC	PG9	WHEEL 6JX15 ALU	RW4	RADIO WAVE-4th TYPE
KLE	KEYLESS ENTRY SYSTEM	N40	STEERING-POWER	PM1	WHEEL 4.5JX13 STEEL	RWL	LONG WAVE TYPE-CASSETTE
KLP	REMO CON-ENGINE START	N51	STEERING-MANUAL	PM2	WHEEL 5JX13 STEEL	SGS	SEAT BELT-GULF STANDARD
KL7	KEY SUPPLY-DUAL	N55	STEERING-WHEEL W/O SIR	PQ2	WHEEL 5JX13 ALLOY	SKL	SHIFT KNOB-LEATHER
L13	ENGINE-4 CYL 1.3 SOHC MPI	N58	STEERING-WHEEL W/SIR	PQ3	WHEEL 4.5JX13 ALLOY	SU3	SUSPENSION,STD
L14	ENGINE-4 CYL 1.4 DOHC MPI	N59	INTERM SHAFT-RIGID	PS1	PROTECTOR-SIDE	SU4	SUSPENSION,HEAVY
L43	ENGINE-4 CYL 1.5 DOHC MPI	N76	WHEEL 5JX13 - 16 ROUND HL	PX6	WHEEL 51/2JX13-16 ROUND HL	T01	LICENSE LAMP-ON TRUNK,ECE
L44	ENGINE-4 CYL 1.6 DOHC MPI	NEF	NET-FLOOR	PX8	WHEEL 5.5JX14 STEEL	T02	LICENSE LAMP-ON TRUNK,SAE
L76	ENGINE-4 CYL 2.0 SOHC	NET	NET-LUGGAGE	PY4	WHEEL 5.5JX14 ALU,DLX	T11	LICENSE PLATE,SAE/DOMESTIC
L84	ENGINE-4 CYL 1.8 DOHC MPI	NM1	ORVR REQUIREMENT	PZ4	WHEEL 5.5JX14 ALU,STD	T12	LICENSE PLATE,ECE
L88	ENGINE-4 CYL 2.0 DOHC MPI	NN1	EMISSION-EURO,STAGE III	Q97	TIRE-P175/70 R 13	T1P	EMBLEM-GRILLE,GM-DAEWOO
L90	ENGINE-4 CYL 2.2 DOHC MPI	NN2	EMISSION-KOREAN 2000	Q98	TIRE-P185/60 R 14	T26	LAMP-TURN SIGNAL,FRT,ECE
LB1	LABEL-KOREAN	NN3	EMISSION-KOREAN '98	QAF	TIRE-185/65 R 14	T27	LAMP-TURN SIGNAL,FRT,SAE
LB2	LABEL-ENGLISH	NN4	EMISSION-OP/LOOP,LEADED	QQA	TIRE-SPARE,ALLOY WHEEL	T40	LAMP-REAR,ECE W/O FOG LAMP
LB3	LABEL-ARAB	NN6	EMISSION-KOREAN '90	QQI	TIRE-205/55 R 16	T43	SPOILER-REAR,STANDARD
LB4	LABEL-ECE	NN7	EMISSION-EURO,STAGE II	QQM	TIRE-205/65 R 15	T45	SPOILER-REAR,HATCHBACK
LB5	LABEL-SPANISH	NN8	EMISSION-CA TLEV	QQS	TIRE-SPARE,STEEL WHEEL	T46	SPOILER-RR,H/B,SPORTY
LF3	ENGINE-2.0 L6 DOHC MPI	NNA	EMISSION-ECE83,UNLEADED	QQT	TIRE-SPARE,TEMPORARY	T48	AUTO LIGHT CONTROL SYS
LF4	ENGINE-2.5 L6 DOHC MPI	NNB	EMISSION-US83,UNLEADED	QRX	TIRE-195/70 R 14	T5R	LOCKING CONT-SAFETY RR S/B
LQ2	ENG-3 CYL 2V 0.8 SOHC,MPI	NNC	EMISSION-LEV	QSC	TIRE-155/80 R 13	T93	LAMP-C.H.M. STOP
LQ4	ENGINE-4 CYL 1.0 SOHC	NND	EMISSION-ULEV	QTC	TIRE-155/65 R 13	T96	LAMP-FOG,FRONT
LQ5	ENGINE-4 CYL 1.2 SOHC	NNE	EMISSION-INDIA'98,LEADED	QTD	TIRE-145/70 R 13	T97	LAMP-FOG,INTEGRATED IN BPR
LV4	ENGINE-L4 1.8 SOHC,FAM I	NNF	EMISSION-INDIA'98,UNLEADED	QTF	TIRE-155 SR 13	T98	LAMP-FOG,REAR
LV6	ENGINE-4 CYL 1.8 SOHC	NNJ	EMISSION-EURO,STAGE IV	QTI	TIRE-175/60 R 13	TA0	TETHER ANCHORAGE
LX5	ENGINE-4 CYL 1.4 SOHC MPI	NNK	EMISSION-ULEV II	QTJ	TIRE-175/70 R 13-80S	TBS	TIRE BRAND-BRIDGESTONE
LX6	ENGINE-4 CYL 1.5 SOHC MPI	NNP	EMISSION-KLEV	QTL	TIRE-195/55 R 15	TCS	TRACTION CONTROL SYSTEM
M40	TRANSMISSION-AUTO,3 SPEED	NNQ	EMISSION-KTLEV	QTN	TIRE-195/60 R 15	TD0	DOOR TRIM
M45	TRANS-CONTINUOUS VARIABLE	NP5	STEERING WHEEL-LEATHER	QTR	TIRE-185/70 R 14	TD1	DOOR TRIM-STD
M78	TRANSMISSION-MAN,5 VAR 1	OSS	O2 SENSOR STANDARD	QTU	TIRE-175/70 R 14	TD2	DOOR TRIM-DLX
M79	TRANSMISSION-MAN,5 SPEED	P11	FLUSH WHEEL COVER-S/DLX	QUS	TIRE-185/60 R 14-82H	TD4	DOOR TRIM-SUPER DELUXE
M81	TRANS-MAN,5 SPEED,Y4M	P12	FLUSH WHEEL COVER-VAR 1	R83	OCTANE NO.83	TD5	DOOR TRIM-SIDE IMPACT PAD
M85	TRANSMISSION-MAN,5 SPD,M/R	P13	FLUSH WHEEL COVER-HI DLX	R87	OCTANE NO.87	TD6	DOOR TRIM-ULTRA,DELUXE
M89	TRANS-MAN,5 SPD,D20 CR	P21	FLUSH WHEEL COVER-14	R91	OCTANE NO.91	TD8	DOOR TRIM-PART FABRIC DLX
M90	TRANS-MAN,5 SPD,D20 WR	P23	FLUSH WHEEL COVER-13	R95	OCTANE NO.95	TD9	DOOR TRIM-DLX,VAR 1
M95	TRANS-MAN,5 SPD,D20 MR	P2W	FLUSH WHEEL COVER-SPORT	RC2	REMOTE CONTROL S/W-STRG	TDL	DOOR TRIM-LEATHER

## VIII. TABLE OF OPTION CODE

CODE	DESCRIPTION	CODE	DESCRIPTION	CODE	DESCRIPTION	CODE	DESCRIPTION
TFG	LAMP-FOG,PROJECTION	UAK	RADIO-AM/FM STREO,CDP	UW1	POWER MODE TELLTALE	W6Q	TRIM-LEATHER,STD
TLB	TRUNK LID HDL-BODY COLOR	UAV	AV SYSTEM	UW3	FUZZY MODE CONTROL	W6R	TRIM-LEATHER
TLC	TIRE BRAND-LOCAL	UAX	HANDS FREE KIT	UX5	SPEAKER-8EA	W6S	TRIM-CLOTH,S/SPORT VAR 1
TLD	TRUNK LID HDL-Cr COATING	UB0	AUDIBLE WARNING CHIME	UXA	SPEED SENSITIVE PWR STRG	W6T	TRIM-CLOTH,LUX,STD
TM4	BATTERY-45AH,LOW	UB4	WARNING BUZZER-HEADLAMP	UZ4	KEY REMINDER	W6V	TRIM-CLOTH,FLOCKING
TMS	BATTERY SAVER	UB8	WARNING SYSTEM-VOICE	UZ9	KEY INTERLOCK SYSTEM	W6W	TRIM-CLOTH,STANDARD,VAR 1
TN6	BATTERY-55AH	UBD	ANALOG CLUSTER-DLX	V17	GRILLE-RADIATOR,CR COATING	W6X	TRIM-CLOTH,DELUXE,VAR 2
TNA	BATTERY-35AH	UBE	ANALOG CLUSTER-EL TYPE	V20	GRILLE-RADIATOR,BODY COLOR	W8K	CD PLAYER-DLX
TNH	BATTERY-55AH,HIGH	UBF	ANALOG CLUSTER-EL,MILES	V22	RAD GRILLE-LATTICE TYPE	W8M	CD PLAYER-W/MP3
TR1	LAMP-REAR COMB,SPORTY	UBS	ANALOG CLUSTER-STD	V25	RAD GRILLE-LATTICE TYPE,CR	W8N	CD CHANGER-IN DASH 5
TR2	LAMP-REAR COMB,STD	UC0	SPEEDOMETER-KILOMETERS	V86	FIRE EXTINGUISHER	W8R	CASSETTE-EQUALIZER,HI DLX
TR3	LAMP-REAR COMB,KOREA	UC1	SPEEDOMETER-MILES	V87	FIRE EXTINGUISHER-ASM	W8S	EQUALIZER-CASSETTE
TR8	LAMP-REAR COMB,DELUXE	UE1	GRAPHIC EQUALIZER	VA5	RADIATOR-STD	W8V	CD PLAYER
TRA	LAMP-REAR,ECE W/FOG LAMP	UE2	GRAPHIC EQUALIZER-STD	VA6	RADIATOR-HEAVY DUTY	W9M	WHEEL-BLACK
TVM	TELEVISION SYSTEM	UF6	DIMMER-INSTRUMENT CLUSTER	VB1	BUMPER-MOLDED COLOR	W9U	WHEEL-SILVER
U04	HORN-SINGLE	UIP	ULTRA INTERIOR PROTECTION	VB2	BUMPER-BODY COLOR	WC4	MUFFLER-STANDARD
U05	HORN-DUAL	UL1	JACK-EXTRA POWER,CONSOLE	VB4	GULF STATES-MANDATORY	WC6	MUFFLER-HEAVY DUTY
U07	HORN-FANFARE	UM1	IMMOBILIZER	VB5	BUMPER-BODY COLOR,VAR 1	WCC	CD CHANGER
U12	BRAKE T/M SHIFT INTERLOCK	UM2	CASSETTE-LW/AM/FM,RDS,DTCH	VC1	EMBLEM-CHEVROLET	WGD	WOOD GRAIN-DELUXE
U14	CLOCK-DIGITAL,INSTRUMENT	UN1	CASSETTE-AM/FM STO ETR,STD	VH4	MUD GUARD-FRT & RR	WGL	INST PANEL-WOOD GRAIN
U17	WARNING-DOOR OPEN	UN2	CASSETTE-AM/FM STO ETR,DLX	VT0	BUMPER-2.5M,VAR1	WGM	INST PANEL-METALLIC COLOR
U19	LAMP-DOOR COURTESY,FRT	UN6	CASSETTE-AM/FM STO ETR,H/D	VT1	BUMPER-5 MPH	WGP	METALLIC PAINT
U25	LAMP-LUGGAGE COMPARTMENT	UN8	BLANK COVER-AUDIO	VT2	BUMPER-2.5 MPH	WGR	WOOD GRAIN
U27	LAMP-GLOVE BOX	UNA	CASSETTE-AM/FM ST ETR,BASE	VT3	BUMPER-FRT 5MPH,RR 2.5MPH	WGS	METALLIC GRAIN
U32	CLOCK-DIGITAL,I/P	UNB	BLANK-AUDIO,W/FRAME	VT5	BUMPER-PLASTIC,COLOR KEYED	WL6	LETTERING & EMBLEM-EX
U39	INSTRUMENT-SPD TACHO,DLX	UNG	BLANK COVER-AUDIO,W/FRAME	VT8	BUMPER-ACCENT COLOR	WM4	NAME-MATIZ
U44	SPEED WARNING DEVICE	UNH	CASSETTE-EQUALIZER,STD	VT9	BUMPER-FRT 5M,RR 2.5M,VAR1	WM5	NAME-SPARK
U47	NEUTRAL STARTER-CLUTCH	UP0	DEPOSIT BOX-I/P,LID TYPE	W11	NO. OF PASSENGER-7	WP5	LETTERING-SL
U51	INDICATOR-HAZARD LAMP	UP1	CD CHANGER SYSTEM	W2Q	LETTERING-MAX	WP6	LETTERING-VL
U58	RADIO-AM/FM STEREO	UPK	RADIO-ETR,EQU,CD,MP3,S/DIN	W2R	LETTERING-PRESTIGE	WP7	LETTERING-VG
U61	INDICATOR-DOOR OPEN	UR7	ASHTRAY	W3R	LETTERING-LUXURY	WP8	LETTERING-LS
U63	DISPLYER-OUTSIDE TEMP	UR8	ASHTRAY-W/LAMP	W3S	LETTERING-SX	WP9	LETTERING-LD
U67	INDICATOR-DAYTIME R/LIGHT	US0	SPEAKER,RR-DLX	W3T	LETTERING-CDX	WPA	LETTERING-DAEWO
U72	ANTENNA-DIVERSITY	US5	SPEAKER,TWEETER	W4L	LETTERING-CD	WPN	LETTERING-CHEVROLET
U73	ANTENNA-ROD	US6	SPEAKER,FRT-STD	W4M	LETTERING-D' ART	WPP	LETTERING-LP
U75	ANTENNA-POWER	US7	SPEAKER,FRT-DLX	W4V	LETTERING-SE	WPS	LETTERING-SPECIAL
U77	ANTENNA-MAST	US8	SPEAKER,RR-STD	W6C	TRIM-CLOTH,STANDARD	WQ1	LETTERING-EAGLE,GOLD
U83	SPEAKER-COAXIAL 2 WAY	UT3	ANTENNA-BACK GLASS	W6E	TRIM-CLOTH,DELUXE	WQW	LETTERING-CLASSIC,GOLD
U85	CLOCK-DIGITAL W/TEMP.DSPLY	UT4	ANTENNA,REAR-MANUAL	W6G	TRIM-CLOTH,SUPER DELUXE	WQX	LETTERING-CLASSIC,CR
U86	CLOCK-DIGITAL W/O D BUTTON	UT5	ANTENNA,REAR-POWER	W6H	TRIM-CLOTH,ULTRA DELUXE	WQY	LETTERING-EAGLE,CR
U90	SPEAKER-4EA	UT8	ANTENNA-ROOF	W6K	TRIM-VINYL	WR1	NAME-REZZO
U93	SPEAKER-6EA	UT9	ANTENNA-ROOF,SHORT	W6L	TRIM-CLOTH,DELUXE,VAR 3	WR2	NAME-TACUMA
UA9	HORN-80,NON E-MARK	UV7	AMP-POWER	W6N	TRIM-CLOTH,DELUXE,VAR 1	X1A	PACKAGE-SALES TOP 1

## VIII. TABLE OF OPTION CODE

CODE	DESCRIPTION	CODE	DESCRIPTION	CODE	DESCRIPTION
X81	PACKAGE-A	XLA	LATIN AMERICA-MANDATORY	ZH5	TRIM LEVEL #5
X82	PACKAGE-B	XLB	LEBANON-MANDATORY	D6R	CLUSTER HOUSING-METAL PNT
X86	PACKAGE-COLOR	XLD	DRIVING LICENSE PACKAGE	A03	WINDSHIELD-2 PIECE,CLEAR
X87	PACKAGE-F	XLH	LITHUANIA-MANDATORY	AQC	SEAT-FRONT,CUSTOM
XA1	SOUTH AFRICA-MANDATORY	XLP	LEATHER PACKAGE	221	PURPLE-INTERIOR
XAF	AFRICA-MANDATORY	XLQ	NVH REDUCTION ITEMS		
XAL	ALGERIA-MANDATORY	XLV	LATVIA-MANDATORY		
XAR	AUSTRIA-MANDATORY	XM2	LUMBAR SUPPORT-DRIVER SEAT		
XAT	AUSTRALIA-MANDATORY	XM3	LUMBAR SUPPORT-CO DR,SEAT		
XBR	BRAZIL-MANDATORY	XME	MANDATORY-MEXICO		
XBT	PACKAGE-BEST	XML	IMPEDIMENT LEFT HAND		
XBX	BENELUX-MANDATORY	XMP	IMPEDIMENT HANDLE KIT		
XCA	EQUIPMENT-COLD AREA	XMR	IMPEDIMENT LEFT ACCEL KIT		
XCE	CHILE-MANDATORY	XMS	IMPEDIMENT STRG KIT		
XCH	CHINA-MANDATORY	XND	INDIA-MANDATORY		
XCI	C.I.S-MANDATORY	XNZ	NEW ZEALAND-MANDATORY		
XCK	STD CORROSION SPEC	XP1	TAXI VAR 1-S/BOARD & METER		
XCO	COLOMBIA-MANDATORY	XPH	PHILIPPINE-MANDATORY		
XCP	HEAVY DUTY CORROSION SPEC	XPK	PAKISTAN-MANDATORY		
XCR	CROATIA-MANDATORY	XPL	POLAND-MANDATORY		
XD	EMS SYSTEM-DELPHI	XPR	PUERTO RICO-MANDATORY		
XEC	CZECHO-MANDATORY	XRA	ISRAEL-MANDATORY		
XED	ECUADOR-MANDATORY	XRU	RUSSIA-MANDATORY		
XEE	EQUIPMENT-EAST EUROPE	XSM	EMS SYSTEM-SIEMENS		
XEG	EGYPT-MANDATORY	XSN	SPAIN-MANDATORY		
XEP	E-MODEL PACKAGE	XSP	STYLE PACKAGE		
XES	ESTONIA-MANDATORY	XSQ	SPORT PACKAGE,VAR 1		
XFR	FRANCE-MANDATORY	XST	SPORT PACKAGE		
XG0	ADD.BRAKE PEDAL	XSW	SWITZERLAND-MANDATORY		
XG1	ADD.BRAKE & CLUTCH PEDAL	XSY	SYRIA-MANDATORY		
XG2	EQUIPMENT-ROAD TRAINING	XTL	THAILAND-MANDATORY		
XG7	PACKAGE-PATROL CAR	XUK	U.K-MANDATORY		
XGU	GUAM-MANDATORY	XUR	UKRAINE-MANDATORY		
XHA	EQUIPMENT-HOT AREA	XVN	VAN PACKAGE		
XJ6	JAPAN-MANDATORY	XWE	EQUIPMENT-WEST EUROPE		
XK0	CHILD SEAT BELT PROVISION	XWS	WESTERN SAMOA-MANDATORY		
XKA	BADGE-CHEVROLET	XY1	BUY BACK-INDIA PLANT		
XKB	BADGE-PONTIAC	XYM	YEMEN-MANDATORY		
XKC	BADGE-DAEWOO	Y99	SALES HANDLING PACKAGE		
XKD	BADGE-SUZUKI	ZH1	TRIM LEVEL #1		
XKE	BADGE-BUICK	ZH2	TRIM LEVEL #2		
XKP	PACKAGE-KOREA ELEC POWER	ZH3	TRIM LEVEL #3		
XL5	TAIWAN-MANDATORY	ZH4	TRIM LEVEL #4		

## IX. ABBREVIATIONS

CODE	DESCRIPTION	CODE	DESCRIPTION	CODE	DESCRIPTION
1ST	FIRST	EXPN	EXPANSION	RAD	RADIATOR
2ND	SECOND	EXTN	EXTENSION	RECL	RECLINER,-ING
3RD	THIRD	F/PNL	FLOOR PANEL	REF	REFRIGERANT
A	ASSEMBLY	FDG	FEEDING	REINF	REINFORCEMENT
A/C	AIR CONDITIONER, -ING	FLR	FLOOR	REV	REVERSE
A/T	AUTO TRANSMISSION	FRT	FRONT	RKE	REMOTE KEY(ENTRY SYSTEM)
ABS	ANTI LOCK BRAKE SYSTEM	FWD	FORWARD	RR	REAR
ACCEL	ACCELERATOR	G/S	GEAR SHIFT	RTN	RETURN
AL	ALUMINIUM	HARN	HARNES	S/ABS	SHOCK ABSORBER
ATAS	ANTI THEFT ALARM SYSTEM	HYD	HYDRAULIC	S/BACK	SEAT BACK
ATC	AUTO TEMPERATURE CONTROL	I/MANIF	INTAKE MANIFOLD	S/BELT	SEAT BELT
AUX	AUXILIARY	I/P	INSTRUMENT PANEL	S/COL	STEERING COLUMN
BTSI	BRAKE TRANSMISSION SHIFT INTERLOCK	I/S	INSIDE	S/W	SWITCH
C/G	CROSS GROOVE	IACV	IDLE AIR CONTROL VALVE	SDM	SENSING & DIAGNOSTIC MODULE
C/MBR	CROSS MEMBER	IGN	IGNITION	SECD	SECONDARY
C/V	CONSTANT VELOCITY	INCL	INCLUDING	SHF	SHAFT
CATAL CONV	CATALYTIC CONVERTER	INL	INLET	SIR	SUPPLEMENTAL INFLATE RESTRAINT
CD	COMPACT DISC	INR	INNER	SOL	SOLENOID
CLU	CLUTCH	INST	INSTRUMENT	STD	STANDARD
CM/SHF	CAM SHAFT	INT	INTAKE	STRG	STEERING
CMPR	COMPRESSOR,-SION	INTER	INTERMEDIATE	SUCT	SUCTION
CNSL	CONSOLE	L/COMPT	LOAD COMPARTMENT	SUPT	SUPPORT,-ING
COMB	COMBINATION	L/PLATE	LICENSE PLATE	SYN	SYNCHRONIZER
COMPL	COMPLETE	LONGI	LONGITUDINAL	T/A	TRANSAXLE
COMPT	COMPARTMENT	LWR	LOWER	T/BODY	THROTTLE BODY
CONN	CONNECTING,-TOR,-NECT	M/T	MANUAL TRANSMISSION	T/GATE	TAIL GATE
CONT	CONTROL	MANIF	MANIFOLD	T/LID	TRUNK LID
CONV	CONVERTER	MAP	MANIFOLD AIR PRESSURE	T/M	TRANSMISSION
CPS	CRANK POSITION SENSOR	MAT	MANIFOLD AIR TEMPERATURE	T/P	TRI POT
CR/SHF	CRANK SHAFT	MBR	MEMBER	T/SIG	TURN SIGNAL
CTR	CENTER, -RAL	MOD	MODULE	TCC	TORQUE CONVERTER CLUTCH
CUSH	CUSHION	MT	MOUNTED,-ING	TCM	TRANSMISSION CONTROL MODULE
CYL	CYLINDER	NEU	NEUTRAL	TEMP	TEMPERATURE
DIFF	DIFFERENTIAL	NSBU	NEUTRAL START BRAKE UNIT	THER	THERMAL
DIR	DIRECT,-TION	O/S	OUTSIDE,OVERSIZE	TILT	TILTABLE
DIS	DIRECT IGNITION SYSTEM	OBD	ON BOARD DIAGNOSTIC	TRK	TRUNK
DISTR	DISTRIBUTOR,-TION	OPG	OPENING	TXV	THERMAL EXPANSION VALVE
DLX	DELUXE	OTLT	OUTLET	U/S	UNDER SIZE
DMP	DAMPING,-PER	OTR	OUTER	UPR	UPPER
DR	DOOR	P/BRAKE	PARKING BRAKE	VENT	VENTILATED,TION,-TOR
DRL	DAY TIME RUNNIN LIGHT	P/STRG	POWER STEERING	VGIS	VARIABLE GAS INDUCTION SYSTEM
E/MANIF	EXHAUST MANIFOLD	P/WDO	POWER WINDOW	W/	WITH
ECM	ELECTRONIC CONTROL MODULE	PARK	PARKING	W/H	WHEEL HOUSE
ECU	ELECTRONIC CONTROL UNIT	PASS	PASSENGER	W/HARNES	WIRING HARNESS
EGR	EXHAUST GAS RECIRCULATION	PCB	PRINTED CIRCUIT BOARD	W/SHIELD	WINDSHIELD
ELEC	ELECTRIC,-CAL	PNL	PANEL	W/STRIP	WEATHER STRIP
ENG	ENGINE	PRIM	PRIMARY	WDO	WINDOW
ENGY	ENERGY	PROTV	PROTECTIVE	W/O	WITHOUT
EXH	EXHAUST	PWR	POWER		